

FOR
SALE



26 St Davids Close, Worksop, Nottinghamshire S81 0RP

£130,000 - Freehold



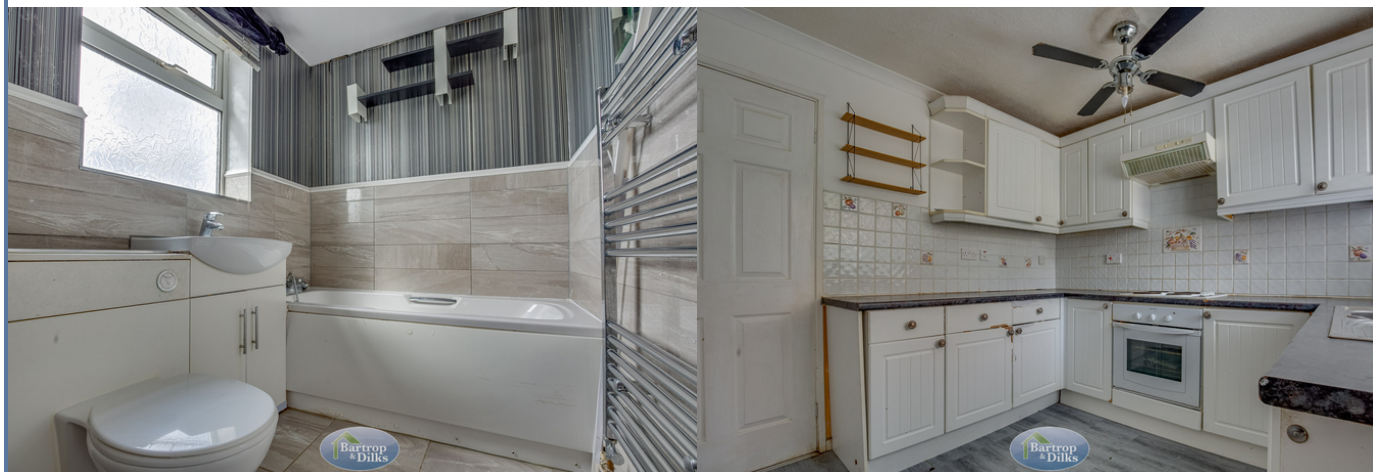
78, Bridge Street, Worksop, S80 1JA 01909 509001 info@bartropanddilks.co.uk

PROPERTY SUMMARY

Offered for sale with no chain being involved with an early viewing being highly advised is this three bedroom semi detached home that has gas central heating and uPVC double glazed windows. Of interest for first time buyers or investors, the property is within walking distance of local amenities with the accommodation comprising of; entrance hallway, shower room, lounge, dining room, kitchen, rear lobby/Utility. On the first floor; landing, three bedrooms and bathroom. Outside; gardens to the front and rear.

POINTS OF INTEREST

- *Of Interest First Time Buyers*
- *No Chain Involved*
- *Close To All Amenities*
- *Three Bedroom*
- *Semi Detached*
- *Gas Central Heating*
- *uPVC Double Glazed*
- *Front & Rear Gardens*
- *Sought After Area*
- *Viewing Highly Advised*



ROOM DESCRIPTIONS

Ground Floor

Entrance Hallway

With entrance door, stairs to the first floor, central heating radiator.

Shower Room

With a shower cubicle and electric shower unit, low flush w.c, front facing window.

Lounge 4.12m x 3.80m (13' 6" x 12' 6")

With two front facing windows, central heating radiator, fire surround and fire.

Dining Room 3.51m x 2.38m (11' 6" x 7' 10")

With two rear facing windows, central heating radiator.

Kitchen 3.03m x 2.80m (9' 11" x 9' 2")

With wall and base fitted units, worksurfaces, electric hob, oven and extractor, sink unit with mixer tap, central heating radiator, rear window, door to the porch/utility.

Rear Lobby/Utility 2.08m x 1.91m (6' 10" x 6' 3")

Rear door, plumbing for an washing machine.

First Floor

Landing

With storage cupboard, loft access.

Bedroom One 3.58m x 3.21m (11' 9" x 10' 6")

With two front facing windows, central heating radiator.

Bedroom Two 3.53m x 3.43m (11' 7" x 11' 3")

With two rear facing windows, central heating radiator.

Bedroom Three 3.07m x 2.84m (10' 1" x 9' 4")

With a rear facing window, central heating radiator.

Bathroom

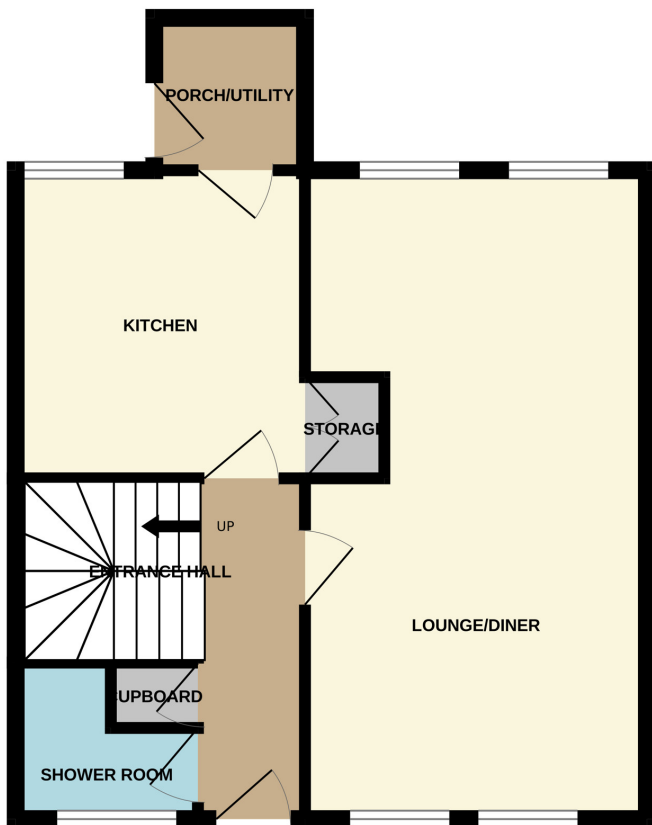
White suite that comprises of; panelled bath, wash hand basin with vanity unit, low flush w.c, heated towel rail, tiling to splashback., front facing window.

Outside

Gardens

Front and rear gardens.

GROUND FLOOR



1ST FLOOR

