



11 Jameson Road, Bexhill-on-Sea, East Sussex,  
TN40 1EG

£599,950



- Substantial Semi-Detached Character House For Sale
- Five Double Bedrooms & Three Offices/Studies
- Modern Fitted Kitchen With Integrated Appliances
- Ground Floor WC & Utility Room
- Bay Windows & Feature Fireplaces
- Private Rear Garden
- Off-Road Parking
- Sold With No Onward Chain
- Close To Seafront & Train Station
- Excellent Recently Refurbished Condition Throughout
- Sought After Central Location
- Viewing Highly Recommended

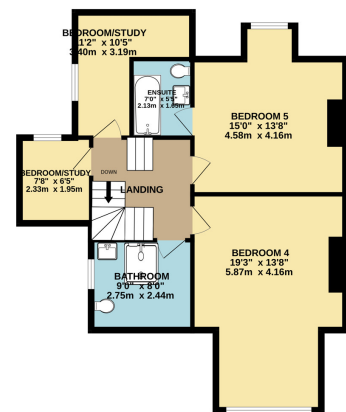
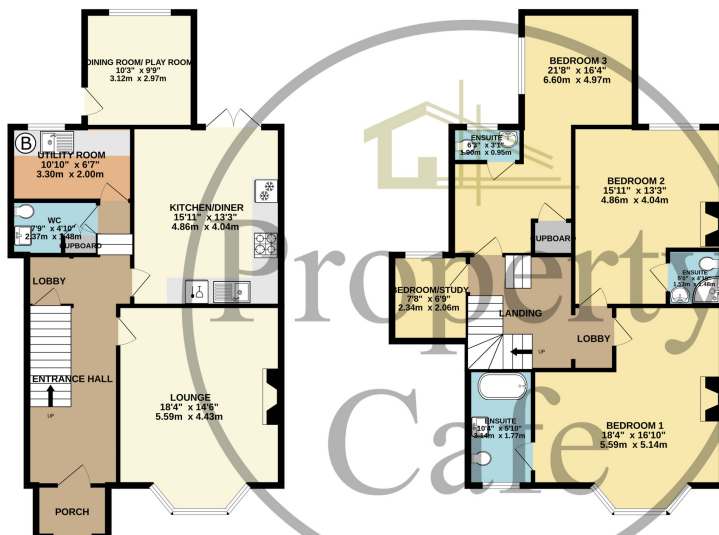
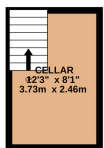


000-01 FLOOR  
19.000.000 (19.000 sq.m.) approx.

000-02 FLOOR  
879.000.000 (879.000 sq.m.) approx.

000-03 FLOOR  
889.000.000 (889.000 sq.m.) approx.

000-04 FLOOR  
719.000.000 (719.000 sq.m.) approx.



TOTAL FLOOR AREA : 2594 sq.ft. (241.0 sq.m.) approx.

Whilst every attempt has been made to ensure the accuracy of the floorplan contained here, measurements of doors, windows, rooms and any other items are approximate and no responsibility is taken for any error, omission or mis-statement. This plan is for illustrative purposes only and should be used as such by any prospective purchaser. The services, systems and appliances shown have not been tested and no guarantee as to their operability or efficiency can be given.

Made with Metroplex ©2024