

FOR SALE

£300,000

Selhurst Road, London, SE25



A well presented share of freehold two bedroom ground floor apartment with its own private entrance and direct access to a large private garden and off street parking. Located just minutes between both Norwood Junction and Selhurst BR/Overground stations.

A wonderful two bedroom property in excellent condition throughout and with its own private entrance.

Comprising of a separate lounge with wooden floors, a modern bathroom suite, a contemporary fitted kitchen with integrated appliances and access to a recently renovated garden offering ample space. The property also benefits from off street parking, double glazing, a combi boiler and built in wardrobes in the master bedroom which overlooks the garden.

This property offers easy access into The City due its close proximity between Norwood Junction and Selhurst stations. Ideally suited for commuters, trains departing from Norwood Junction will transport you into The City, including both Victoria and a direct connection into London Bridge stations.

- Share of Freehold
- Two bedrooms
- Private entrance
- Private large garden
- Modern kitchen
- Modern bathroom
- Off street parking
- Close to Norwood J & Selhurst stations

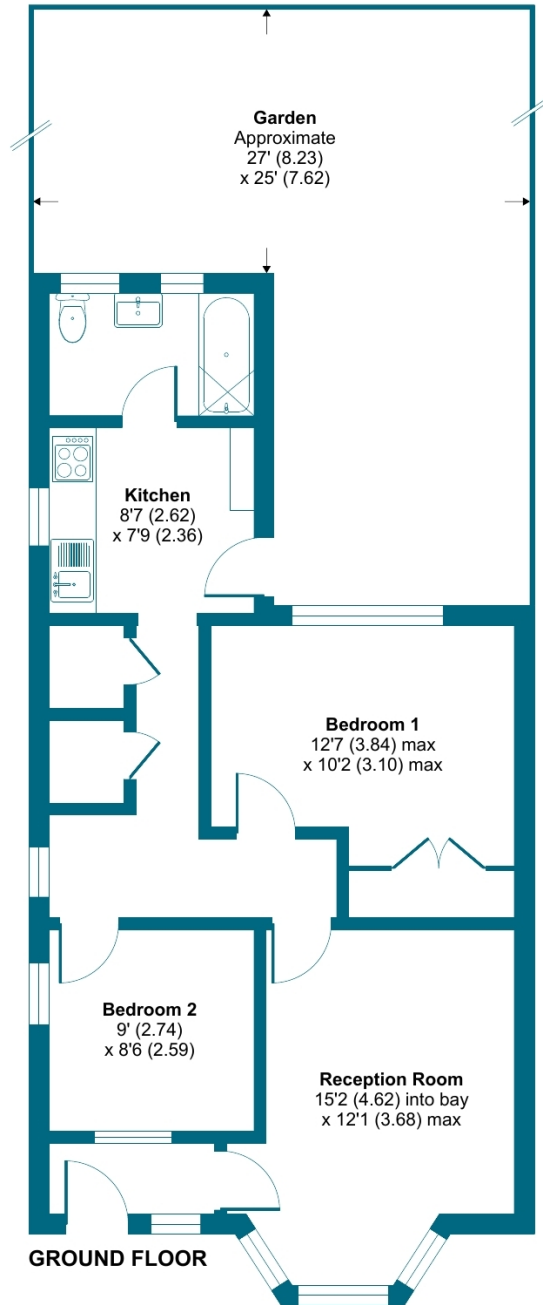




Selhurst Road, London, SE25

Approximate Area = 628 sq ft / 58.3 sq m

For identification only - Not to scale



Floor plan produced in accordance with RICS Property Measurement Standards incorporating International Property Measurement Standards (IPMS2 Residential). © nchecon 2024. Produced for Grafton Estate Agents. REF: 1116529

