

SOLD



Stapleton Close, Potters Bar, Hertfordshire, EN6

£425,000

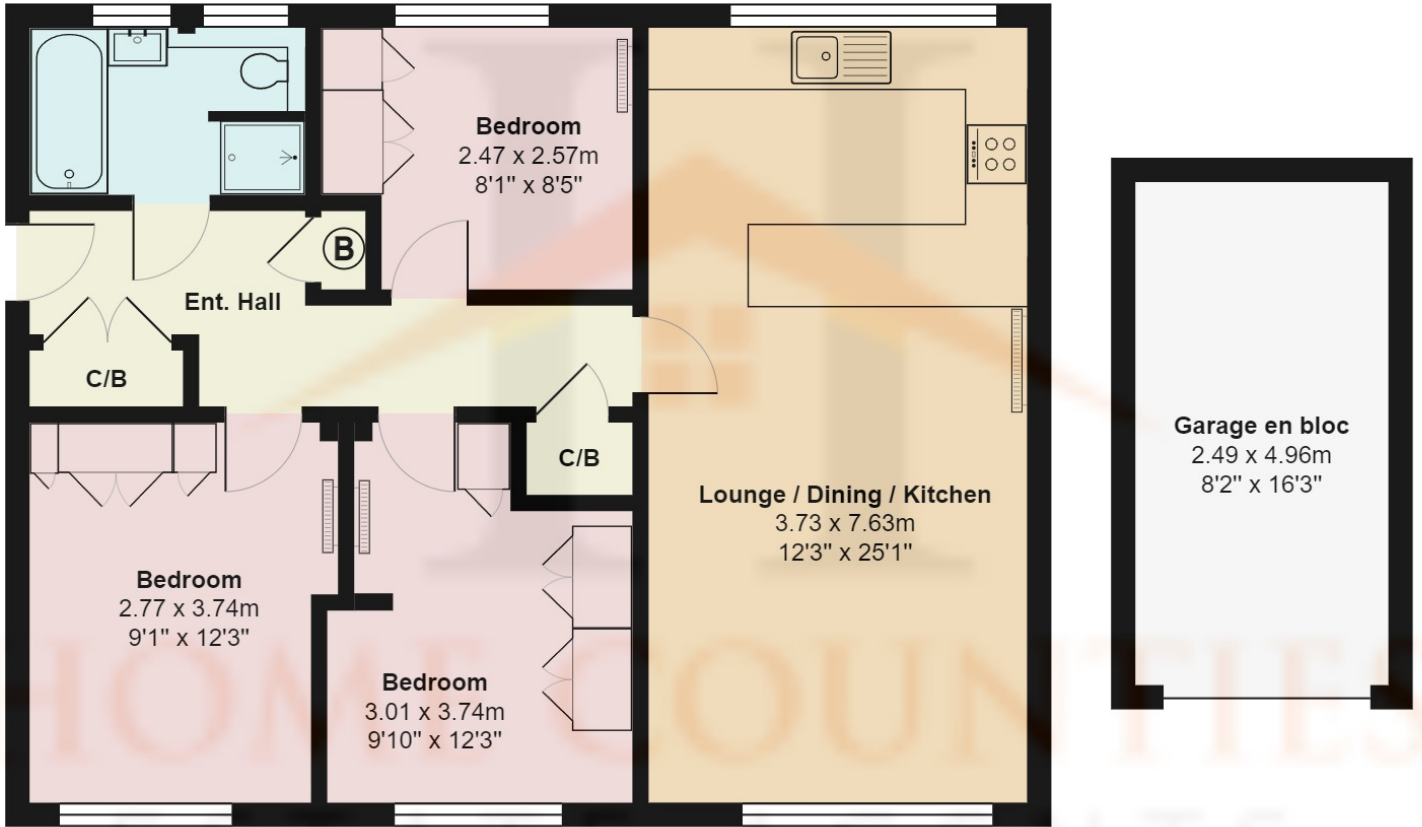
- **THREE BEDROOM APARTMENT**
- **GARAGE**
- **SHARE OF FREEHOLD**
- **EXCELLENT DECORATIVE ORDER THROUGHOUT**
- **COMMUNAL GARDENS**
- **PRIVATE BLOCK**
- **OPEN PLAN KITCHEN / DINING ROOM / LOUNGE**
- **PRIVATE PARKING**
- **WALKING DISTANCE TO POTTERS BAR HIGH STREET**

Stapleton Close, Potters Bar, Hertfordshire, . EN6

£425,000 Leasehold

This stunning three bedroom first floor flat is ideally located just off of the Causeway in this rarely available private block. The property has been recently refurbished to a high standard throughout, and benefits from open plan living with modern fitted kitchen, modern family bathroom, two double bedrooms and a single bedroom with fitted wardrobes

Externally the property features communal gardens, secured entrance, CCTV, allocated parking and garage.



First Floor

Stapleton Close, Hertfordshire EN6

Total Area: 87.4 m² ... 941 ft²

All measurements are approximate and for display purposes only

