



Campbell Close

Hitchin,
Hertfordshire, SG4 0RH
Guide Price £250,000

country
properties

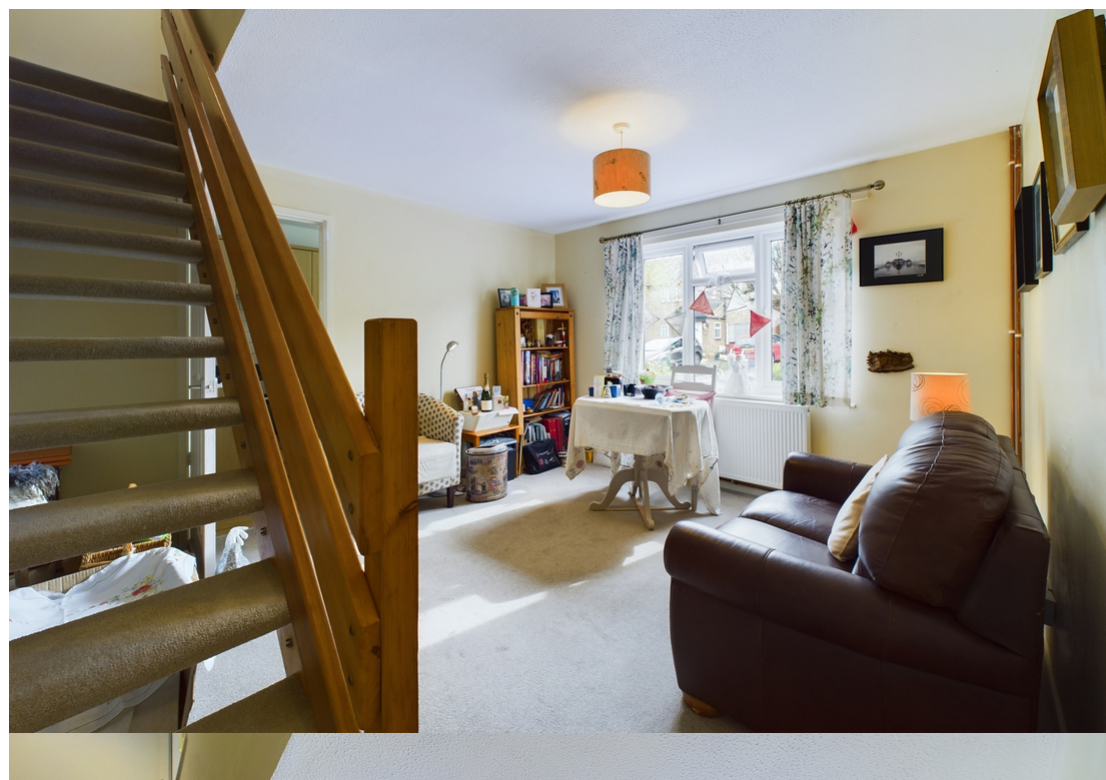
Offered with no onward chain, this one bedroom cluster home is located within a quiet cul-de-sac location. The ground floor accommodation comprises entrance porch, living room with stairs leading to the first floor and separate kitchen. To the first floor is a hallway with storage cupboard, double bedroom and bathroom with W.C, wash hand basin and bath with shower attachment.

To the outside is a front garden laid to lawn and parking space for 2 vehicles.

Hitchin is a charming medieval market town and has many fine Tudor and Georgian buildings, particularly around the market square. Near to the market square stands the large medieval parish church of St Mary. The town provides good shopping as well as a swimming pool, football team, two theatres, a wide variety of restaurants and pubs and highly regarded girls and boys schools. There is also a mainline railway station providing direct access to Kings Cross and Cambridge.

- One bedroom house
- Cul de sac location
- Front garden
- Two parking spaces
- No Chain
- 0.6 miles, 15 mins walk to Hitchin train station (as per Google maps)
- 1.2 miles, 26 mins walk to Hitchin town centre (as per Google maps)







All measurements are approximate and quoted in metric with imperial equivalents and for general guidance only and whilst every attempt has been made to ensure accuracy, they must not be relied on. The fixtures, fittings and appliances referred to have not been tested and therefore no guarantee can be given and that they are in working order. Internal photographs are reproduced for general information and it must not be inferred that any item shown is included with the property. For a free valuation, contact the numbers listed on the brochure.

Viewing by appointment only

Country Properties | 6, Brand Street | SG5 1HX
 T: 01462 452951 | E: hitchin@country-properties.co.uk
 www.country-properties.co.uk

country
properties