



Day & Co
ESTATE AGENTS

28 Cavendish Street
Keighley
BD21 3RG



Thorn Bank, Calton Road, Long
Lee, Keighley, West Yorkshire,
BD214UT

£285,000

T: 01535 664609

W: www.dayandcoestateagents.co.uk

E: keighley@dayandcoestateagents.co.uk

- SEMI-DETACHED FAMILY HOUSE
- TWO RECEPTION ROOMS
- PLEASANT GARDENS, DRIVEWAY

- FOUR BEDROOMS
- LARGE CONSERVATORY
- EPC Rating D

SUMMARY

* STONE SEMI-DETACHED HOUSE, FOUR BEDROOMS, TWO BATHROOMS, LARGE CONSERVATORY, BASEMENT ROOMS, PLEASANT GARDENS, OFF ROAD PARKING, INTERNAL VIEWING ADVISED, EPC RATING D **

FULL DESCRIPTION

An ideal purchase for the growing family is this four bedroom mature semi-detached family home, situated in the popular residential location of Long Lee with a pleasant rear garden well worthy of a viewing and a driveway to the side. This property is handily placed for access to the local primary school and has accommodation briefly comprising.

Ground Floor - Entrance porch, spacious lounge with window to the front and wood burning stove, spacious dining kitchen with a range of fitted wall and base units, island, window and door to the rear, large conservatory with doors leading to the garden and door leading to a w.c..

Basement with room to the front with small window, store room, utility, w.c.

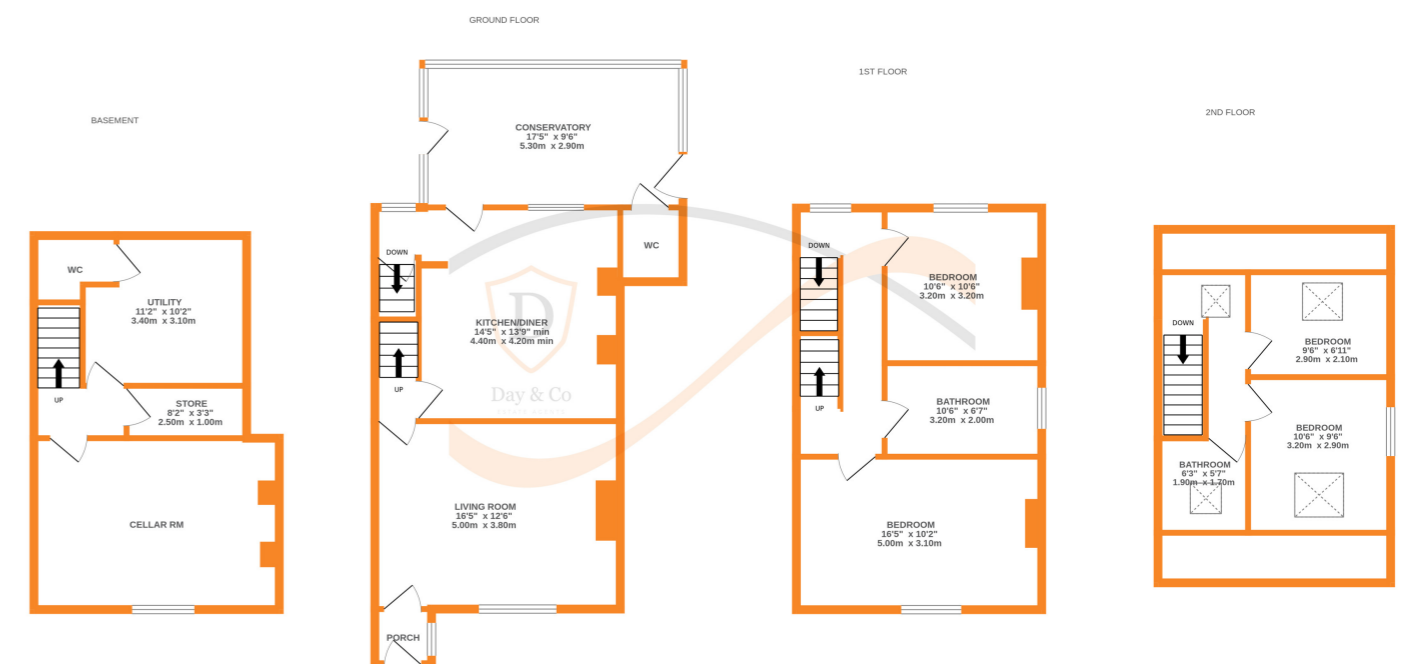
First floor - Landing, two bedrooms and the house bathroom comprising of a roll top bath, shower cubicle, w.c., wash basin and side window.

Upper Floor - Two bedrooms and completing the accommodation is a second bathroom comprising of a bath, wc., wash basin and roof window.

Gas central heating, double glazing.

Outside - Front garden, driveway to side providing parking. The rear garden which is a good size must be viewed to be fully appreciated with lawn and patio deck areas, shed and water feature.

EPC Rating D



Whilst every attempt has been made to ensure the accuracy of the floorplan contained here, measurements of doors, windows, rooms and any other items are approximate and no responsibility is taken for any error, omission or mis-statement. This plan is for illustrative purposes only and should be used as such by any prospective purchaser. The services, systems and appliances shown have not been tested and no guarantee as to their operability or efficiency can be given.
Made with Metropix ©2024