

28 Scads Hill Close, Orpington, Kent, BR6 0EB

Property Images



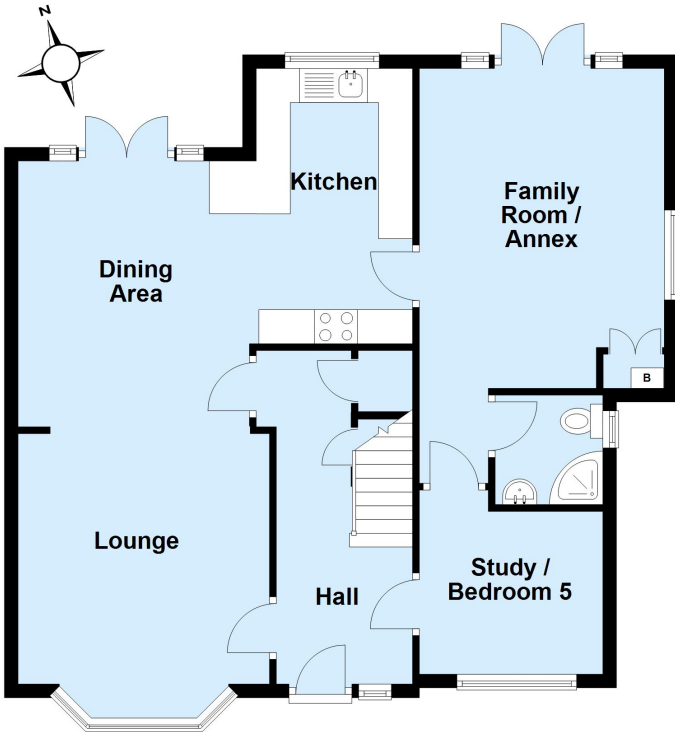






Ground Floor

Approx. 77.1 sq. metres (829.5 sq. feet)



First Floor

Approx. 77.7 sq. metres (836.8 sq. feet)



Total area: approx. 154.8 sq. metres (1666.3 sq. feet)

This plan is for general layout guidance and may not be to scale.
Plan produced using PlanUp.