



Martell Drive, Kempston, Bedford MK42 7FJ

WALDENS ESTATE AGENTS



Martell Drive
Kempston
Bedford
MK42 7FJ

Offers in Excess of
£220,000

Modern built two double bedroom ground floor apartment in immaculate order with fully fitted kitchen with integrated appliances. En-suite to the main bedroom, close to Primary School and amenities. Perfect for the commuter with A421 and A6 within minutes, linking to the A1 & M1.

- Immaculate 2 bedroom ground floor apartment
- Ensuite to main bedroom
- Fully fitted kitchen with appliances
- Walking distance to amenities & primary school
- No onward chain

- Council Tax Band B
- Energy Efficiency Rating

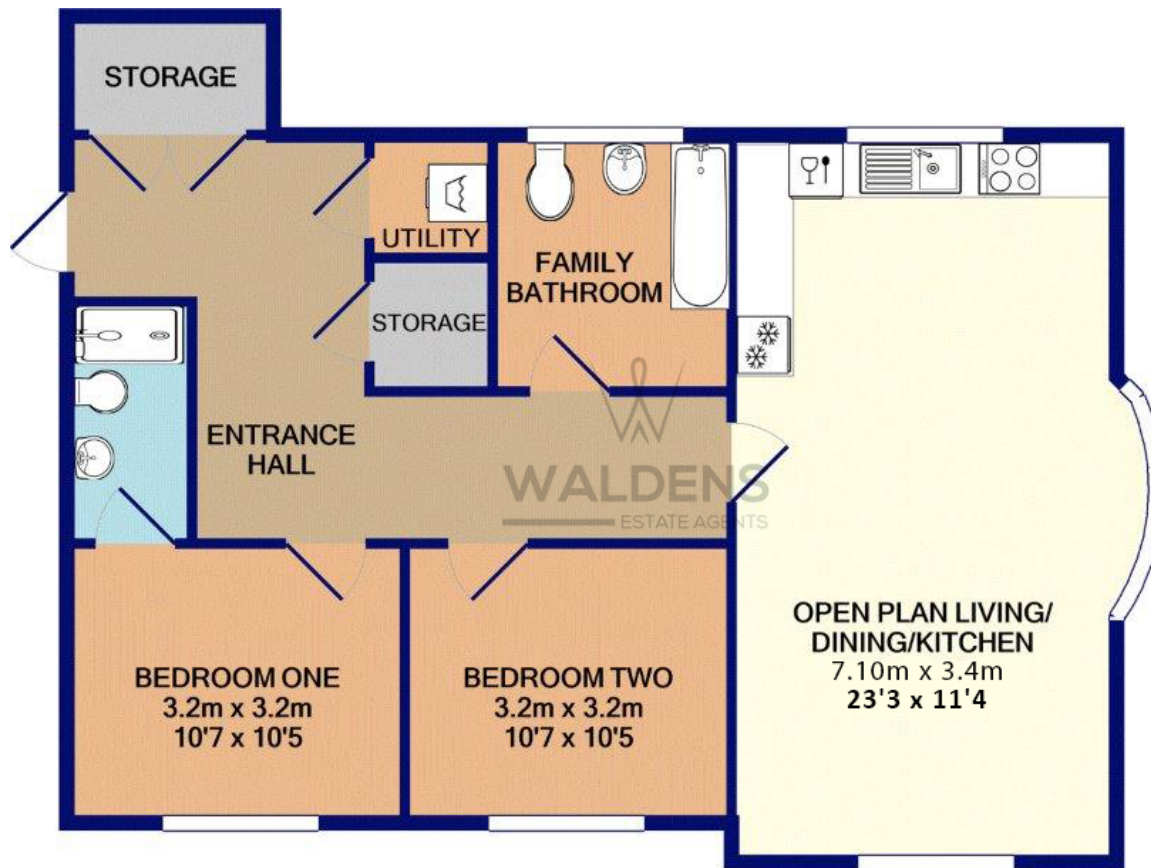




Located on the edge of the popular 'Orchid Fields' development we have for sale this two double bedroom ground floor apartment. Entrance to the apartment is through the well maintained communal entrance area with its secure entrance phone system. Entering the apartment you have a sizeable hall with storage cupboards and a utility cupboard housing the washing machine. Open plan living/kitchen area which comes with integrated appliances. The main bedroom has a sizeable en-suite shower room with a further double bedroom and bathroom. Outside is allocated parking plus the benefit of visitors parking. Small communal green area.

We are advised by the current seller the service charge is approx £900 per year and the Ground Rent is approx £217 per year. Lease length to be confirmed. Please get your legal representative to check all charges and lease details.





Whilst every attempt has been made to ensure the accuracy of the floorplan contained here, measurements of windows, doors, rooms and any other items are approximate and no responsibility is taken for any error, omission or mis-statement.

This plan is for illustrative purposes only and should be used as such by any prospective purchaser.

01234 856684 | sales@waldens.co.uk | www.waldens.co.uk | 188-190 Bedford Road, Bedford, MK42 8BL

The information contained in the property details are designed to help you decide whether you would like to view the property and to avoid wasting your time in viewing unsuitable properties. We endeavour to ensure accurate information is detailed, but we are largely guided by information supplied to us by the seller. We are unable to check all aspects of the property as this would be prohibitive. Some of the photographs are taken using a wide- angled lens. Where a floor plan has been provided, this is for guidance purposes only.

