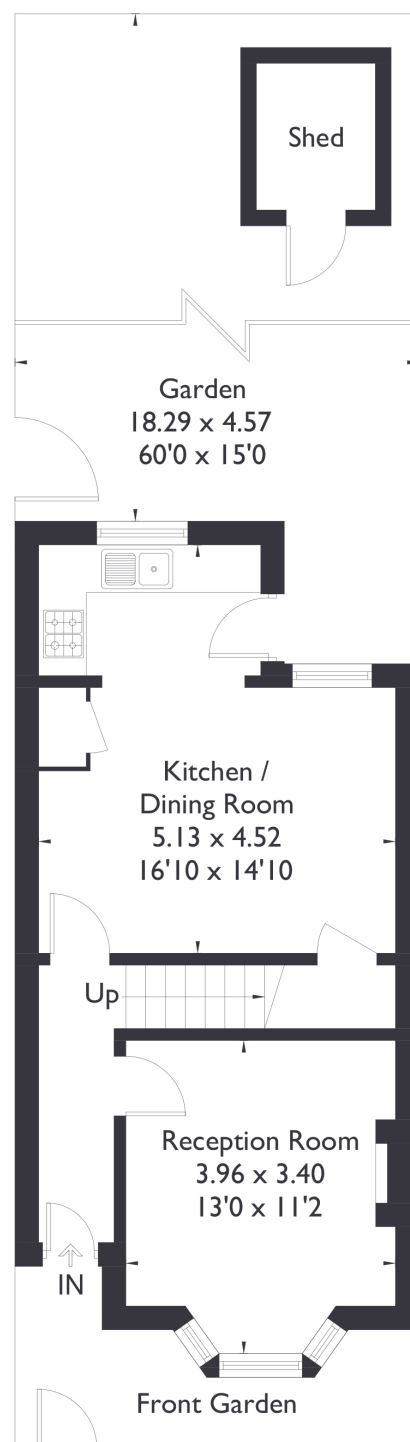
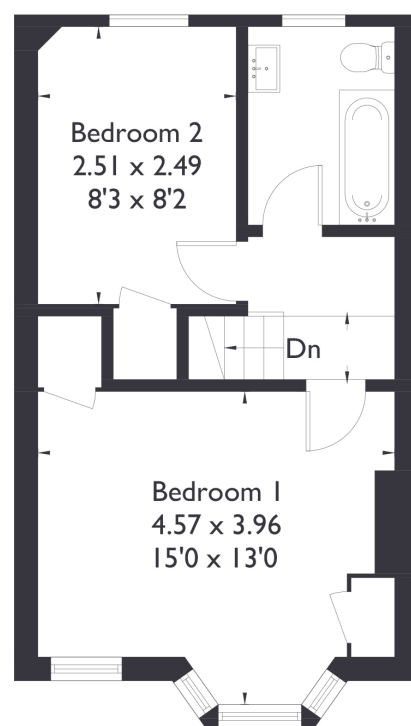


Altenburg Avenue, W13

Approximate Floor Area = 77.0 sq m / 829 sq ft



Ground Floor



First Floor



2 BEDROOM HOUSE

Altenburg Avenue, W13

£825,000

Welcome to this wonderful two bedroom, one bathroom home, perfectly situated in the heart of Northfields. This delightful property features a bright and inviting front reception room, which flows seamlessly into a spacious open-plan kitchen and living area. From here, you step out into a beautifully maintained south-facing garden, complete with convenient side access.

FEATURES

- Two Bedrooms
- One Bathroom
- Open Plan Kitchen/ Living
- Northfields Station
- Northfields Amenities
- Fielding Primary School
- EPC Rating C



2 BEDROOM HOUSE

Altenburg Avenue, W13

Upstairs, you'll find a generously sized main bedroom, a well presented bathroom, and an additional good sized bedroom, offering both comfort and practicality.

With Northfields Station just a five minute walk away and a fantastic selection of local amenities on your doorstep, this home is ideally located within the sought-after catchment area of Fielding Primary School. Don't miss the opportunity to view this wonderful home!

EPC Rating C.

