



Estate Agents and Solicitors

9 Maple Terrace, Kelty, Fife, KY4 0LP

Beautifully Presented, Three-Bedroom, End Terrace Villa with Gardens

Up to date price and viewing info at mov8realestate.com/property

espc rightmove  Zoopla
find your happy

Property Description

Beautifully presented, three-bedroom, end-terrace villa, with well-maintained gardens and a driveway. Set on a corner plot, located in an established residential area in the town of Kelty, Fife.

Comprises a living and dining room, kitchen, upper hall, three flexible bedrooms, and a family bathroom.

Highlights include a modern fitted kitchen with appliances, a stylish bathroom, contemporary flooring and lighting with tasteful decor. In addition, there is gas central heating, double glazing and good storage including bedroom wardrobes and a partially floored loft.

To the front is a lawn, established evergreens and a monoblock driveway; whilst to the rear is a paved patio, lawn, store shed, a wood-decked patio and a large second shed.

An impressive open-plan living space opens the accommodation, featuring dual-aspect natural light from the front and rear with French patio doors to the garden and ample space for both lounge and dining furniture. In addition, there is stylish modern flooring, a feature fireplace, and an under-stair storage cupboard.

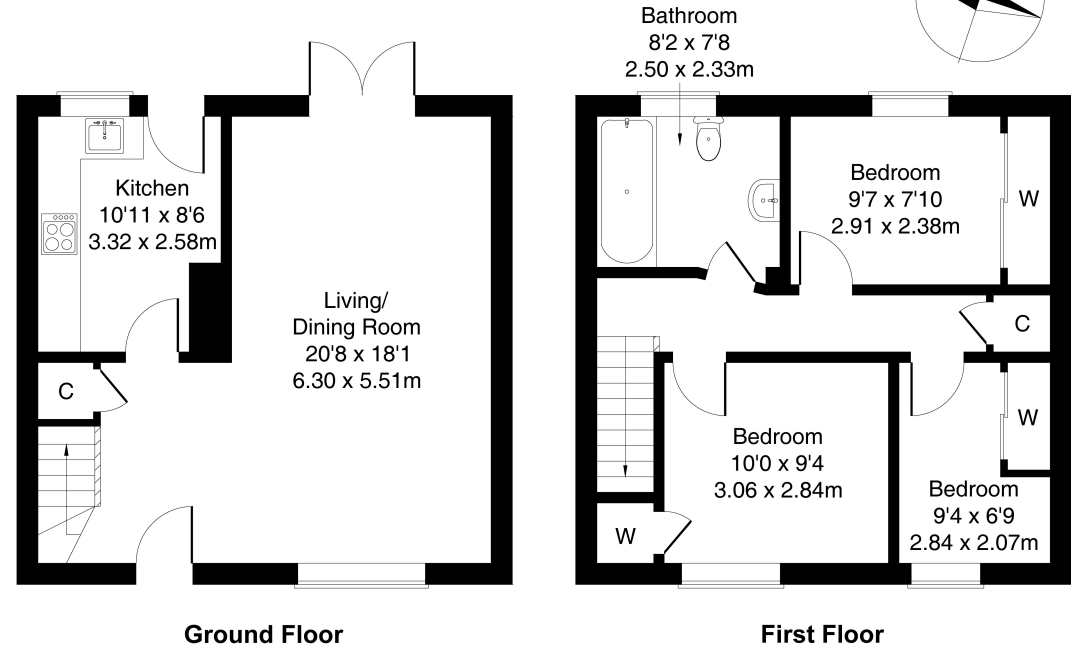
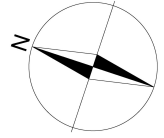
A separate kitchen also has a door to the rear garden, space for a breakfast table and recessed spotlighting. Quality fitted units and worktops include a sink with drainer, washing machine, fridge/freezer, and an integrated microwave, oven and five-ring gas hob with a canopy above.

On the first floor, three flexible bedrooms all feature modern wood-effect flooring and built-in wardrobes. Completing the accommodation, the generous bathroom is fitted with a contemporary suite, including a mains shower over the bath, a tall ladder-style radiator, and recessed spotlighting.



9 Maple Terrace, Kelty, KY4 0LP

Approximate Gross Internal Area: (872 sq ft - 81 sq m.)



Legal Disclaimer : Floor-plan and measurements are for illustrative guidance only, and not intended to form part of any contract.

Area Description





The town of Kelty is set amid lovely open green spaces such as Lochore Meadows Country Park, Loch Leven and Loch Fitty. The area is well served for schooling at all levels with multiple primaries in the area and secondary schooling provided by nearby Beath High School in Cowdenbeath, and Kinross High School further afield. Kelty is well-placed for commuting as it is adjacent to the M90 motorway with easy access to Edinburgh, Perth, Kinross and Dunfermline. A former coal mining village in the heart of Fife, the town has a good range of local shopping throughout, with a 'mobile'

bank, churches, a bowling club and other central amenities, and there are regular bus services to the main neighbouring towns of Cowdenbeath, Dunfermline and Kinross. Nearby Dunfermline offers a large retail park, an ASDA superstore, a leisure park with an Odeon cinema, and theatre and sports facilities. The neighbouring town of Kinross sits beside Loch Leven, the largest loch of the Scottish lowlands, and offers further amenities and outdoor recreation activities such as a golf course and 13 miles of walking and cycling trails.





Our Services

-  Free pre-sale property valuations
-  Great value fixed estate agency fees
-  Extensive buyer matching database
-  Purchase and sale conveyancing

Contact Us

0345 646 0208

sales@mov8realestate.com

www.mov8.com

Head Office

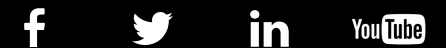
6 Redheughs Rigg, Edinburgh, EH12 9DQ

Glasgow Office

77 Renfrew Street, Glasgow, G2 3BZ



Estate Agents and Solicitors



These particulars do not form part of any contract and the statements or plans contained herein are not warranted nor are they to scale. All descriptions, dimensions, areas, reference to condition and necessary permissions for use and occupation and other details are given in good faith, and are believed to be correct, but any prospective purchaser should not rely on them as statements or representations of fact, and any prospective purchaser must satisfy themselves by inspection or otherwise as to the correctness of each of them. The Seller shall not be bound to accept the highest or any offer nor to accept a full offer of the Fixed Price where this is applicable. Approximate measurements have been taken by sonic device and measurements are most often taken to the widest point of any room or space. Services and appliances have not been tested for efficiency or safety and no warranty is given as to their compliance with any Regulations. Offers should be made using the Combined Standard Clauses.