



Kenton Close,
Formby, L37 7EA

Offers Over £325,000

SM

STEPHANIE MACNAB
ESTATE AGENT

This EXTENDED semi-detached house is in a quiet CUL-DE-SAC and is ideal for a family. We encourage you to look at the FLOORPLAN and/or arrange a viewing and see how this property might work for you.

LOCATION and ORIENTATION are two other key factors. The FRESHFIELD area is well-respected, and the property is within walking distance to Trinity St Peter's Primary School, which currently feeds to Formby High School. The REAR GARDEN enjoys a sunny SOUTH-FACING aspect.

There are TWO RECEPTION ROOMS and a SNUG. Alternatively, the snug could be used as a HOME OFFICE. The OPEN PLAN KITCHEN/DINER is a great space and ideal for a busy household.

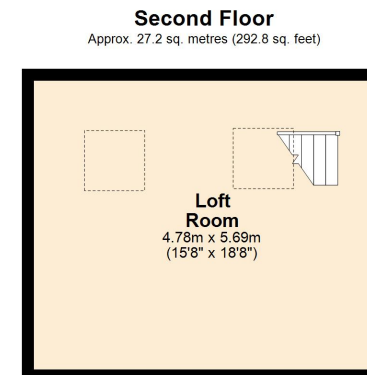
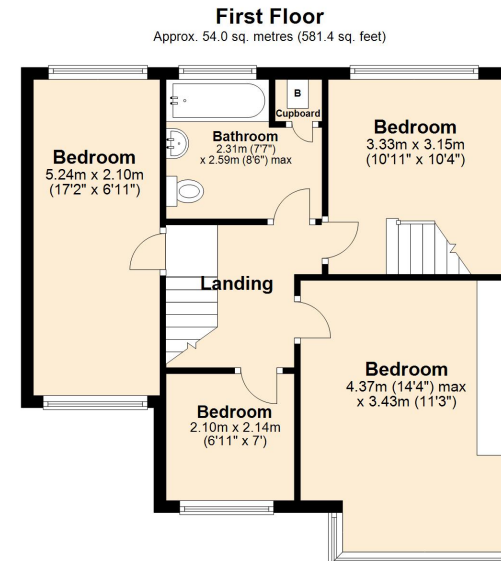
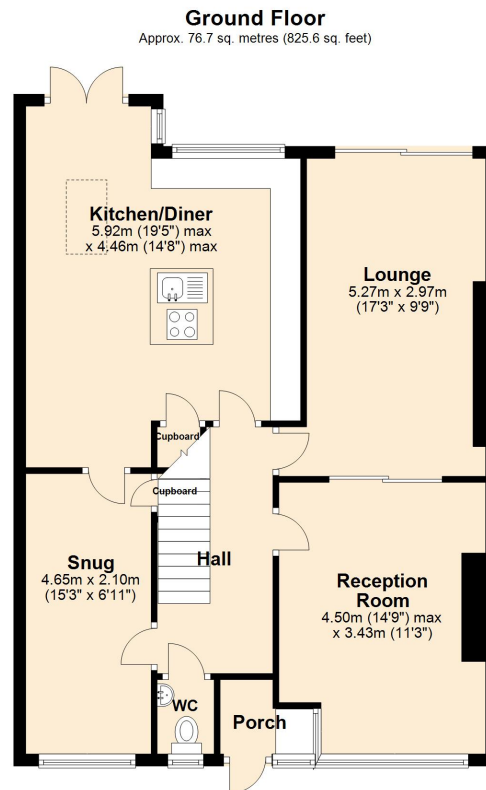
Upstairs, there are FOUR BEDROOMS and a FAMILY BATHROOM. The second bedroom has a staircase that takes you to the LOFT ROOM, which offers additional storage.

There is OFF-ROAD parking to the front, and the rear garden is enclosed.

To view, call 01704 516 626.







Total area: approx. 157.9 sq. metres (1699.7 sq. feet)

Plan produced using PlanUp.

