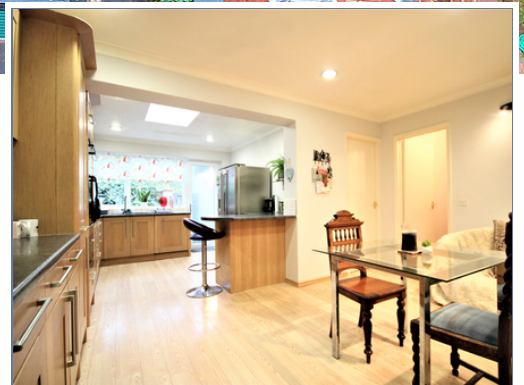




7 Medland, Woughton Park, Milton Keynes, Buckinghamshire, MK6 3BH

£630,000 Freehold

- Double garage and driveway parking
- Landscaped garden facing south and west
- Large, extended kitchen/breakfast room
- Garden room extension
- Highly desirable location
- 1/4 Acre Plot
- EPC Rating





GROUND FLOOR

Kitchen/Breakfast

6.33m x 4.31m (20' 9" x 14' 2")

Study

3.42m x 3.12m (11' 3" x 10' 3")

Dining Room

3.88m x 3.93m (12' 9" x 12' 11")

Living Room

4.62m x 4.42m (15' 2" x 14' 6")

Garden Room

3.35m x 4.33m (11' 0" x 14' 2")

FIRST FLOOR

Master Bedroom

4.65m x 3.71m (15' 3" x 12' 2")

Bedroom Four

3.15m x 1.89m (10' 4" x 6' 2")

Bedroom Three

3.22m x 3.39m (10' 7" x 11' 1")

Bedroom Two

2.66m x 2.78m (8' 9" x 9' 1")

Disclaimer

Whilst we have endeavoured to prepare our sales particulars accurately none of the services, appliances or equipment have been tested. A buyer should satisfy themselves on such matters prior to purchase. Any measurements or distances mentioned in these particulars are for guide reference only. If such particulars are fundamental to a purchase, buyers should rely on their own enquiries. All enquiries should be directed to Elevation Estate Agents in the first instance.

