

29a St Johns Road, Petts Wood, Orpington, Kent, BR5 1HS

Property Images

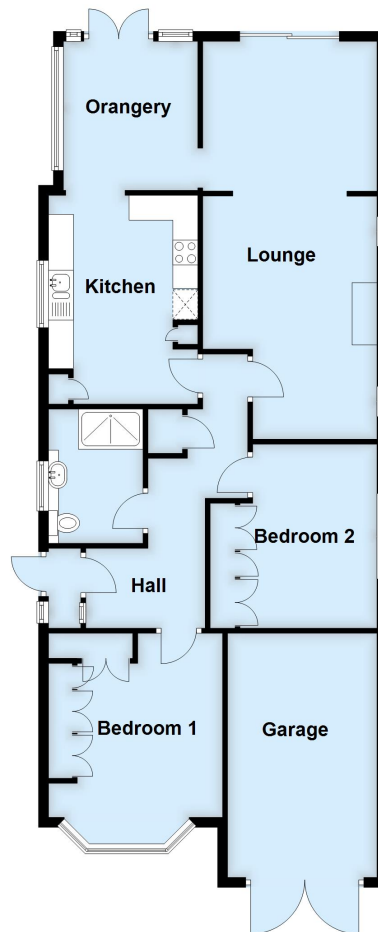






Ground Floor

Approx. 105.9 sq. metres (1140.0 sq. feet)



Total area: approx. 105.9 sq. metres (1140.0 sq. feet)

This plan is for general layout guidance and may not be to scale.
Plan produced using PlanUp.