



**GREGORY BROWN**  
RESIDENTIAL SALES & LETTINGS

£850,000 Freehold  
**FOR SALE**



## **Manor Park, Staines-upon-Thames, Surrey, TW18 4XE**

SITUATED IN THIS MUCH SOUGHT AFTER PRIVATE DEVELOPMENT IS THIS WELL PRESENTED AND SPACIOUS FOUR BEDROOM DETACHED PROPERTY IDEALLY POSITIONED FOR EASY ACCESS TO STAINES TOWN CENTRE, TWO RIVERS SHOPPING CENTRE & LOCAL MOTORWAY NETWORKS. The property benefits from a spacious lounge leading to dining room, modern kitchen/breakfast room, study, conservatory & downstairs W.C, four well-proportioned bedrooms (en-suite to Bed 1), further modern shower room, secluded garden, off-street parking and double-garage. No Onward Chain. Viewings Highly Recommended!

**Gregory Brown**

127a, High Street, Staines-upon-Thames, TW18 4PD

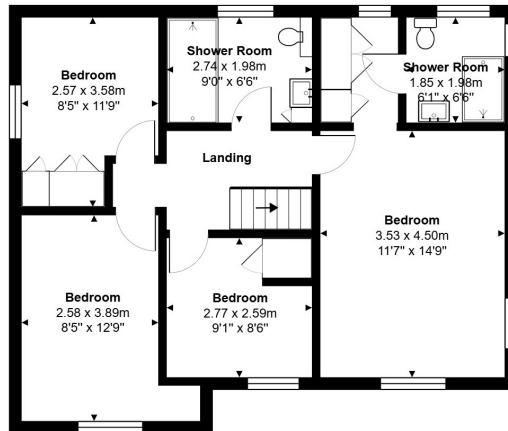
01784 451458

[staines@gregory-brown.co.uk](mailto:staines@gregory-brown.co.uk)

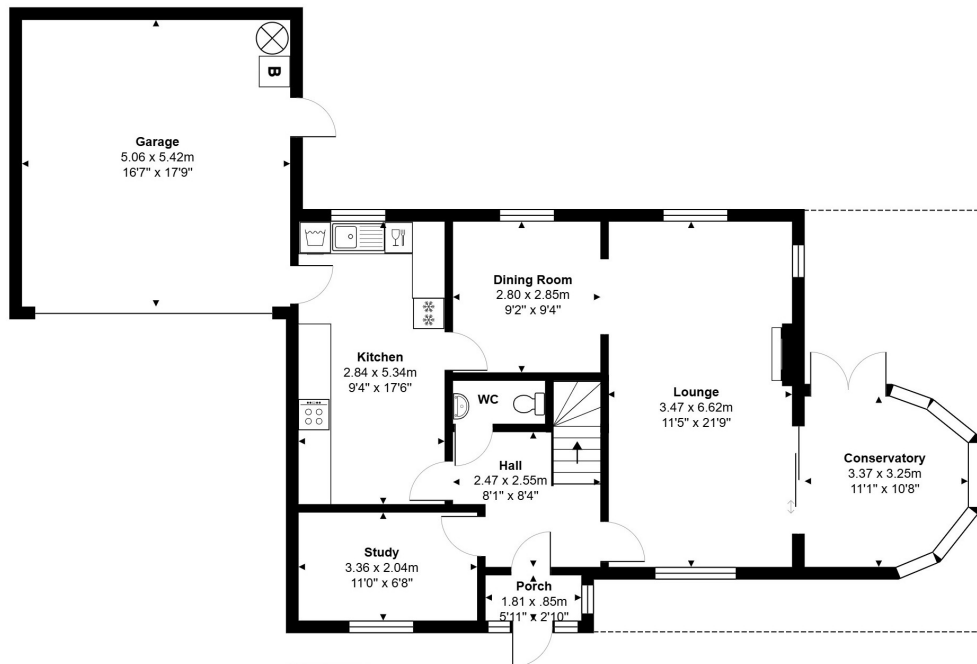
ROOM DESCRIPTIONS

\_\_\_\_\_

# FLOORPLAN



First Floor



Ground Floor

127a, High Street, Staines-upon-Thames, TW18 4PD

01784 451458

staines@gregory-brown.co.uk