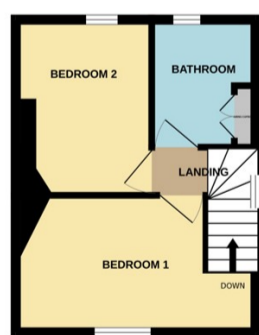
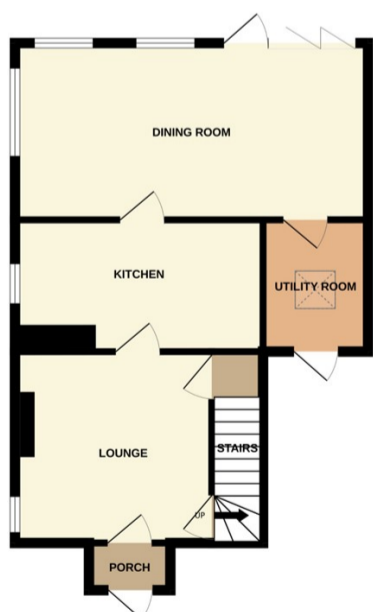




Dyke

£275,000



DETACHED RAILWAY COTTAGE Rosedale are pleased to offer this lovely well presented property in the sought after village of Dyke just North of Bourne. The property has two bedrooms, family bathroom, lounge, refitted kitchen, dining room and utility, with new carpets fitted upstairs. The property has no onward chain, and is ready to move in. There is driveway parking for a number of vehicles and a fully enclosed rear garden with brick built storage shed. To fully appreciate this village property viewings are highly recommended. EPC Energy Rating D/ Council Tax Band B.