

FOR SALE  
£200,000

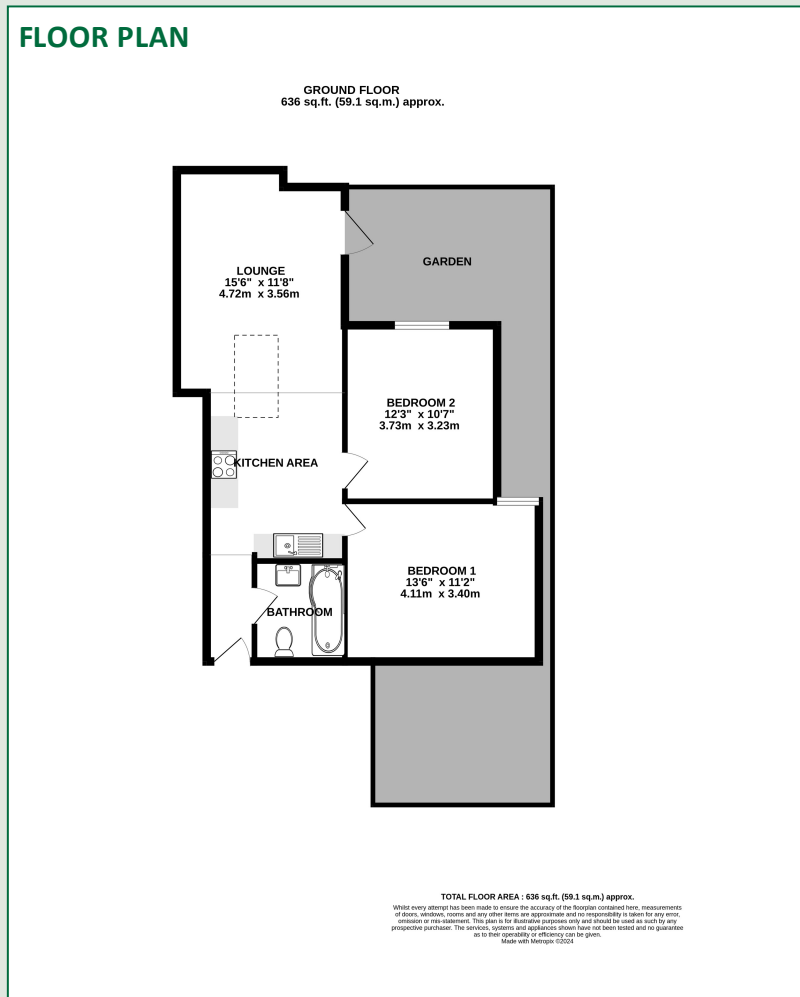




**DESCRIPTION**

We are delighted to bring to the market this spacious two-bedroom property that has been completely renovated throughout. The accommodation comprises an entrance hallway, open-plan kitchen/dining/living room, two double bedrooms, and a bathroom. The property benefits from it's own private garden, no onward chain and a stones throw to Newbury town centre and the train station.

An internal viewing is highly recommended.



- Private garden
- Town centre location
- Freehold
- Great buy to let investment
- No onward chain

**ENERGY EFFICIENCY RATING**

Energy Efficiency Rating		Current	Potential
<i>Very energy efficient - lower running costs</i>			
(92+)	<b>A</b>		
(81-91)	<b>B</b>		
(69-80)	<b>C</b>		72
(55-68)	<b>D</b>	53	
(39-54)	<b>E</b>		
(21-38)	<b>F</b>		
(1-20)	<b>G</b>		
<i>Not energy efficient - higher running costs</i>			
<b>England, Scotland &amp; Wales</b>		EU Directive 2002/91/EC	

