



Williams Estates

60, Moss Road
Northwich CW8 4BL

£300,000

www.westates.co.uk
01606 331784



- Large Victoria End-Terrace with Garage
- Two Reception Rooms
- Kitchen Breakfast Room
- Utility Room & Shower Room
- Three First Floor Bedrooms
- Modern Bathroom
- Large Loft Bedroom
- Mature Gardens, Garage & On Road Parking

Description

A large Victorian end-terrace house with the unusual benefit of having a good size rear garden and detached garage. The property provides well-proportioned accommodation with gas central heating and PVCu double glazed windows, the accommodation comprises: Entrance vestibule and hallway, front lounge, rear dining room/sitting room, large kitchen breakfast room, utility room and shower room on the ground floor, three bedrooms and bathroom on the first floor and there is a converted loft room in the attic. Externally there is a large, mature rear garden, a detached garage and there is easy on road parking on an adjacent lane located off Moreton Street. An internal viewing appointment is advised.



Location
Tenure

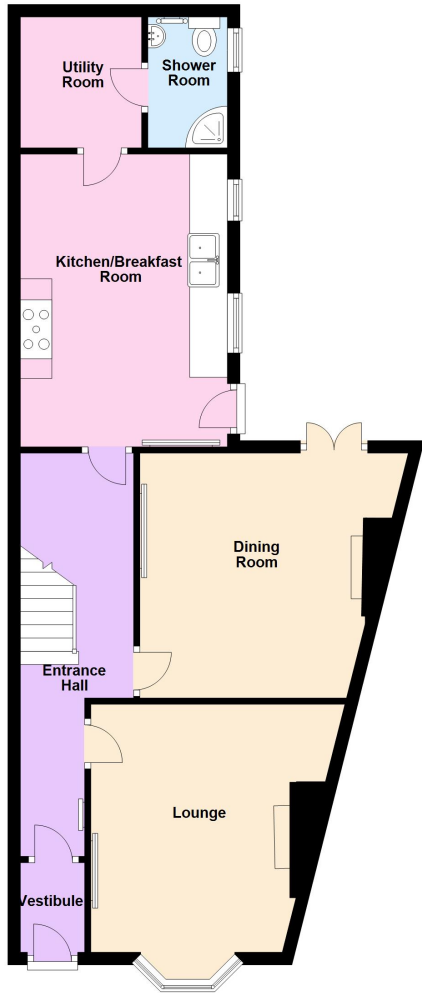
EPC Rating: E

Important Notes
Type Here



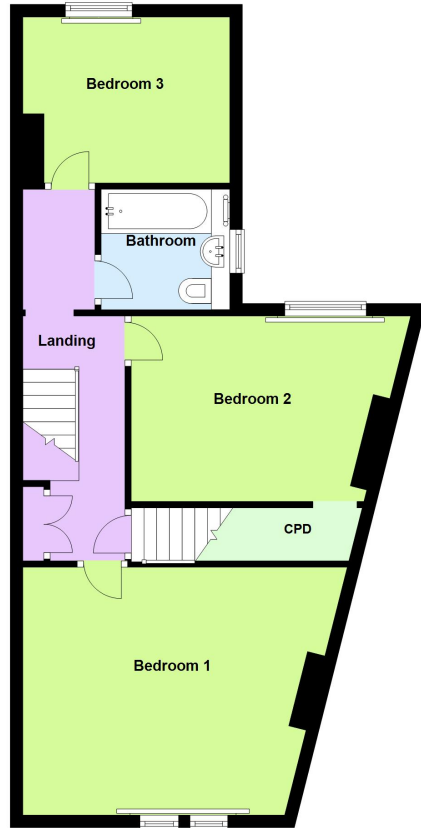
Ground Floor

Approx. 64.1 sq. metres (690.0 sq. feet)



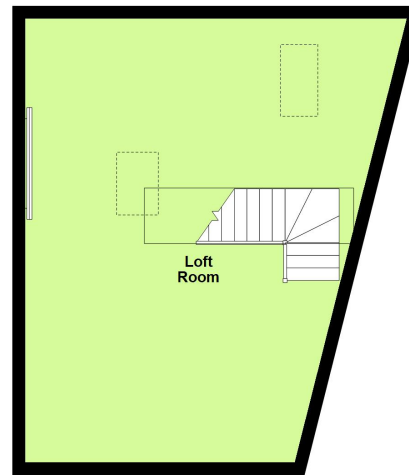
First Floor

Approx. 56.8 sq. metres (610.9 sq. feet)



Second Floor

Approx. 36.6 sq. metres (394.0 sq. feet)



Total area: approx. 157.5 sq. metres (1694.9 sq. feet)

