



23 Shoreline East, Shoreline Crescent, Folkestone, Kent, CT20 1FD

EPC Rating = B

Guide Price £680,000





A two bedroom exquisite fourth floor apartment which offers coastal living with a luxury and contemporary design. Elegance and functionality converge seamlessly in this exclusive residence. The open plan living space with floor-to-ceiling windows invites an abundance of natural light and opens onto a stunning balcony. The individually designed kitchen by 'Lorien' features composite stone worktops, Bosch appliances, utility cupboard with space for a washing machine. The primary bedroom with a spacious en-suite. Second bedroom and shower room. The property boasts high-end specifications including underfloor heating, triple-glazed UV-protected windows and doors, a mechanical vent heat recovery system, and a video entry system for secure living. Residents can enjoy the convenience of a concierge service, providing a seamless blend of luxury and assistance. Allocated parking is available in the secure garage. Communal gardens. Direct beach access. Please contact our team for more information and to arrange a visit to Shoreline to view this and other finished apartments and beach houses. EPC RATING = B

Guide Price £680,000

Tenure Leasehold

Property Type Apartment

Receptions 1

Bedrooms 2

Bathrooms 2

Heating Gas

EPC Rating B

Council Tax Band D

Folkestone & Hythe



Situation

Shoreline Crescent is in a superb beachfront development set on the beach. Folkestone has undergone extensive regeneration and boasts a thriving collection of artist's studios and creative businesses, as well as a wide range of amenities such as shopping centre, supermarkets, independent shops, restaurants and leisure facilities. The Old High Street and 'the cultural heart' of Folkestone Creative Quarter are also nearby. There is a mainline railway station at Folkestone offering a High Speed service to St Pancras stations with an approx. journey time of 53 minutes. Channel Tunnel terminal is (Approx. 2.5 miles) The M20 connection to the motorway network is within close proximity.

The accommodation comprises

Shoreline entrance with lifts and stairs

Fourth floor

Apartment entrance

Hallway

Open plan living/dining room

17' 8" x 11' 9" (5.38m x 3.58m)

Kitchen area

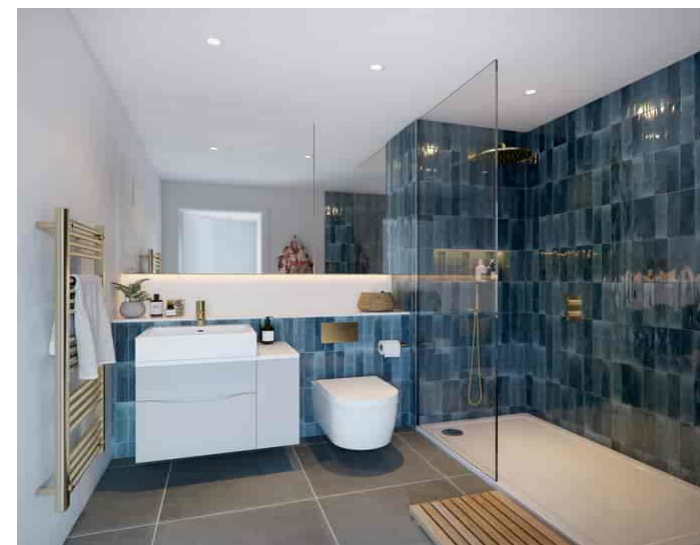
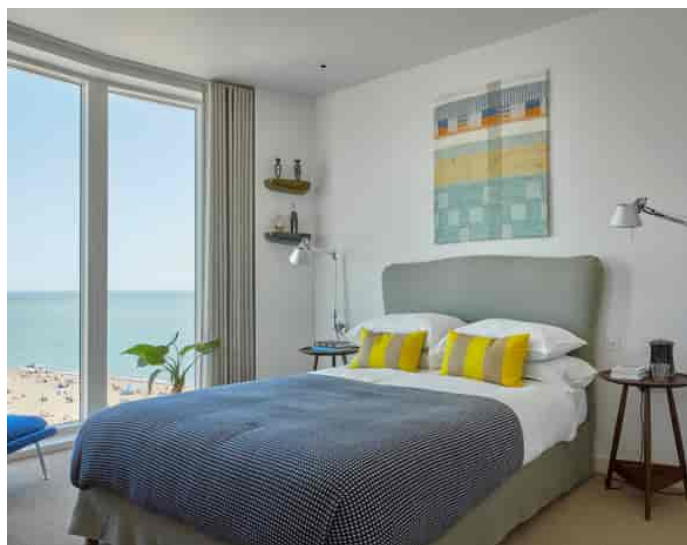
11' 9" x 8' 3" (3.58m x 2.51 m)

Balcony

Utility cupboard

Bedroom one

11' 4" x 10' 3" (3.45m x 3.12m)



En suite

Bedroom two

14' 6" x 10' 2" (4.42m x 3.10m)

WC/shower room

Outside

Allocated parking in the secure garage with electronic gates
with an ANPR system for swift and controlled access

Communal gardens to the rear

Lease information

A 999-year lease from December 2022 and 10-year Build Zone warranty ensure long-term peace of mind.

Service charge

Please contact us for service charge information.
No ground rent.

Agent note

The photographs used are a selection of the show apartments. There are also some CGI of the development.

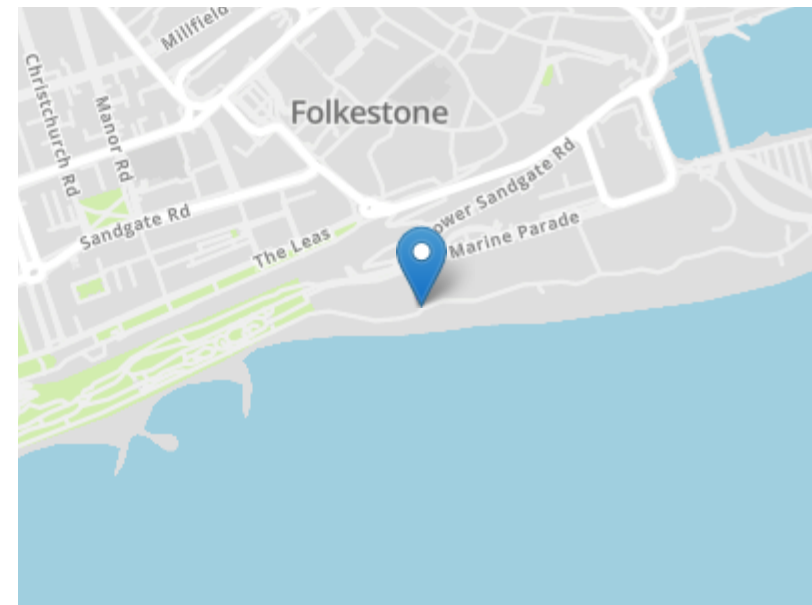
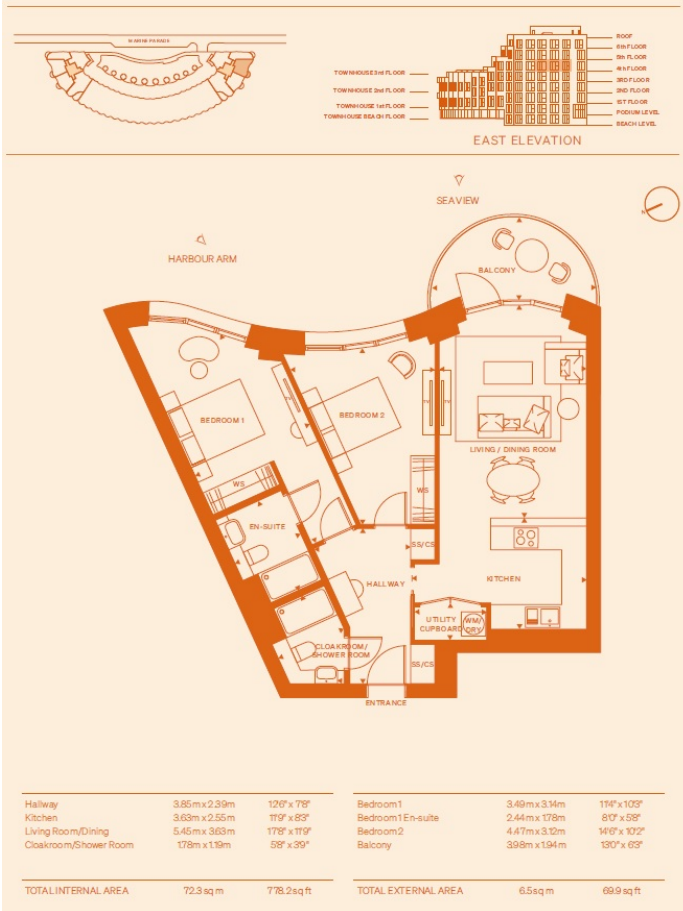






N° 23 SHORELINE CRESCENT EAST

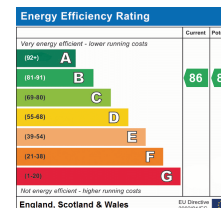
TWO BEDROOM APARTMENT | PLOT AP51-04 | PALETTE 1 (PAGE 54)



Need to book a viewing?

If you would like to book a viewing please contact our office on **01303 863393** or email sales@laingbennett.co.uk

See all our properties at



www.laingbennett.co.uk

The Estate Office
8 Station Road
Lyminge
Folkestone
Kent
CT18 8HP



These property details are intended to give a fair description and give guidance to prospective Purchaser/Tenant. They do not constitute an offer or contract of Sale/Tenancy and all measurements are approximate. While every care has been taken in the preparation of these details neither Laing Bennett Ltd nor the Vendor/ Landlord accept any liability for any statement contained herein. Laing Bennett Ltd has not tested any services, appliances, equipment or facilities, and nothing in these details should be deemed to be a statement that they are in good working order or that the property is in good structural condition or otherwise. We advise all applicants to commission the appropriate investigations before Exchange of Contracts/entering into a Tenancy Agreement. It should not be assumed that any contents/furnishing, furniture etc. photographed are included in the Sale/Tenancy, nor that the property remains as displayed in the photographs. No person in the employment of Laing Bennett Ltd has authority to make or give any representation or warranty whatever in relation to this property.