



# Coopers Yard

HITCHIN,  
Hertfordshire, SG5 1AU  
Guide Price £290,000

country  
properties

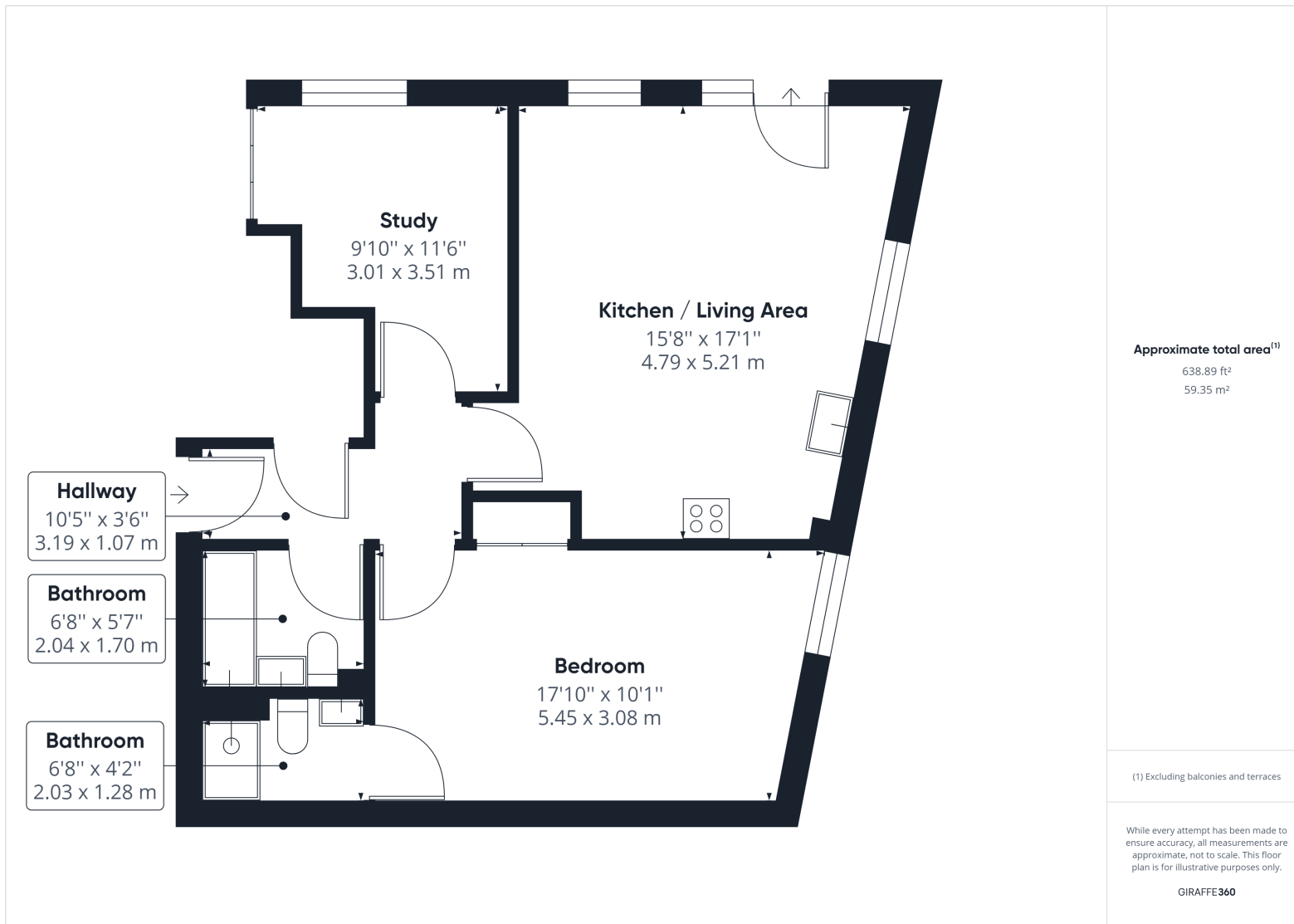
Coopers Yard is situated adjacent to the west of the original Market Place. Since 1898 the yard had been home to T Brooker & Sons, a family company supplying building products and services to Hertfordshire from Bucklesbury. The design of the Coopers Yard development harks back to the earlier days with a pedestrian street linking the town centre and the west side of Hitchin with an attractive range of buildings in the heart of the historic town.

This ground floor apartment offers modern and spacious accommodation comprising of an entrance hall with airing cupboard, a generous open-plan living room with dining area and dual aspect windows with modern fitted kitchen that leads to access to a patio space. The principle bedroom offers fitted wardrobes and an en-suite shower room. The accommodation is finished with a second bedroom and family bathroom suite. The property also has the added benefit of secure underground parking.

- A beautiful two bedroom ground floor apartment
- Open plan living and kitchen area with dual aspect windows
- Double doors leading onto a patio
- Town centre location
- 1 mile, 23 mins walk to Hitchin mainline train station (as per Google Maps)
- No onward chain







All measurements are approximate and quoted in metric with imperial equivalents and for general guidance only and whilst every attempt has been made to ensure accuracy, they must not be relied on. The fixtures, fittings and appliances referred to have not been tested and therefore no guarantee can be given and that they are in working order. Internal photographs are reproduced for general information and it must not be inferred that any item shown is included with the property. For a free valuation, contact the numbers listed on the brochure.

Viewing by appointment only

Country Properties | 6, Brand Street | SG5 1HX

T: 01462 452951 | E: hitchin@country-properties.co.uk

www.country-properties.co.uk

country  
properties