

# THOMAS CONNOLLY

ESTATE AGENTS | LETTING AGENTS | NEW HOMES | PROPERTY MANAGEMENT

## 6 LONG AYRES, CALDECOTTE, MILTON KEYNES, MK7 8HF

For Sale | Freehold | £300,000



1



2



1



D

### Contact us:

#### Phone:

01908 77 44 22

#### Email

Sales@tcmk.co.uk

#### Address

Thomas Connolly  
7 Rillaton Walk  
Brooklyn House  
MK9 2FZ



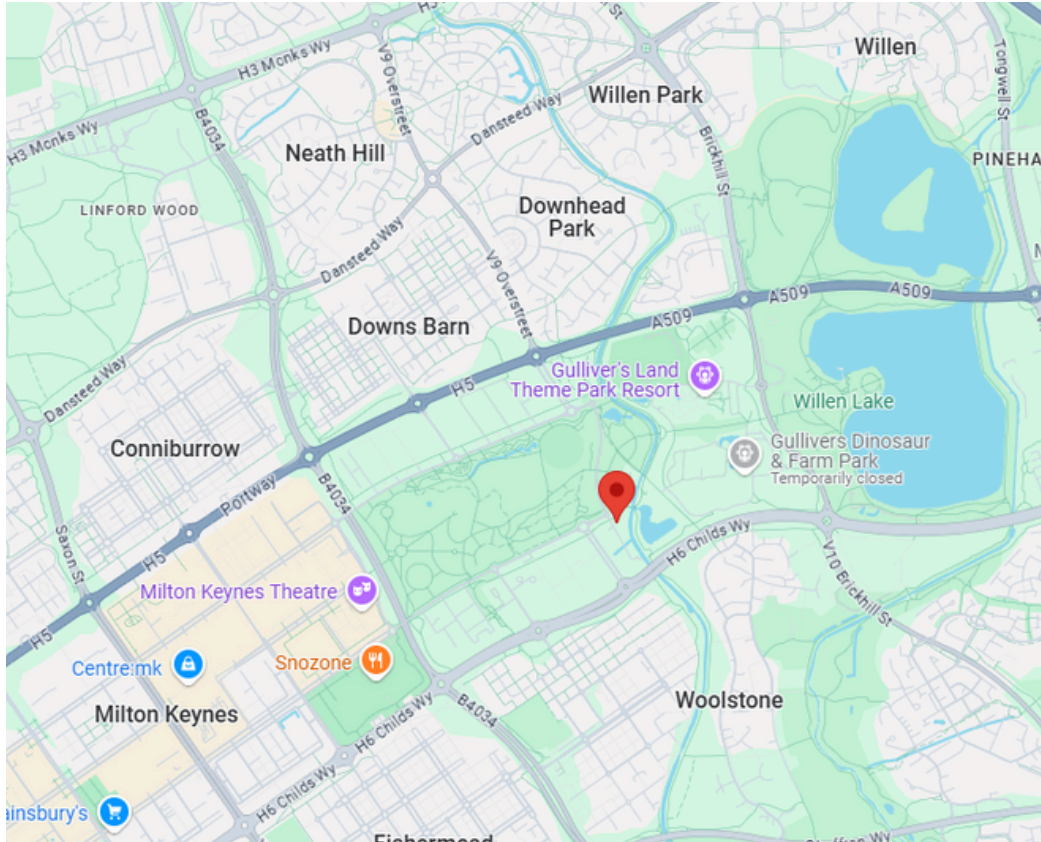
## Property Description

The accommodation in brief comprises: entrance hall, fitted kitchen to the front, and a bright, spacious living area to the rear with French doors opening out onto the enclosed rear garden. To the first floor, the property offers two well-proportioned bedrooms, with bedroom one featuring built-in wardrobes, and a modern family bathroom. Externally, the property benefits from a private rear garden ideal for entertaining, along with driveway parking.





# 6 Long Ayres, Caldecotte, Milton Keynes, MK7 8HF



## Location

Caldecotte is a desirable residential location, renowned for its proximity to the picturesque Caldecotte Lake and extensive green spaces. Perfect for outdoor enthusiasts, the area offers beautiful walking and cycling routes, while still being within easy reach of Central Milton Keynes and the M1 motorway, providing excellent commuter links. Local amenities include well-regarded primary and secondary schools, convenience stores, and leisure facilities, all contributing to a strong community feel.



## THOMAS CONNOLLY ESTATE AGENTS

Estate Agents | Letting Agents | New Homes | Property Management

W: [Thomasconnolly.co.uk](http://Thomasconnolly.co.uk) | P: 01908 77 44 22 | E: [Sales@tcmk.co.uk](mailto:Sales@tcmk.co.uk)







**THOMAS CONNOLLY**

ESTATE AGENTS | LETTING AGENTS | NEW HOMES | PROPERTY MANAGEMENT





## Room Descriptions:

Entrance Hall

Kitchen 6'5" 9'6"

Sitting Room 14'8" 12'6"

First Floor

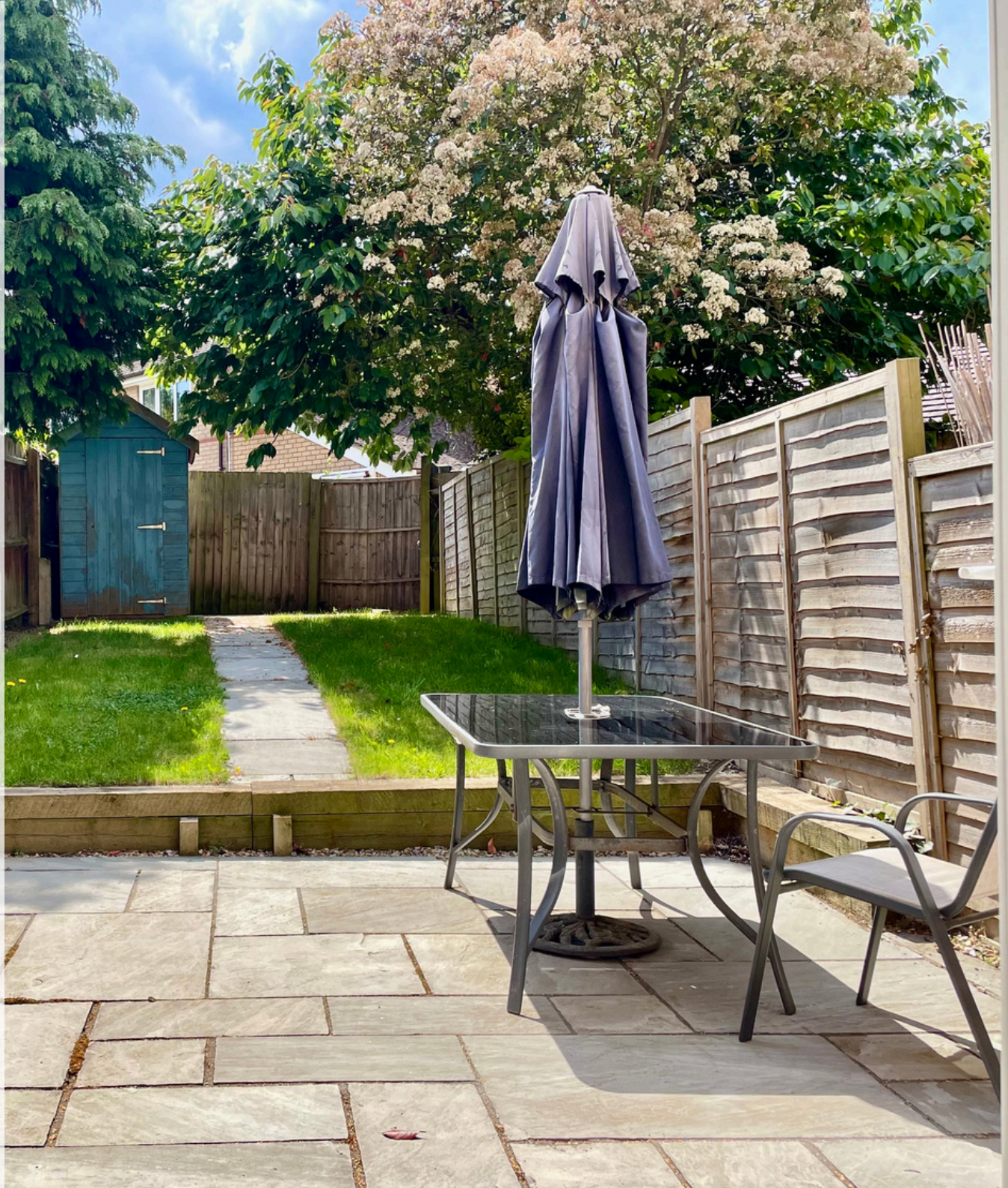
Bedroom one 9'11" 12'6"

Bedroom Two 9'1" 9'4"

Family bathroom 6'3" 6'

Rear Garden

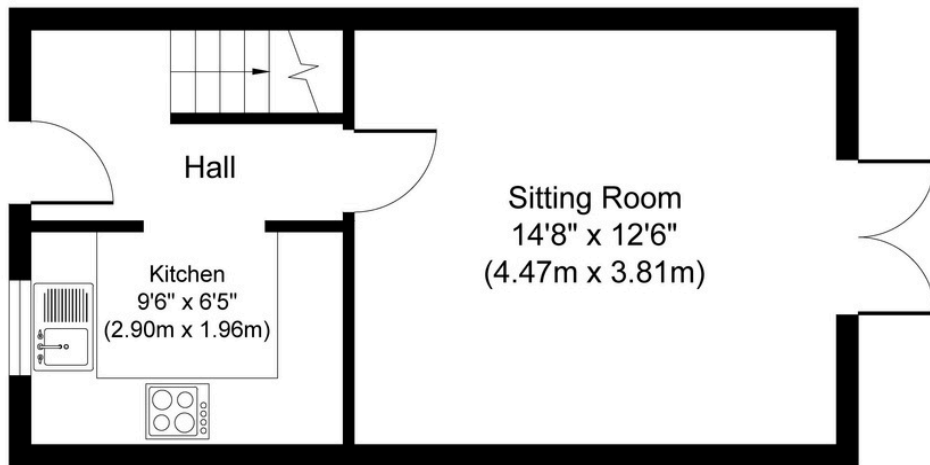
Single Garage



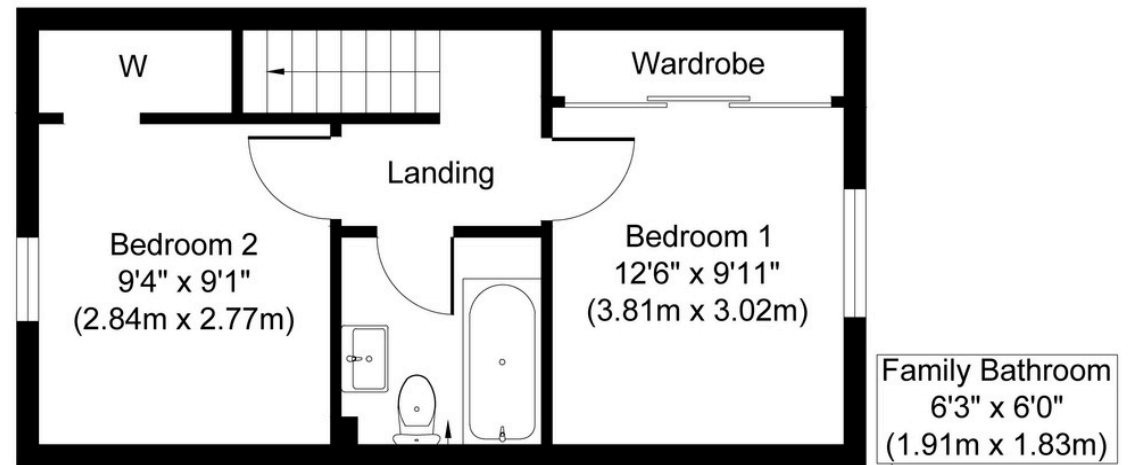


# THOMAS CONNOLLY

ESTATE AGENTS | LETTING AGENTS | NEW HOMES | PROPERTY MANAGEMENT



**Ground Floor**



**First Floor**

**Approx. Gross Internal Floor Area 613 sq. ft / 56.90 sq. m**

Whilst every attempt has been made to ensure the accuracy of the floor plan contained here, measurements of doors, windows, rooms and any other items are approximate and no responsibility is taken for any error, omission, or mis-statement. This plan is for illustrative purposes only and should be used as such by any prospective purchaser or tenant. The services, systems and appliances shown have not been tested and no guarantee as to their operability or efficiency can be given.

Copyright V360 Ltd 2025 | [www.houseviz.com](http://www.houseviz.com)