



# St Peters Close

Flitwick,  
Bedfordshire, MK45 1EZ  
£250,000

country  
properties

Offered for sale with no upper chain, this mid-terrace home has been freshly decorated in a neutral scheme, with newly fitted carpets (where stated), offering a blank canvas to personalise to your taste. The accommodation includes a fitted kitchen with space to dine, living room, and ground floor cloakroom/WC, adding practicality. Upstairs, there are two well-proportioned bedrooms plus a shower room. Designed for ease of maintenance, the enclosed rear garden is mainly laid to paving and stone chippings with a useful brick-built store, whilst communal parking is provided adjacent to the terrace. EPC Rating: C.

## GROUND FLOOR

### ENTRANCE HALL

Accessed via front entrance door with double glazed leaded light effect inserts and canopy porch over. Newly fitted carpet. Radiator. Stairs to first floor landing. Built-in storage cupboard. Access to living room and to:

### KITCHEN/DINING ROOM

Double glazed window to front aspect. A range of base and wall mounted units with work surface areas incorporating stainless steel sink and drainer. Tiled splashbacks. Space for cooker, fridge/freezer and washing machine. Built-in storage cupboard. Radiator. Wood effect flooring.

### LIVING ROOM

Double glazed window to rear aspect. Radiator. Newly fitted carpet. Access to:

### REAR LOBBY

Part glazed door to rear aspect. Further door to:

### CLOAKROOM/WC

Two piece suite comprising: Close coupled WC and wall mounted wash hand basin. Radiator.

## FIRST FLOOR

### LANDING

Built-in airing cupboard, plus cupboard housing gas fired boiler. Newly fitted carpet. Hatch to loft. Access to both bedrooms and bathroom.

### BEDROOM 1

Double glazed window to rear aspect. Radiator. Newly fitted carpet.

### BEDROOM 2

Double glazed window to front aspect. Radiator. Newly fitted carpet.



## SHOWER ROOM

Opaque double glazed window to front aspect. Three piece suite comprising: Walk-in shower cubicle with electric shower, WC with concealed cistern and wash hand basin with mixer tap and storage beneath. Radiator.

## OUTSIDE

### FRONT GARDEN

Mainly laid to stone chippings with inset shrubs. Pathway leading to front entrance door. Bin store.

### REAR GARDEN

Immediately to the rear of the property is a paved patio seating area, with pathway leading to gated rear access. Remainder mainly laid to stone chippings. Shrub and hedge borders. Brick-built store. Part enclosed by brick walling and timber fencing.

### COMMUNAL PARKING AREA

Located to the right hand side of the terrace.

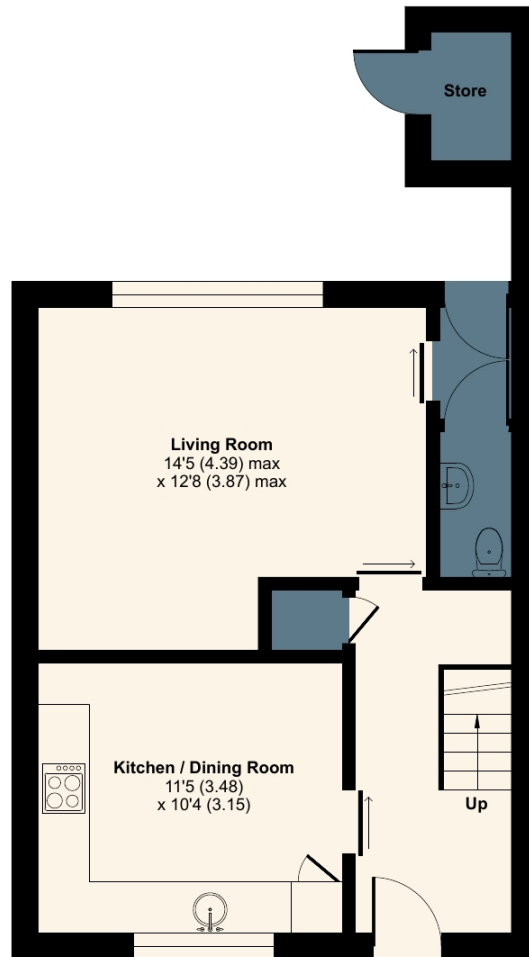
Current Council Tax Band: B.



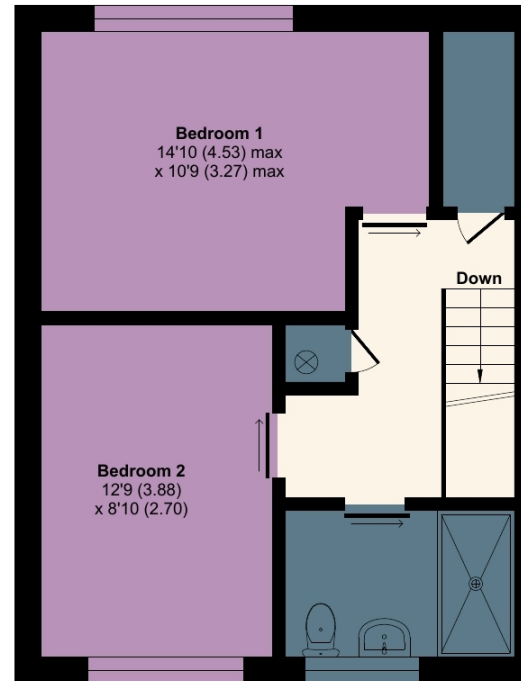


Approximate Area = 868 sq ft / 80.6 sq m (excluded outbuilding)

For identification only - Not to scale



GROUND FLOOR



FIRST FLOOR

Energy Efficiency Rating				
	Current	Potential		
Very energy efficient - lower running costs				
(92+)	69	80		
A				
(81-91)				
B				
(69-80)				
C				
(55-68)				
D				
(39-54)				
E				
(21-38)				
F				
(1-20)				
G				
Not energy efficient - higher running costs				
England, Scotland & Wales				
EU Directive 2002/91/EC				

 Floor plan produced in accordance with RICS Property Measurement 2nd Edition, Incorporating International Property Measurement Standards (IPMS2 Residential). © nchecon 2026. Produced for Country Properties. REF: 1401096



All measurements are approximate and quoted in metric with imperial equivalents and for general guidance only and whilst every attempt has been made to ensure accuracy, they must not be relied on. The fixtures, fittings and appliances referred to have not been tested and therefore no guarantee can be given and that they are in working order. Internal photographs are reproduced for general information and it must not be inferred that any item shown is included with the property. For a free valuation, contact the numbers listed on the brochure.

## Viewing by appointment only

Country Properties | 3 The Russell Centre, Coniston Road | MK45 1QY

T: 01525 721000 | E: [flitwick@country-properties.co.uk](mailto:flitwick@country-properties.co.uk)

[www.country-properties.co.uk](http://www.country-properties.co.uk)

country  
properties