

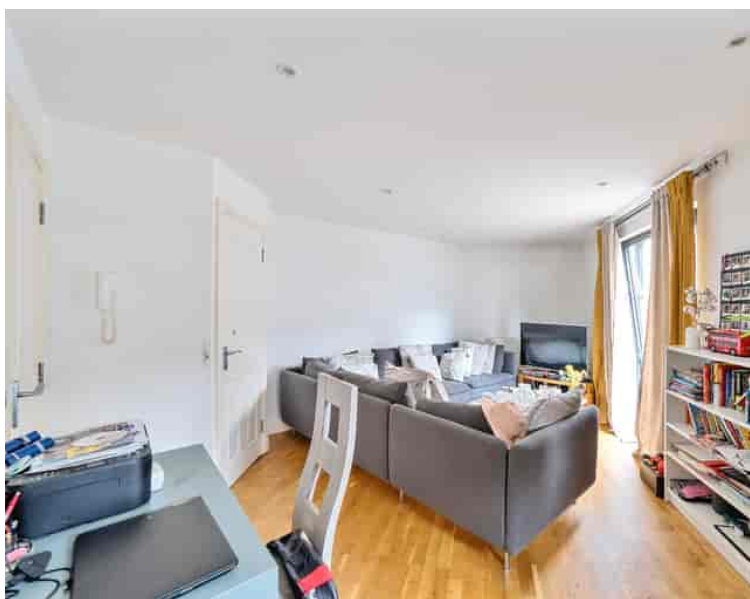


Acton Lane, London, W4 5JQ

**Cow & Co**  
LONDON



Guide Price of £700,000 to £800,000. A brilliantly located two bedroom split level apartment located in the heart of Chiswick with direct access onto a simply stunning roof terrace overlooking the wide open spaces of Turnham Green. This unique apartment is complete one off with its own private entrance and situated moments from Chiswick Park tube station. The property is spread over three floors and is offered to the market with no onward chain.

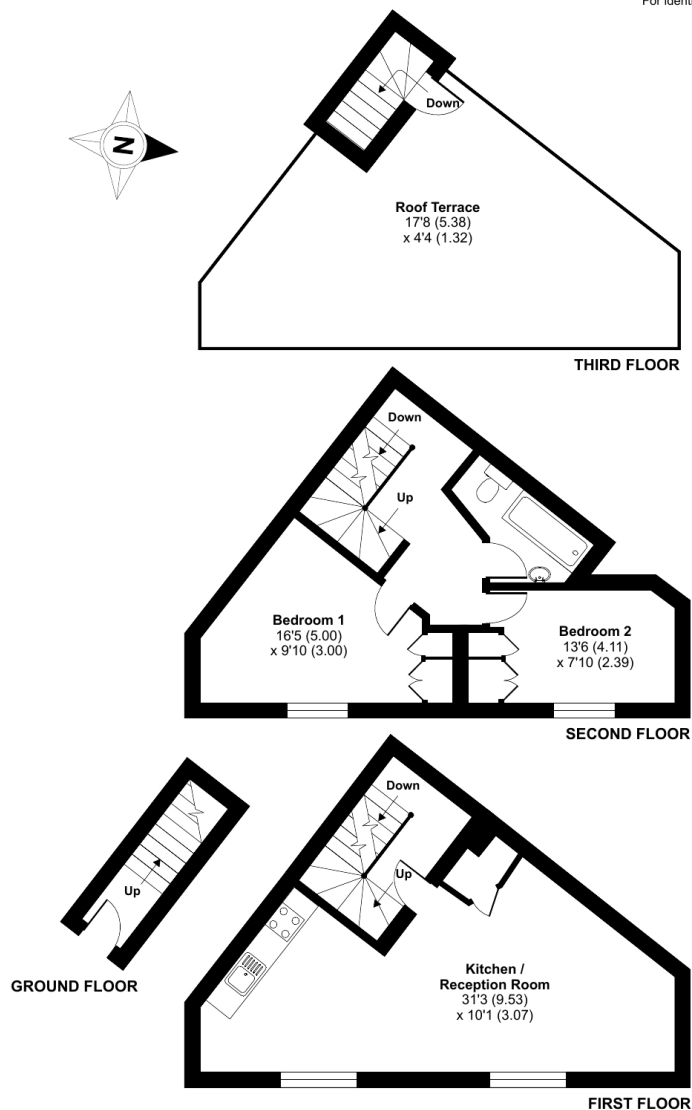


- A unique two bedroom modern apartment with a private entrance
- Spread over three floor
- Direct access on a large private roof terrace overlooking Turnham Green
- Bright & airy throughout
- Modern fixtures and fittings
- Close proximity to local transport links and amenities
- No onward chain
- Sleek contemporary style kitchen open plan to lovely living area with ample space to dine and entertain

# Old Timber Court, Acton Lane, London, W4

Approximate Area = 851 sq ft / 79 sq m

For identification only - Not to scale



Floor plan produced in accordance with RICS Property Measurement Standards incorporating International Property Measurement Standards (IPMS2 Residential). © nchecon 2024. Produced for Cow & Co Properties Ltd. REF: 1146764

Tel: 0208 065 0010  
Email: [thehub@cowandco-london.com](mailto:thehub@cowandco-london.com)  
Web: [cowandco-london.com](http://cowandco-london.com)

Agents note: All measurements are approximate and whilst every attempt has been made to ensure accuracy they are for general guidance only and must not be relied on. The fixture and fittings referred to have not been tested and therefore no guarantee can be given that they are in working order. Internal photographs are reproduced for general information and it must not be inferred that any item shown is included with the property.

# Cow & Co

LONDON