



5 Durley Dene Crescent

Bridge Of Earn, Perth,
PH2 9RD





Summary

This well-presented three-bedroom detached house, which is part of an established cul-de-sac in Bridge of Earn, is complemented by a minimalist front garden, a driveway, a single garage and an enclosed rear garden with a shed for storage and an elevated wooden deck enjoying outdoor seating space.

In addition, the home further enjoys a large living room with sliding doors leading to the rear deck, a fitted dining kitchen with two windows for ample natural light, three double bedrooms (two with wardrobes) and a family bathroom with shower-over-bath and vanity.

Extras: All fitted floor and window coverings, light fittings and kitchen appliances are included in the sale.

Features

- Detached house in a residential development
- Situated in picturesque Bridge of Earn
- Tasteful modern interiors throughout
- Entrance hall with under-stair storage
- West-facing living room with fireplace
- Dining kitchen with utility room
- Landing with storage
- Three double bedrooms (two with wardrobes)
- Bathroom with overhead shower
- Private gardens to the front and rear
- Wooden deck with a seating area
- Private driveway and garage parking
- Gas central heating and double glazing



“A generous detached bungalow with three well-proportioned double bedrooms, a spacious living room, fitted kitchen and modern bathroom.”





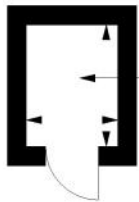


“This property represents an ideal family home for first-time buyers, professionals, couples, and young families.”



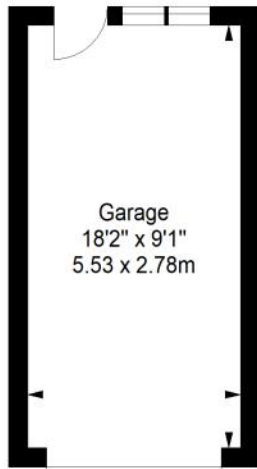
Floorplan

Shed
Approx. 1.9 sq. metres (20.4 sq. feet)



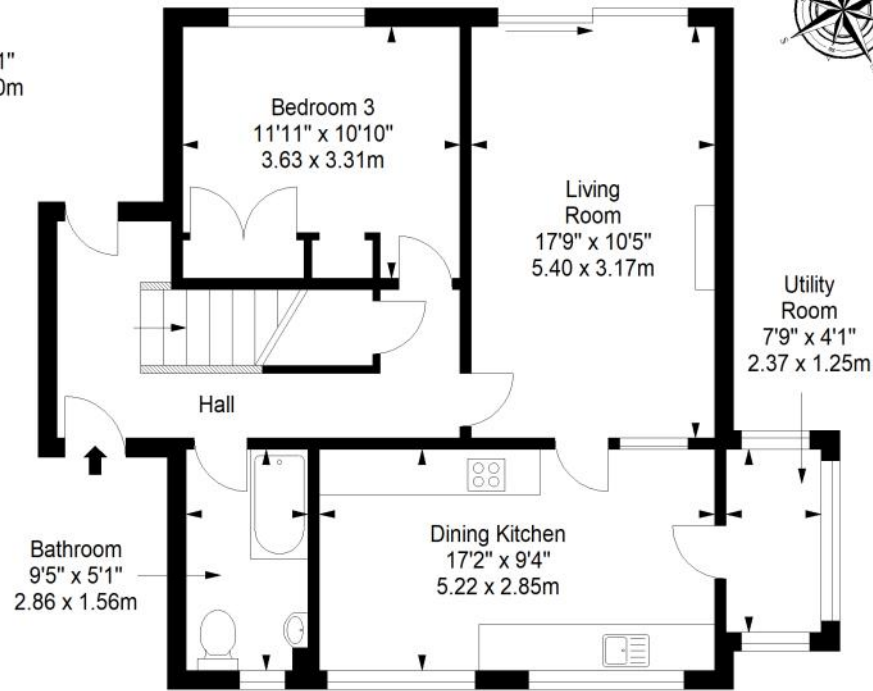
Shed
5'3" x 3'11"
1.60 x 1.20m

Garage
Approx. 15.4 sq. metres (165.8 sq. feet)



Garage
18'2" x 9'1"
5.53 x 2.78m

Ground Floor
Approx. 67.1 sq. metres (722.3 sq. feet)



Bedroom 3
11'11" x 10'10"
3.63 x 3.31m

Living Room
17'9" x 10'5"
5.40 x 3.17m

Utility Room
7'9" x 4'1"
2.37 x 1.25m

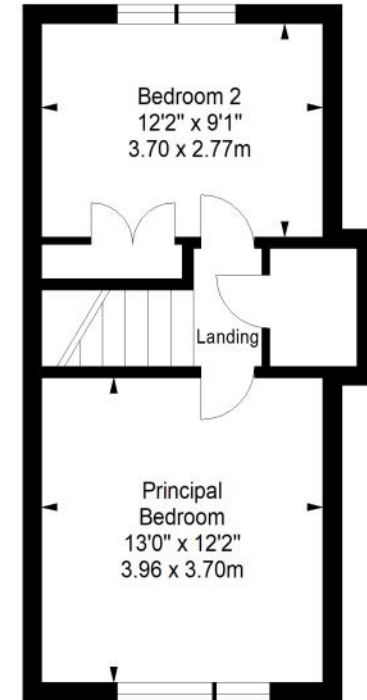
Hall

Bathroom
9'5" x 5'1"
2.86 x 1.56m

Dining Kitchen
17'2" x 9'4"
5.22 x 2.85m

Total area: approx. 117.1 sq. metres (1260.5 sq. feet)

First Floor
Approx. 32.7 sq. metres (352.0 sq. feet)



Bedroom 2
12'2" x 9'1"
3.70 x 2.77m

Landing

Principal Bedroom
13'0" x 12'2"
3.96 x 3.70m



Thorntons

The right way to move

Our Branches

ANSTRUTHER

5A Shore Street, Anstruther, KY10 3EA
01333 310481
anstrutheaa@thorntons-law.co.uk

BONNYRIGG

3-7 High Street, Bonnyrigg, EH19 2DA
0131 663 7135
bonnyriggea@thorntons-law.co.uk

DUNDEE

Whitehall House, 33 Yeaman Shore
Dundee DD1 4BJ
01382 200099
dundeeea@thorntons-law.co.uk

FORFAR

53 East High Street, Forfar, DD8 2EL
01307 466886
forfarea@thorntons-law.co.uk

PERTH

7 Whitefriars Crescent, Perth, PH2 0PA
01738 443456
perthea@thorntons-law.co.uk

ARBROATH

165 High Street, Arbroath, DD1 1DR
01241 876633
arbroathea@thorntons-law.co.uk

CUPAR

49 Bonnygate, Cupar, KY15 4BY
01334 656564
cupareaa@thorntons-law.co.uk

EDINBURGH

Citypoint, 3rd Floor, 65 Haymarket
Terrace, Edinburgh, EH12 5HD
0131 297 5980
edinea@thorntons-law.co.uk

MONTROSE

55 High Street, Montrose, DD10 8LR
01674 673444
montroseaa@thorntons-law.co.uk

ST ANDREWS

17-21 Bell Street, St Andrews, KY16 9UR
01334 474200
standrewsea@thorntons-law.co.uk



@ThorntonsPropertyServices



@thorntonsproperty



@ThorntonsPS

Thorntons is a trading name of Thorntons Law LLP
Regulated by The Law Society of Scotland