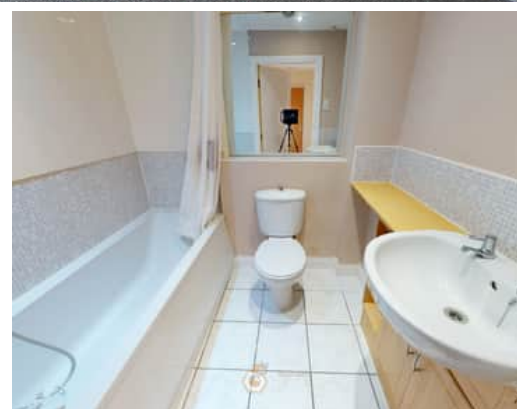


2 Bedroom(s), Flat, Leasehold

Reeves Way, Armthorpe, Doncaster.



- 3D Virtual Tour Available
- Two Bedrooms
- Kitchen
- En Suite WC to Master Bedroom
- Secure Communal Entrance
- No Chain

- Third Floor Flat
- Lounge
- Family Bathroom
- Allocated Parking and Visitor Parking
- Local Amenities, Schools and Transport Links

£100,000
For Sale

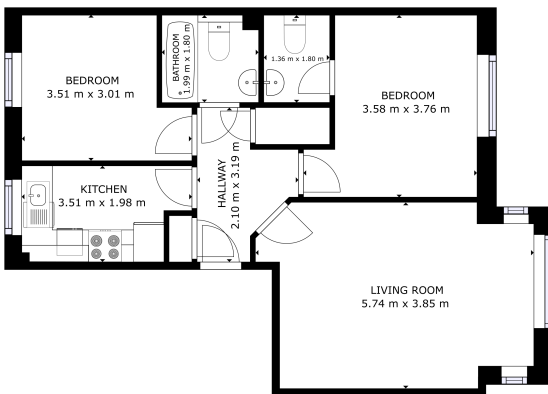
Book your viewing today Tel: 01302 247754

Owner's View

Located on the third floor, this well-proportioned two-bedroom apartment on Reeves Way, Armthorpe is offered with no onward chain, making it an ideal purchase for first-time buyers, investors, or those looking to downsize. The apartment features a spacious lounge with ample room for both living and dining furniture, along with a fitted kitchen offering good storage and worktop space. There are two bedrooms, with the master benefitting from an en suite W/C, while a family bathroom serves the remainder of the property. Externally, the apartment enjoys the benefit of allocated parking, along with additional visitor parking for convenience. Positioned within a popular residential development, Reeves Way offers good access to local amenities, transport links, and the motorway network. An excellent opportunity in a sought-after location, early viewing is recommended.

Ground Floor

Floor Plan



OFFICE INTERNAL AREA
FLOOR: 110.14 sq ft
TOTAL: 110.14 sq ft

Matterport



Lounge



Entry



Master Bedroom and En Suite WC



Kitchen





Bedroom



Family Bathroom



External

Front Aspect



Property Information

Council Tax Band - A

Utilities - Mains Gas, Mains Electricity, Mains Water

Water Meter - Yes

Tenure - Leasehold

Solar Panels - No

Space Heating System - Electric storage heaters

Approximate Heating System Installation Date -

Water Heating System - Electric immersion heated tank

Approximate Water Heating Installation Date -

Boiler Location -

Approximate Electrical System Installation Date -

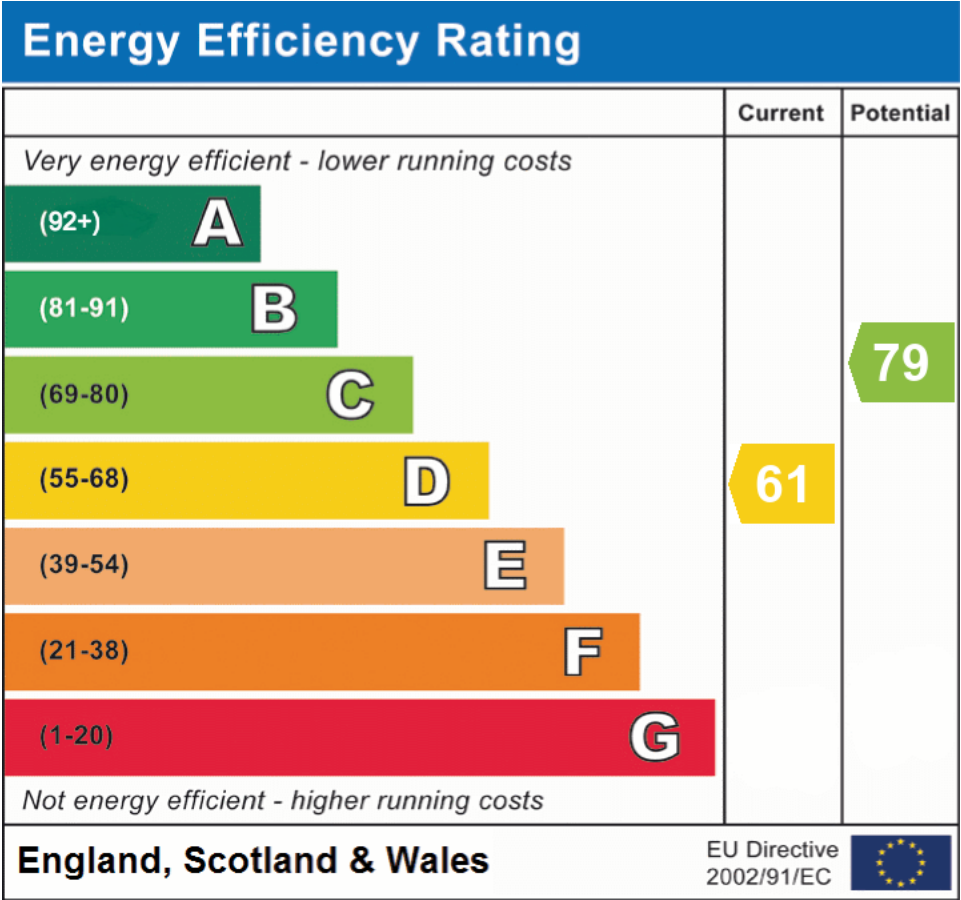
Permanent Loft Ladder - No

Loft Insulation - Yes

Loft Boarded out - Yes

Whilst every effort is made to ensure that the information contained in these particulars is reliable, they do not constitute or form part of an offer or any contract. The Property Hive accept no liability for the accuracy of the contents, and therefore they should be independently verified by prospective buyers or tenants before agreeing an offer. All measurements provided are approximate and should be verified before exchange of contracts. No appliances, fixtures or fittings have been tested and should be checked by the buyer before exchange of contracts to ensure they are in good working order.

Energy Performance Certificate



All measurements provided are approximate and should be verified before exchange of contracts. No appliances have been tested and should be checked to ensure they are in good working order.