

# HAMPTON PARK

£395,000

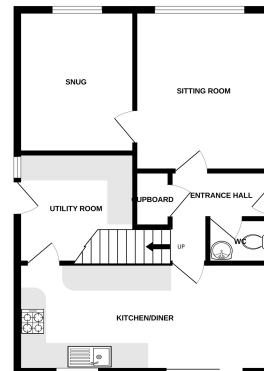


## Key Features

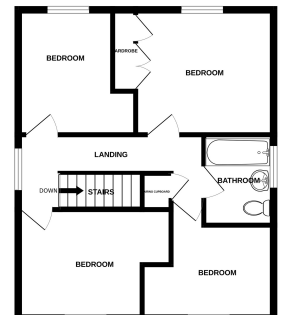
- ✓ 4 bedroom detached family home
- ✓ Kitchen/ Dining room
- ✓ Cloakroom
- ✓ Converted garage into a family room



GROUND FLOOR  
575 sq.ft. (53.3 sq.m.) approx.



1ST FLOOR  
490 sq.ft. (45.6 sq.m.) approx.



TOTAL FLOOR AREA: 1,065 sq.ft. (99.0 sq.m.) approx.  
\*Ask with Measure-Tool