

FOR SALE

£1,150,000 Freehold



197 Churchgate Road, Cheshunt, Waltham Cross, Hertfordshire. EN8 9EJ

Head Office
7, Turners Hill, Cheshunt, Waltham Cross, EN8 8NQ

01992 637777
info@woodhouseproperty.co.uk

ABOUT THE PROPERTY

Woodhouse are pleased to offer this substantial family home, offering over 3,500sq set over 3 floors. With no onward chain, move in as soon as your solicitor allows!

Beautifully presented, there is plenty of space on offer ideal for any large or multi-generational family. The Ground floor comprises an open-plan Kitchen with Breakfast Room & Dining Room, a further Lounge-Diner, and 2 further Reception Rooms (one with Cloakroom).

To the 1st Floor are 6 x Bedrooms (5 of them with Ensuites, and the Master also with a Dressing Room). To the top Floor, a 7th Bedroom with Ensuite, and the Cinema Room.

Externally there is a large West-facing Garden (so plenty of natural daylight incoming). Further benefits include a Detached Double Garage (converted into Gym with double Shower), heated Swim Spa, solar panels, and ample parking to the front.

Churchgate is based in West Cheshunt, with plenty of local amenities. There are local shops on your doorstep, and excellent road links such as the A10 & M25 minutes away. You can walk / drive to Brookfield Centre & the High Street, and both Cheshunt & Cuffley Stations are approx. 10 minutes drive away. There are fantastic and coveted schools nearby, both Primary & Secondary.

Contact Woodhouse today to come and see for yourself what this premium and imposing home has to offer you and your family! Viewings available 7 days a week.

FEATURES

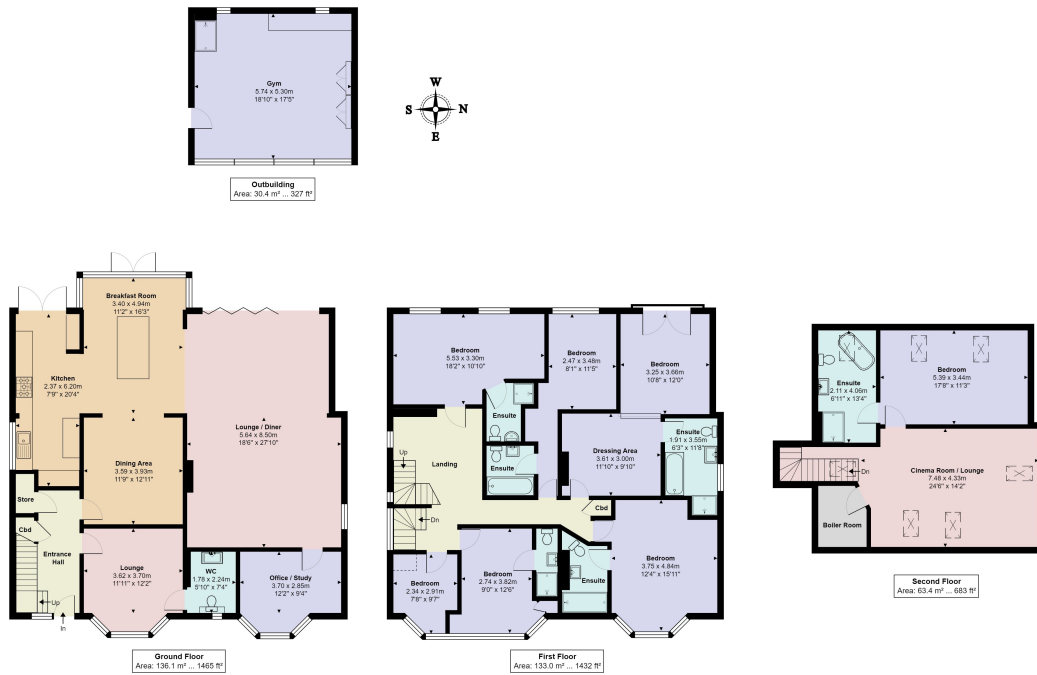
- NO ONWARD CHAIN
- Substantial Detached Home
- 7 x Bedrooms
- 6 x En-suites
- Multiple Receptions
- Cinema Room
- Detached Double Garage / Gym /Utility
- Heated Swim Spa
- Large West-Facing Garden
- Ample Parking with wrap-around Driveway
- Close to desirable schools & amenities



ROOM DESCRIPTIONS



FLOORPLAN



Churchgate Road, Cheshunt, EN8 9EJ

Total Area: 332.5 m² ... 3579 ft² (excluding Garden & Gym)
All measurements are approximate and for display purposes only

EPC

