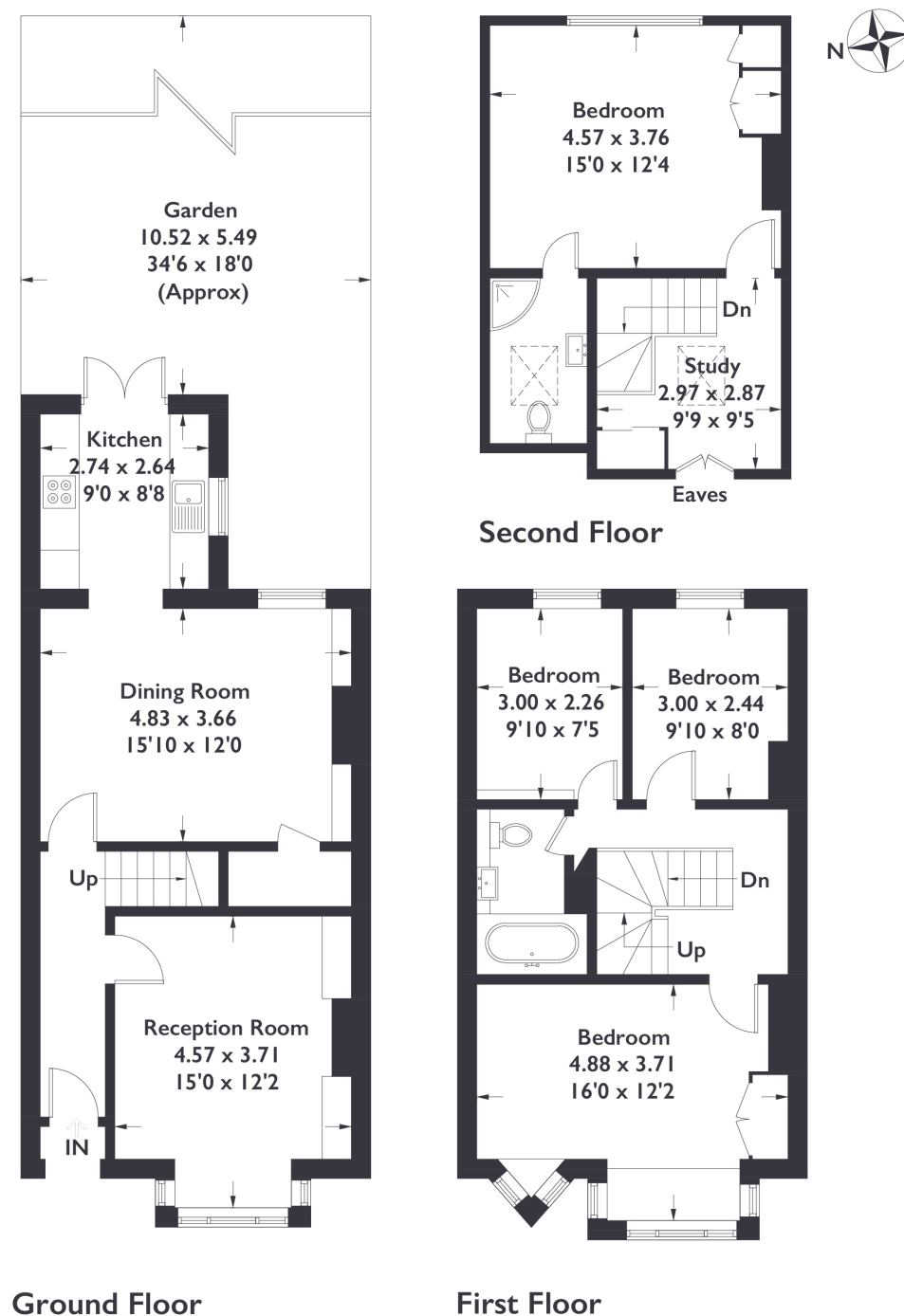


Dudley Gardens, W13

Approximate Gross Internal Area = 126 sq m / 1357 sq ft



Measured in accordance with RICS Code of Measuring Practice. To be used for identification and guidance purposes only. Whilst every care is taken in the preparation of this plan, please check all dimensions, shapes and compass bearings before making any decisions reliant upon them.



4 BEDROOM HOUSE

Dudley Gardens, W13
£950,000

Offered on a chain free basis and conveniently located within the heart of Northfields, this Edwardian style property offers period features, spans over 1,300sq ft and is arranged over three floors.

FEATURES

- Chain Free
- Edwardian House
- Period Features
- Off Street Parking For One Car
- Well Maintained Private Garden
- Two Reception Rooms
- Fielding Primary School Nearby
- West Ealing Station Nearby
- Energy Rating: D



4 BEDROOM HOUSE

Dudley Gardens, W13

£950,000

A key aspect of this property is its large private driveway.

The front reception room is filled with natural light with the addition of a period fireplace and large bay window. With a bright second reception room, the kitchen diner provides a large, contemporary space with under stair storage and french doors leading out to the rear garden. With a south-east facing garden you'll find sunshine flooding through in the early morning into the late afternoon. The first floor offers a bright principle bedroom to the front of the property with floor-to-ceiling storage. Two further bedrooms and a family bathroom complete the first floor. The loft has been tastefully converted to accommodate a separate study area with the addition of a large double bedroom and en-suite shower room.

You are a short walk away from all of the amenities Northfield Avenue has to offer. The Ofsted Outstanding Fielding Primary School makes this location ideal for families with Northfields station (Piccadilly Line) and West Ealing Station (new Elizabeth Line) allowing you to be only a short trip away from central London.

