

# AUDEN CRESCENT

£495,000

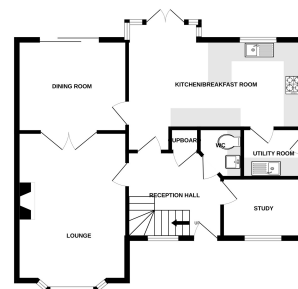


## Key Features

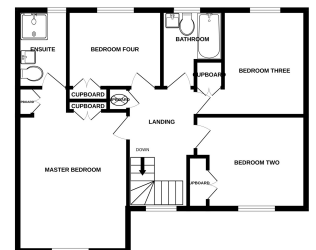
- ✓ Set in a popular residential location.
- ✓ Four Double Bedrooms.
- ✓ Private Enclosed Garden.



GROUND FLOOR  
729 sq.ft. (67.7 sq.m.) approx.



1ST FLOOR  
714 sq.ft. (66.4 sq.m.) approx.



TOTAL FLOOR AREA: 1443 sq.ft. (134.1 sq.m.) approx.  
View with Metre+ 01222