

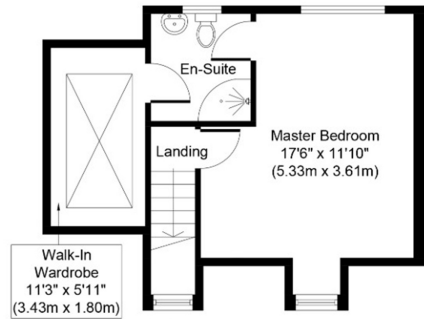


26 Pear Tree Road, Ashford, Surrey, TW15 1PW

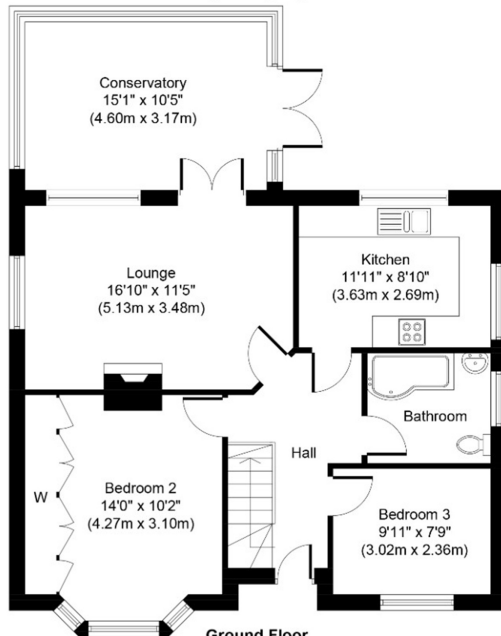
STUNNING DETACHED CHALET BUNGALOW IN MUCH SOUGHT AFTER ROAD IDEALLY LOCATED FOR ASHFORD TOWN CENTRE & LOCAL SHOPS. The property benefits from a spacious lounge, modern fitted kitchen, conservatory, three well-proportioned bedrooms (with en-suite to Bedroom 1 & walk-in wardrobe), further bathroom, secluded rear garden, off-street parking and double garage. Viewings Highly Recommended!

ROOM DESCRIPTIONS

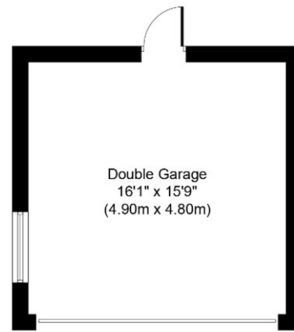
FLOORPLAN



First Floor
Approximate Floor Area
333 Sq. ft.
(30.9 Sq. m.)



Ground Floor
Approximate Floor Area
855 Sq. ft.
(79.4 Sq. m.)



(Not Shown In Actual
Location / Orientation)
Approximate Floor Area
252 Sq. ft.
(23.5 Sq. m.)

Whilst every attempt has been made to ensure the accuracy of the floor plan contained here, measurements of doors, windows, rooms and any other items are approximate and no responsibility is taken for any error, omission, or mis-statement. This plan is for illustrative purposes only and should be used as such by any prospective purchaser or tenant. The services, systems and appliances shown have not been tested and no guarantee as to their operability or efficiency can be given.

Copyright V360 Ltd 2021 | www.houseviz.com