



FELLS GULLIVER
ESTATE AGENTS

023 8028 4411
www.fellsgulliver.com

Plot 10 (28 Glasshayes Way) Lyndhurst Park, Glasshayes Way, Lyndhurst SO43 7ET

£350,000

- Adjacent to open Forest
- Landmark new development
- Open plan kitchen / living room
- Integrated appliances including a dishwasher and washer / dryer
- Lift to all floors
- 10 year warranty
- Second floor apartment
- Allocated parking space
- Bespoke elegant kitchen with Quartz work surfaces
- Incentives available





2



2



1

This two bedroom apartment is on the second floor with dual aspect views in the principal bedroom. The apartments are finished to a high specification with underfloor heating throughout, LED downlighting to all areas and Roseview Ultimate Rose Vertical Sliding Woodgrain PVC Sash Windows.

The elegant shaker style kitchen features soft close hinges and self closing drawers as well as Quartz work surfaces. You have everything you need to move straight in with integrated appliances including an electric fan oven, microwave, induction hob, fridge/freezer, dishwasher and combination washer/dryer.

An ensuite shower room is in the principal bedroom and includes Duravit sanitaryware with Vita Integra Vanity drawer units. The lounge area and bedrooms are fitted with carpets, whilst all wet areas, including the kitchen, feature contemporary LVT (Luxury Vinyl Tile) flooring.



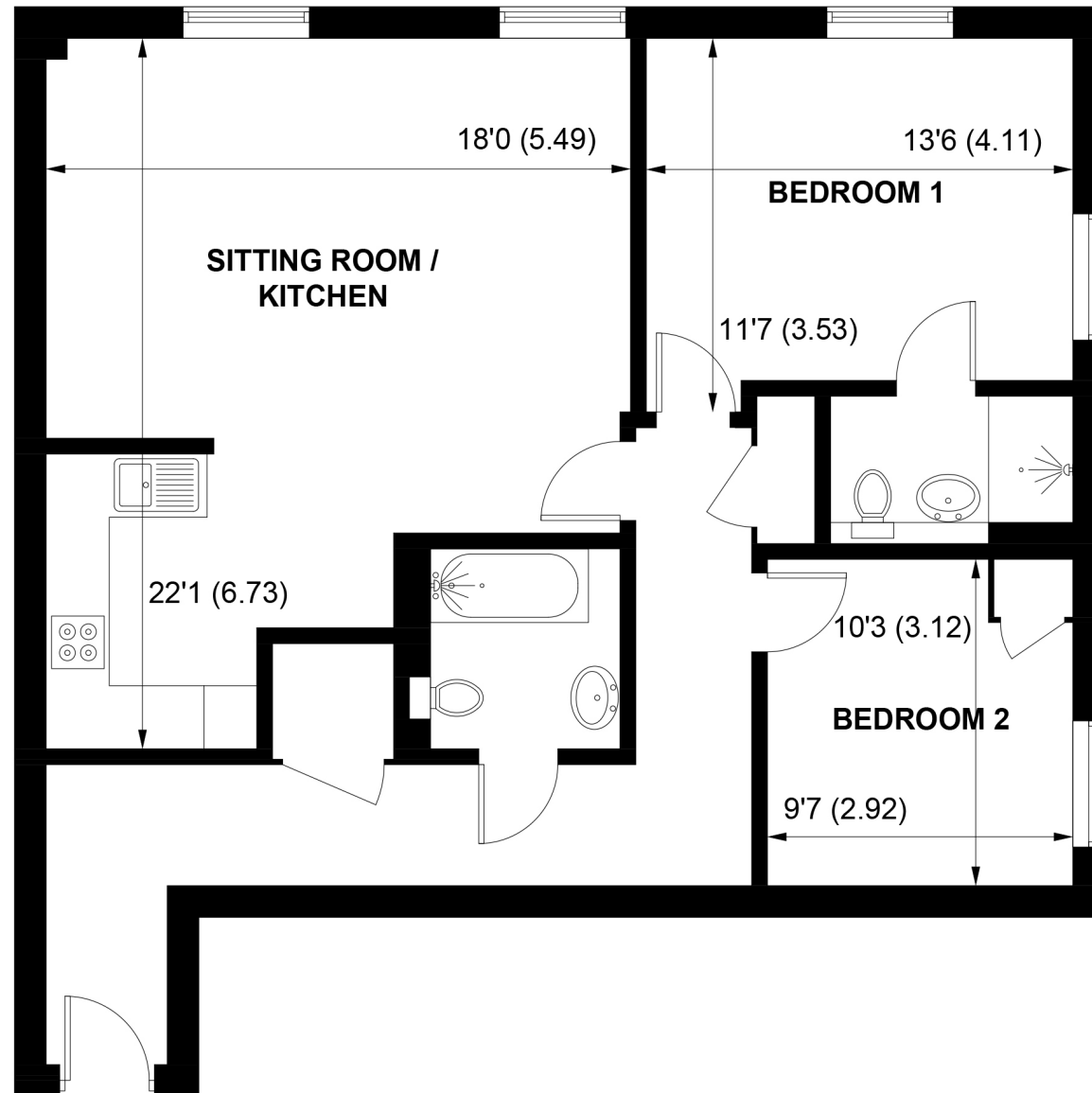
A stunning landmark new development within the capital of the New Forest. A beautiful collection of apartments and houses built by the esteemed Hoburne Developments. Located on Lyndhurst High Street in the New Forest National Park, not only will Lyndhurst Park offer the tranquillity of country living, it also has the added convenience of amenities just steps away. With a range of independent boutiques, gift shops and eateries on your doorstep and open forest close by, you will have the best of both worlds. Known as the capital of the New Forest, Lyndhurst also has the benefit of a luxury hotel & spa, infant school, doctors, dental practice and is just a short stroll from the open forest and Bolton's Bench. It is often the focal point for people relocating to the area to start their property search. With free roaming ponies, deer, pigs and donkeys, it really exudes the ultimate in country living.

These stunning apartments also have access to the landscaped communal grounds. For more information or to arrange a viewing, please get in touch with Fells Gulliver Lyndhurst.









SECOND FLOOR

APPROXIMATE GROSS INTERNAL AREA = 867 SQ FT / 80.6 SQ M

NOT TO SCALE (For illustrative purposes only as defined by RICS Code of Measuring Practice) 2025 ©
Produced by Emzo Marketing



FELLS GULLIVER
ESTATE AGENTS

023 8028 4411
www.fellsgulliver.com