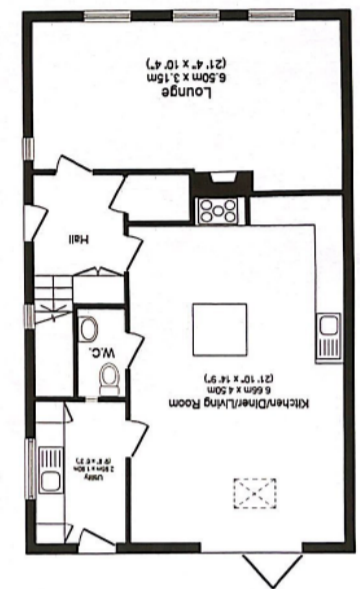
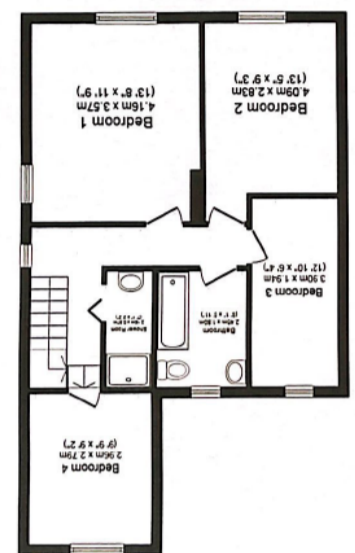


Floor area 71.6 sq.m. (771 sq.ft.) approx



Floor area 58.8 sq.m. (632 sq.ft.) approx



Floor area 18.4 sq.m. (198 sq.ft.) approx



21 Straylands Grove, York YO31 1EB

Situated on a generous plot with views to the rear overlooking The Stray is this well maintained and extended semi detached home situated just off Stockton Lane. This wonderful home briefly comprises; entrance hallway, bright lounge and a large living / dining / kitchen with bi fold doors to the rear. To the first floor are four good sized bedrooms, a shower room and a modern house bathroom.

To the rear, the property benefits from an enclosed garden complete with mature borders, gravel, patio and lawned areas perfect for soaking up the sun and to the front is a gravelled driveway for ample off street parking. Ready to move straight in and enjoy, this property is likely to be of high interest levels and so early viewing is recommended to avoid disappointment.

- Extended Semi Detached House
- Views over The Stray
- Well Maintained Gardens
- Large Driveway
- Lounge
- Large Living / Dining / Kitchen
- Four Bedrooms
- Modern Bathroom

Travelling on Stockton Lane from Heworth roundabout. Take the left hand turning onto Woodlands Grove and proceed round the corner to the left on to Straylands Grove where the property is situated on the right hand side can be identified by our for sale board.

Stockton Lane area situated on the outskirts of York and being accessible for the City Centre and A64 that in turn leads to the motorway network. Local shops can be found nearby in Heworth that offers a range of local shops to include Costcutters and Deli. A wider range of facilities can be found at the Monks Cross Retail Park, Vangarde and in the Centre. There are bus routes into the centre and a local primary school nearby.

