



**FOR SALE**

## Athelstone Road, Harrow HA3 5NY

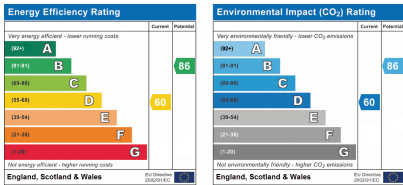
\*\*\* BUY TO LET ONLY \*\*\*

Mischa & Co are offering this new to the market 3 bedroom end of terrace property. This home benefits from a large through lounge, extended kitchen, downstairs WC, large rear garden, off street parking and is unfurnished.

The property is conveniently located within walking distance to excellent local amenities transport and shopping facilities including Harrow & Wealdstone Bakerloo and London Overground station. Currently Let for £2350 pcm.

Call today to book your tour!!

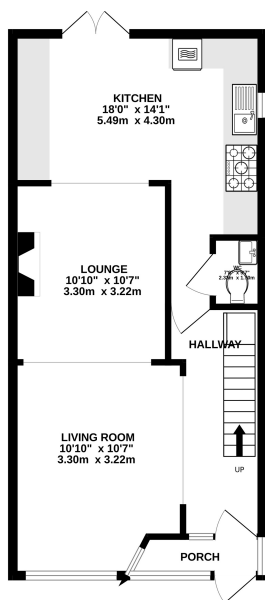
Council Tax Band D & EPC Rating D(60).



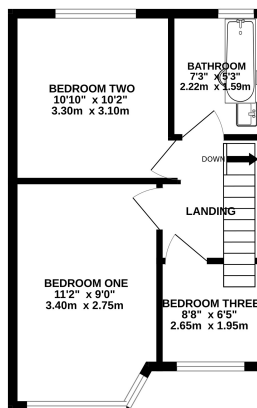
# £534,950 Freehold

## Floorplan

GROUND FLOOR  
507 sq.ft. (47.1 sq.m.) approx.



1ST FLOOR  
353 sq.ft. (32.8 sq.m.) approx.



TOTAL FLOOR AREA: 860 sq.ft. (79.9 sq.m.) approx.

While every attempt has been made to ensure the accuracy of the floorplan contained herein, measurements of doors, windows, stairs and any other items are approximate and no responsibility is taken for any error, omission or mis-statement. This plan is for illustrative purposes only and should be used as such by any prospective purchaser. The services, systems and appliances shown have not been tested and no guarantee as to their operation or efficiency can be given.  
Made with Metropix (2024)



NB: Please note that all fittings, kitchen appliances and heating systems have not been tested by Mishca & Co Sales & Lettings. Whilst we endeavour to make our sales details accurate and reliable. Room sizes should not be relied upon for carpets and furnishings. If there is any point, which is of particular important to you, please contact our office and we will be pleased to verify any information for you. Do so particularly if contemplating travelling some distance to view this property.