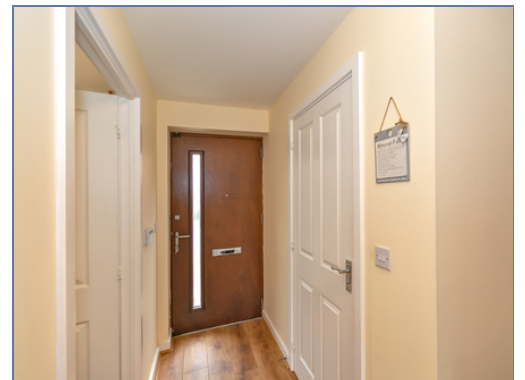




64 Poppy Avenue, Broughton, Milton Keynes, Buckinghamshire, MK10 7AS

£317,500 Freehold

- Highly desirable area
- Three Double Bedrooms
- Accommodation over three floors
- Lounge diner
- Kitchen breakfast room
- En suite to master bedroom
- South Facing Rear Garden
- Single Garage
- Off-road parking for 2 cars
- Energy rating B
- EPC Rating





GROUND FLOOR

Entrance Hall

Doors leading to:

Cloakroom

Fitted to comprise two piece suite

Kitchen Breakfast Room

11' 1" x 7' 7" (3.38m x 2.31m)

Lounge Diner

15' 8" x 14' 9" (4.78m x 4.50m) narrowing to 11' 5"

FIRST FLOOR

First Floor Landing

Doors leading to:

Bedroom Two

14' 9" x 12' 10" (4.50m x 3.91m) narrowing to 9' 8"

Bedroom Three

14' 1" x 7' 10" (4.29m x 2.39m)

Family Bathroom

Fitted to comprise three piece suite

SECOND FLOOR

Second Floor Landing

Leading to:

Master Bedroom

12' 10" x 11' (3.91m x 3.35m)

En Suite

Fitted to comprise three piece suite

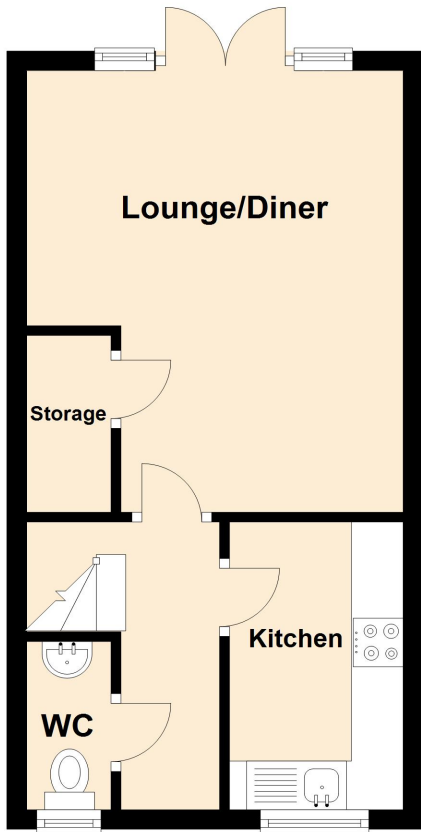
EXTERIOR

Rear Garden

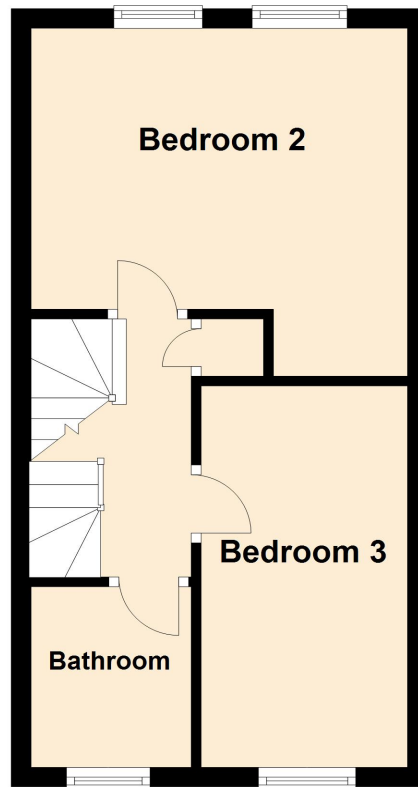
Single Garage

Off-road parking for 2 cars

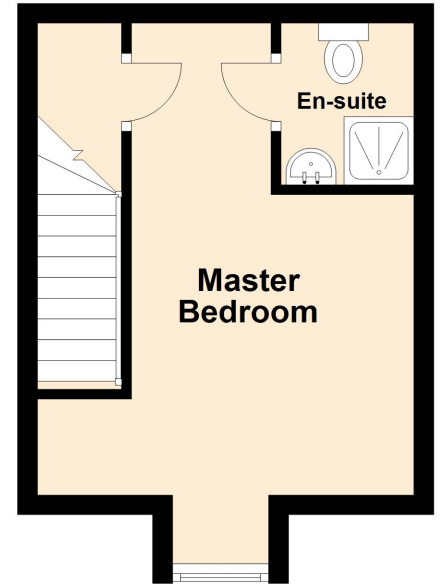
Ground Floor



First Floor



Second Floor



Floor plans are for layout purposes only. Measurements are approximate and subject to inaccuracies
Plan produced using PlanUp.