



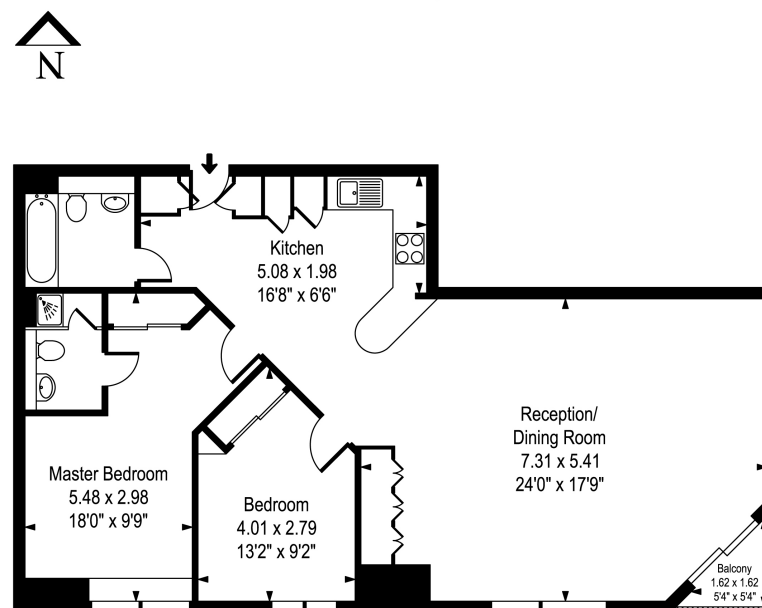
## Godfree Court 35 Long Lane, London SE1 4PS

A beautifully presented 912 sq ft, dual aspect, two bedroom, two bathroom apartment with balcony and secure allocated parking located within a modern development just off Borough High Street enjoying close proximity to Borough Market, London Bridge station, Bankside and Bermondsey Street.

Occupying part of the third floor of a modern development, this stylish contemporary apartment comprises entrance area with storage cupboards, impressive dual aspect reception room with door providing access to private balcony, dining area, open plan fitted kitchen with stone work tops and integrated appliances, master bedroom with en-suite shower room and fitted wardrobes, guest bedroom two with fitted wardrobes and family bathroom. The apartment has been enhanced throughout in recent years and benefits from a high specification interior including recessed lighting, ceiling speakers, secondary glazing with blackout blinds, renovated kitchen and bathroom suites. Borough Market, Bankside, London Bridge and Bermondsey Street are all moments away.

- Godfree Court SE1
- Dual Aspect Apartment
- Two Bathrooms
- High Specification Interior
- 912 Sq Ft
- Two Double Bedrooms
- Private Balcony
- Excellent Location

### Godfree Court 35 Long Lane, London, SE1 2 Bedroom Apartment



Third Floor

Approx Gross Internal Area **912 Sq Ft - 84.77 Sq M**

Whilst every attempt has been made to ensure the accuracy of the floor plan contained here, measurements of the doors, windows, rooms and any other items are approximate and no responsibility is taken for any error, omission, or mis-statement. This plan is for illustrative purposes only and should be used as such by any prospective purchaser. The services, systems and appliances shown have not been tested and no guarantee as to their operability or efficiency can be given.







