



87 Brookbridge Lane, Datchworth, Knebworth, Hertfordshire, SG3 6SZ

£625,000

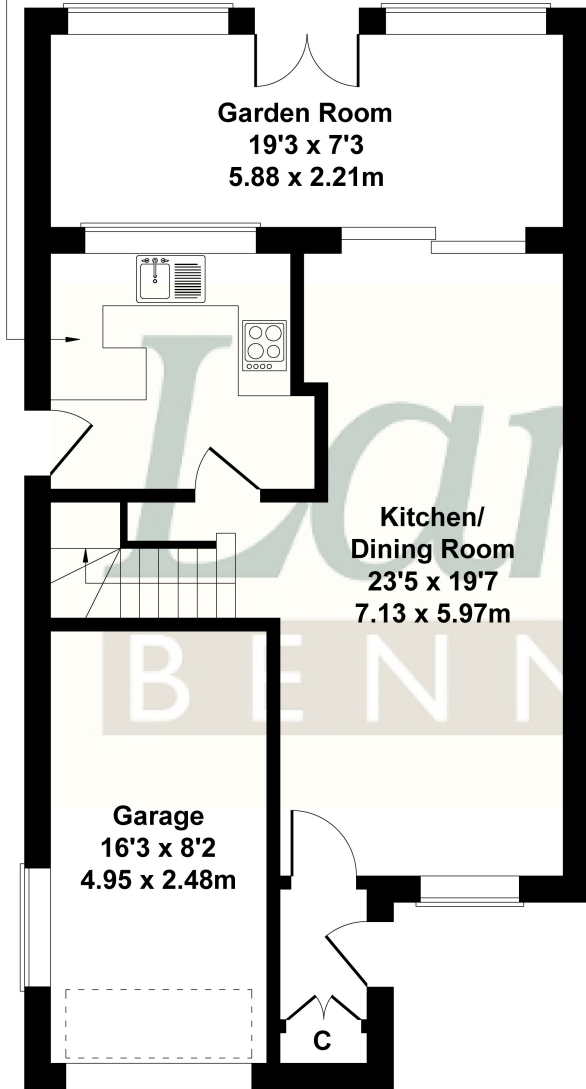
Three bedroom detached home situated in the heart of this desirable village just a few minutes walk of the well-regarded village pub and eatery, village stores, coffee shop and Datchworth Green with Cricket pavilion and Tennis courts. Bright and spacious accommodation and scope to extend (if required). One of the main features of this property is the generous garden with amazing views over farmland to the rear. For those that work from home there is a 5m x 3m log cabin with light and power. Off road parking is provided by a driveway and garage.



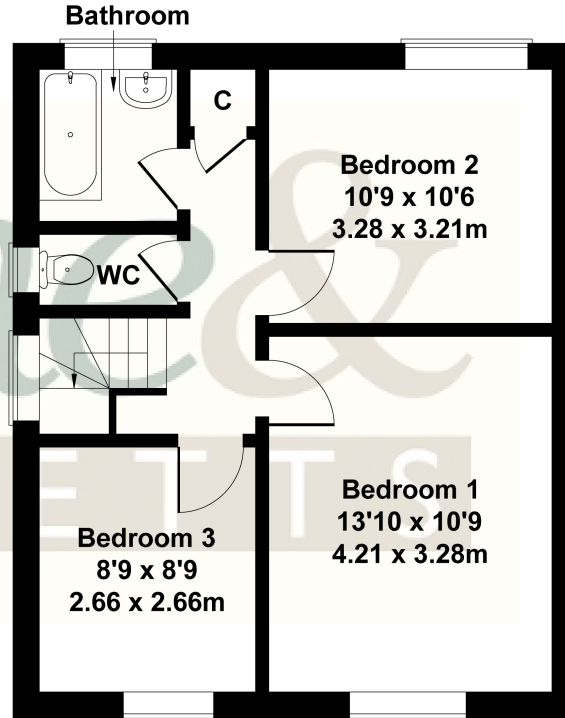
87 Brookbridge Lane Datchworth SG3 6SZ

Approximate Gross Internal Area
1119 sq ft - 106 sq m

Kitchen
9'11 x 8'10
3.03 x 2.70m



GROUND FLOOR



FIRST FLOOR

Not to Scale. Produced by The Plan Portal 2024
For Illustrative Purposes Only.

- DETACHED HOUSE IN HEART OF VILLAGE
- BRIGHT AND SPACIOUS ACCOMMODATION
- LOUNGE/DINING ROOM + GARDEN ROOM
- THREE BEDROOMS
- MATURE & PRIVATE GARDEN
- AMAZING VIEWS OVER OPEN COUNTRYSIDE
- WITHIN A FEW MINUTES WALK OF THE VILLAGE STORE + COFFEE SHOP + TWO VILLAGE PUBS
- OFF ROAD PARKING + GARAGE
- 5m x 3m LOG CABIN
- CLOSE TO DATCHWORTH GREEN + COUNTRYSIDE WALKS

