



KUBIE GOLD
ASSOCIATES

WATERDALE MANOR HOUSE HAREWOOD AVENUE MARYLEBONE NW1



- LARGE ONE BED FLAT
- PENTHOUSE APARTMENT
- WOOD FLOOR THROUGHOUT

- 24 HOUR CONCIERGE
- SECURE UNDERGROND PARKING
- AVAILABLE 4TH OCTOBER

£3,141 pcm

SALES, LETTINGS & PROPERTY MANAGEMENT

Tel:

020 7563 7272

36 Ivor, Regents Park, London, NW1 6EA

Email: info@kubie-gold.co.uk Website: www.kubie-gold.co.uk

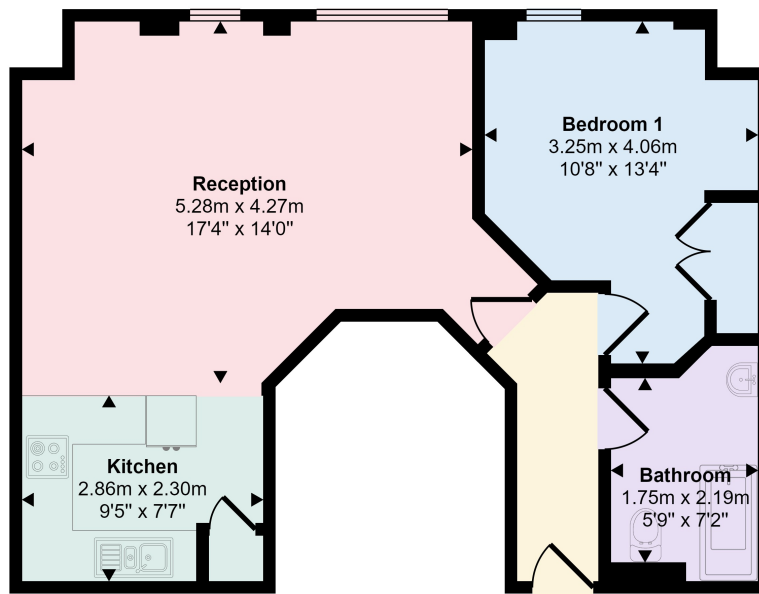
Kubie Gold Associates is the trading name of Kubie Gold Associates Ltd
Company Registration No. 7271501 registered in England and Wales



Waterdale Manor House Harewood Avenue, NW1

Well presented large one bedroom penthouse apartment in well managed Portered block, large reception with wood floors and vaulted high ceilings, open plan fully fitted kitchen, double bedroom with fitted wardrobe giving ample storage, full family bathroom, set on the top floor with lift, property boasts wood floors throughout, property benefits from 24 hour concierge and secure underground parking, situated close to the open spaces of Regents Park and both Marylebone and Baker Street Tube Stations, available 4th October.

Approx Gross Internal Area
48 sq m / 520 sq ft



Floorplan

This floorplan is only for illustrative purposes and is not to scale. Measurements of rooms, doors, windows, and any items are approximate and no responsibility is taken for any error, omission or mis-statement. Icons of items such as bathroom suites are representations only and may not look like the real items. Made with Made Snappy 360.

Local Authority:

Westminster

Tax Band:

Band G

Energy Efficiency Rating		Current	Potential
Very energy efficient - lower running costs			
(92+)	A		
(81-91)	B		
(69-80)	C	70	71
(55-68)	D		
(39-54)	E		
(21-38)	F		
(1-20)	G		
Not energy efficient - higher running costs			
England, Scotland & Wales		EU Directive 2002/91/EC	

