



Beaulieu
Estates
For Sale

BEAULIEU
ESTATE AGENTS



8 Multon Lea, Beaulieu Park, Chelmsford, Essex CM1 6EF
£875,000 - Freehold



PROPERTY DESCRIPTION

BUILT TO THE 'YORK' HOUSE TYPE BY COUNTRYSIDE PROPERTIES IN THE ORIGINAL PART OF BEAULIEU PARK, IS THE SPACIOUS AND VERSATILE FOUR BEDROOM DETACHED HOUSE SET OVER TWO FLOORS. DOUBLE GARAGE. STUDY. LIVING ROOM. DINING ROOM. KITCHEN/BREAKFAST ROOM. LOTS OF POTENTIAL!

This property is an impressive, well-planned family home. The ground floor offers a well-designed kitchen featuring integrated appliances and a Range Cooker, there's also a separate utility room with side access to the garden & Log Cabin, a dining area plus Study and a separate living room opening onto the rear garden – making this the ideal family home!

The first floor offers four double bedrooms, one benefiting from an ensuite shower-room. The family bathroom is a three-piece suite. This floor also offers an impressive master suite including a large dressing area with built in wardrobe and an ensuite four-piece bathroom.

This property also includes a double garage with driveway and Log Cabin!

A rare opportunity to acquire a plot of this size on Beaulieu park, subject to planning consent the home can be extended not only to the side and rear but the huge loft space allows for the creation of 2 additional bedrooms and bathrooms.

Beaulieu Park is ideally situated with excellent walkways, cycle paths and bus routes into Chelmsford Town centre where excellent shopping facilities can be found including the recently opened Bond Street Development with the new John Lewis department store amongst other shops and restaurants. Multon Lea itself is also within walking distance to Sainsbury's super store and will be within very easy walking distance to the proposed Beaulieu Park Train Station. Beaulieu Square with it's doctors surgery, Churchills fish & chips, Domino's, Costa and other local various other local amenities is also just a short walk.

Call today to arrange your viewing on this beautiful home.



Entrance Hall – 12'11 x 10'6

WC

Study- 12'9 x 11'6

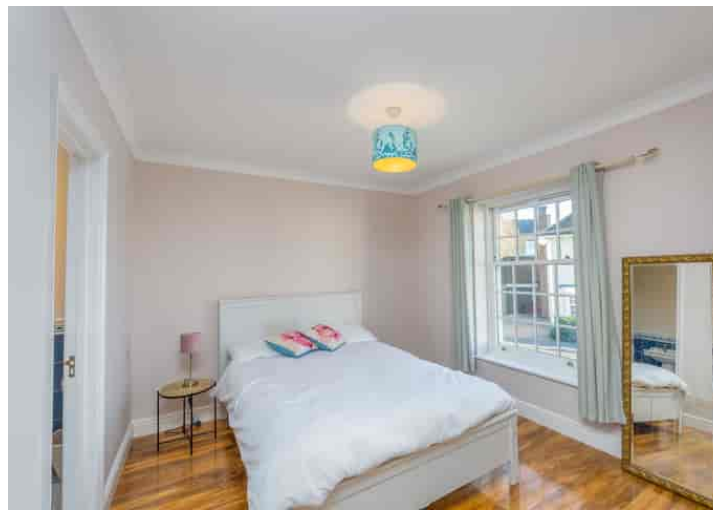
Dining Room – 12'9 x 10'2

Lounge- 18'5 x 14'8

Kitchen/Diner – 18'8 x 17'1

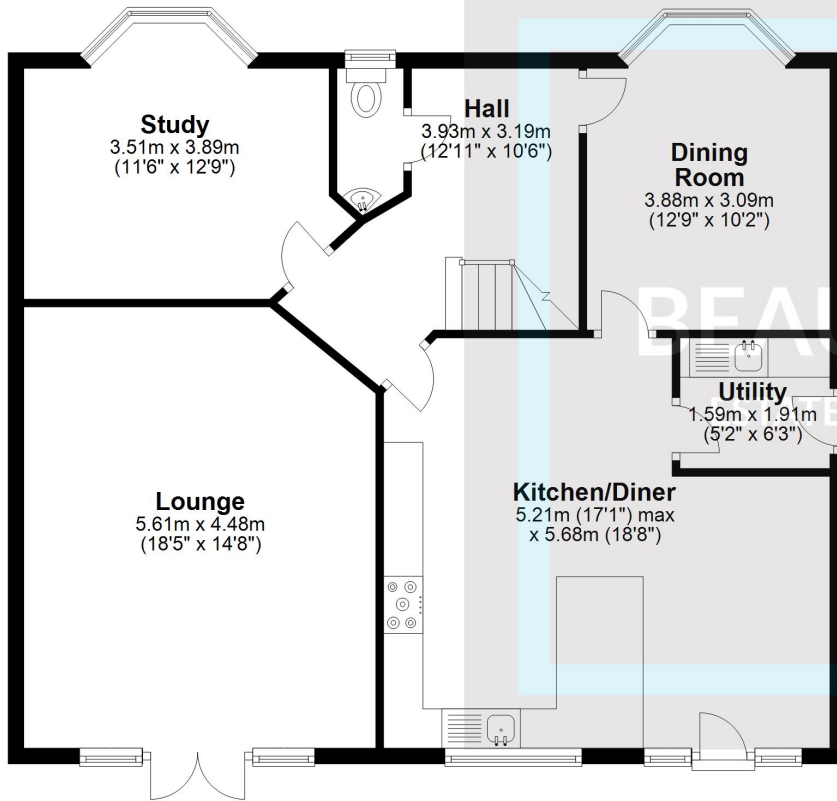
Utility Room – 6'3 x 5'2

Double Garage



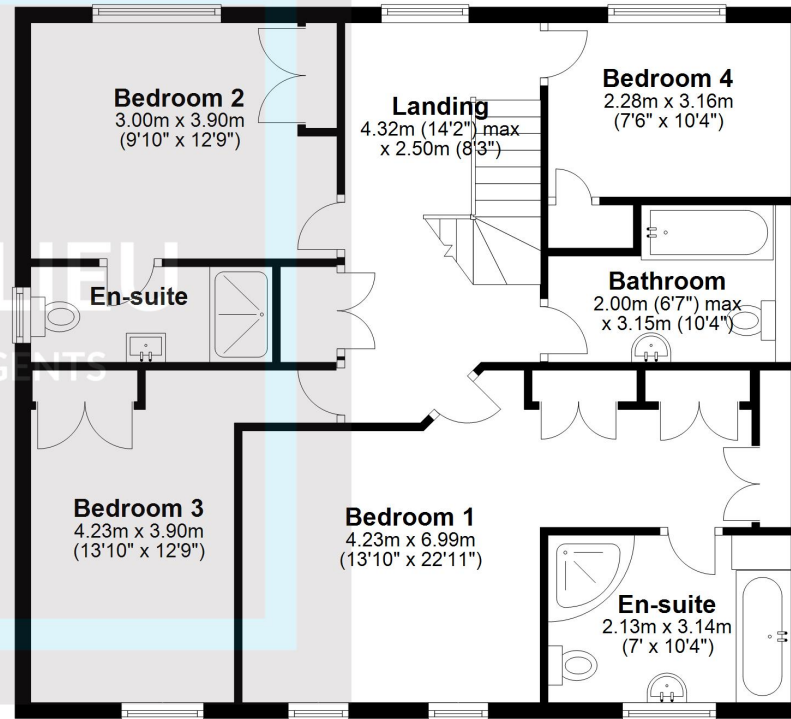
Ground Floor

Approx. 89.0 sq. metres (958.5 sq. feet)



First Floor

Approx. 84.4 sq. metres (908.1 sq. feet)



Total area: approx. 173.4 sq. metres (1866.6 sq. feet)