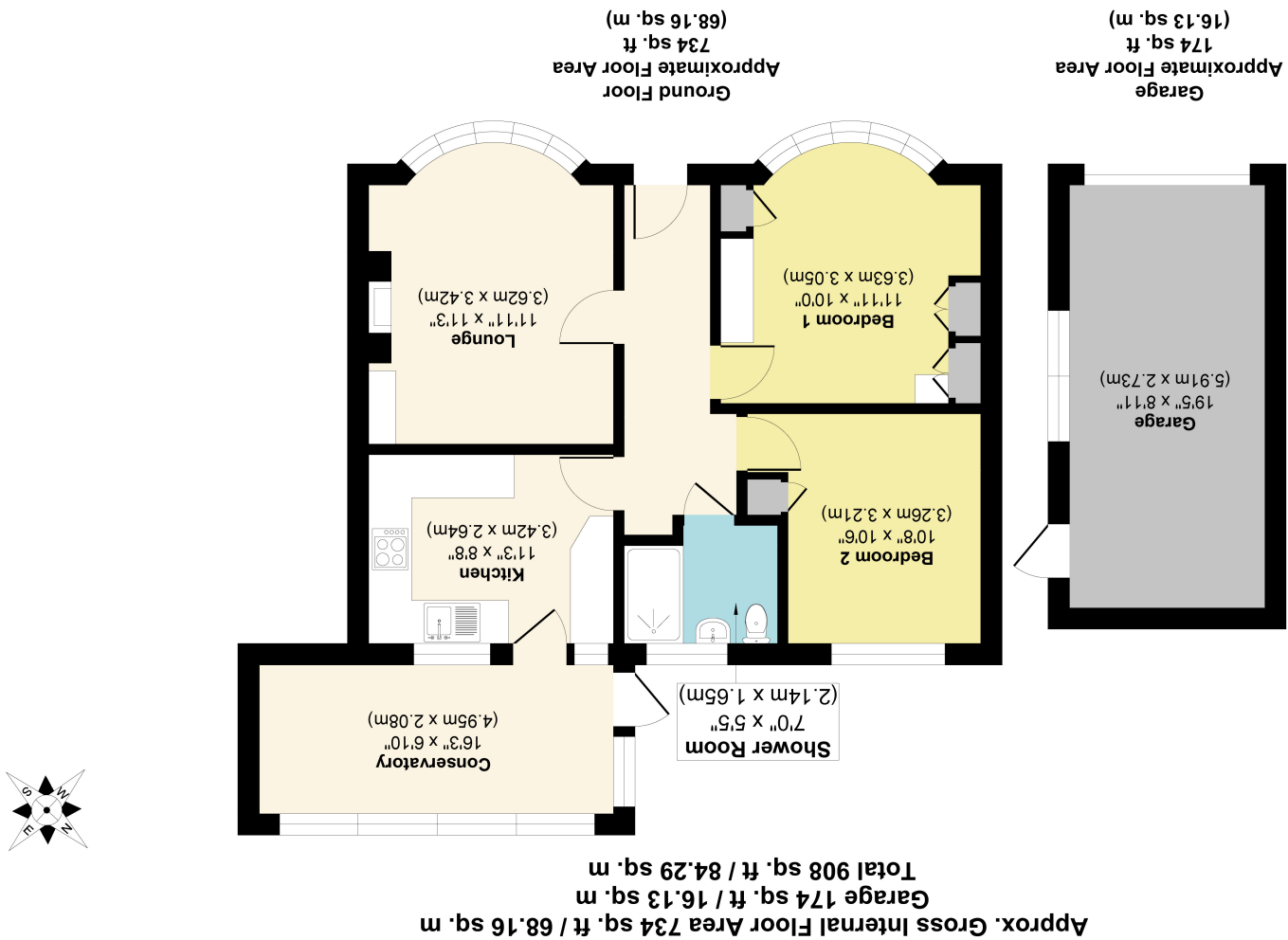


Illustration for identification purposes only, measurements approximate, not to scale.  
Copyrighted and Produced by MS Property Marketing.





## 26 Howard Link, York YO30 5UU

Located in Rawcliffe and offered for sale with the benefit of no onward chain is this bright and spacious detached bungalow. Boasting an entrance hallway, large living room with feature fireplace and bright bay window, a double bedroom with fitted wardrobes and bay window, second double bedroom over looking the rear garden, a well equipped kitchen, conservatory and a wet room.

Externally the property benefits from a pleasant block paved driveway for ample off street parking, a detached garage and a generous sized landscaped rear garden. Offering lots of potential to improve and the possibility to extend (STPP), we feel this property will attract high interest levels so early viewing is advised.

- No Onward Chain
- Detached Bungalow
- Two Bedrooms
- Large Garden
- Oozing Potential
- Block Paved Driveway
- Conservatory
- Desirable Location
- Potential to Extend (STPP)
- Local Amenities Nearby

Travelling on the Shipton Road take the turning into Howard Drive. Howard Link will be seen on the left hand side and the property can be identified by our For Sale board on the right hand side.

Ideally placed for the A1237 and A19 plus the Centre of York. Local facilities can be found in the immediate area to include Clifton Moor retails park which includes Vue Cinema and a range of restaurants. There are local first and secondary schools plus bus routes and the park and ride.

