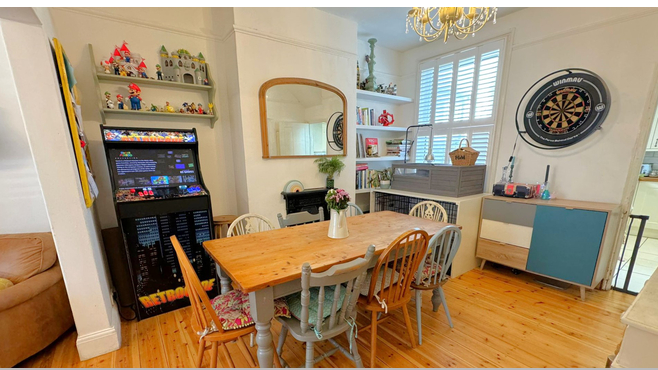
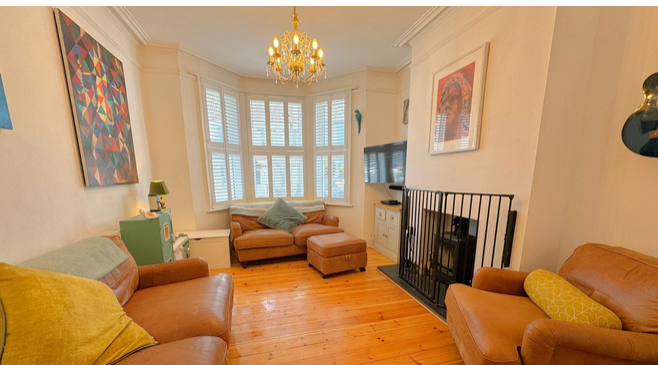




38 Windsor Road, Bexhill-on-Sea, East Sussex,
TN39 3PB

£395,000



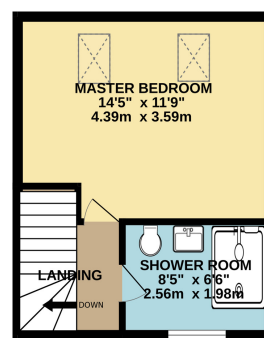
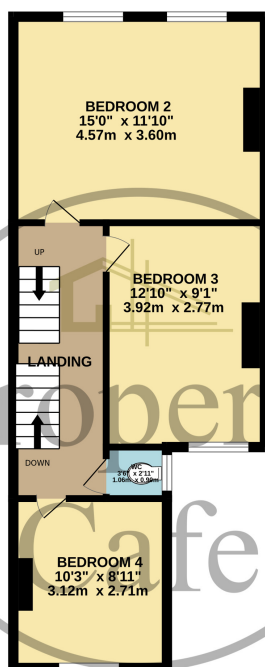
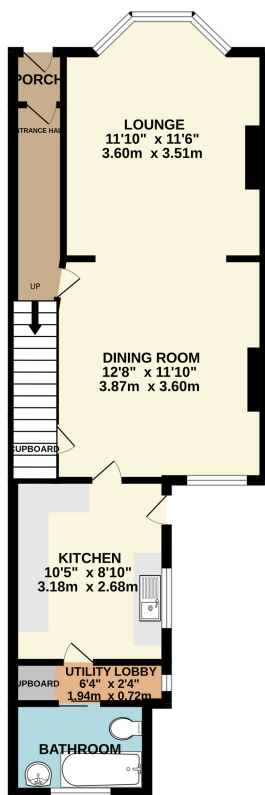
- Victorian Terraced House For Sale
- Bright & Spacious Through Lounge/Diner
- Modern Fitted Kitchen
- Four Well Proportioned Bedrooms
- Ground Floor Bathroom
- Utility Lobby.
- Modern Fitted 2nd Floor Shower Room
- 1st Floor Separate WC
- Private Rear Garden
- Immaculate Condition Throughout
- Sought After Town Centre Location
- Motivated Vendors Already Suited
- Viewing Highly Recommended



GROUND FLOOR
511 sq.ft. (47.5 sq.m.) approx.

1ST FLOOR
457 sq.ft. (42.4 sq.m.) approx.

2ND FLOOR
263 sq.ft. (24.4 sq.m.) approx.



TOTAL FLOOR AREA : 1231 sq.ft. (114.4 sq.m.) approx.

Whilst every attempt has been made to ensure the accuracy of the floorplan contained here, measurements of doors, windows, rooms and any other items are approximate and no responsibility is taken for any error, omission or mis-statement. This plan is for illustrative purposes only and should be used as such by any prospective purchaser. The services, systems and appliances shown have not been tested and no guarantee as to their operability or efficiency can be given.

Made with Metropix ©2024