

Flat 4, 6 Cherry Garden Avenue

Folkestone
CT19 5LB

£200,000 LEASEHOLD

DRAFT DETAILS... FOR SALE WITH BURNAP + ABEL... Burnap + Abel are delighted to offer this stunning first floor apartment situated just a two minute walk from Folkestone West Train Station. The property is in our opinion in superb decorative order and offers an open plan lounge/kitchen/diner, shower room and two bedrooms. Additional benefits include an allocated off road parking space, 143 year lease and no onward chain. For your chance to view call sole agent Burnap + Abel now on 01303 258590.



Entrance Hall

Lounge/Kitchen/Diner

19' 7" x 14' 5" (5.97m x 4.39m)

Shower Room

6' 7" x 5' 7" (2.01m x 1.70m)

Bedroom One

12' 8" x 9' 6" (3.86m x 2.90m)

Bedroom Two

11' 3" x 9' 5" (3.43m x 2.87m)

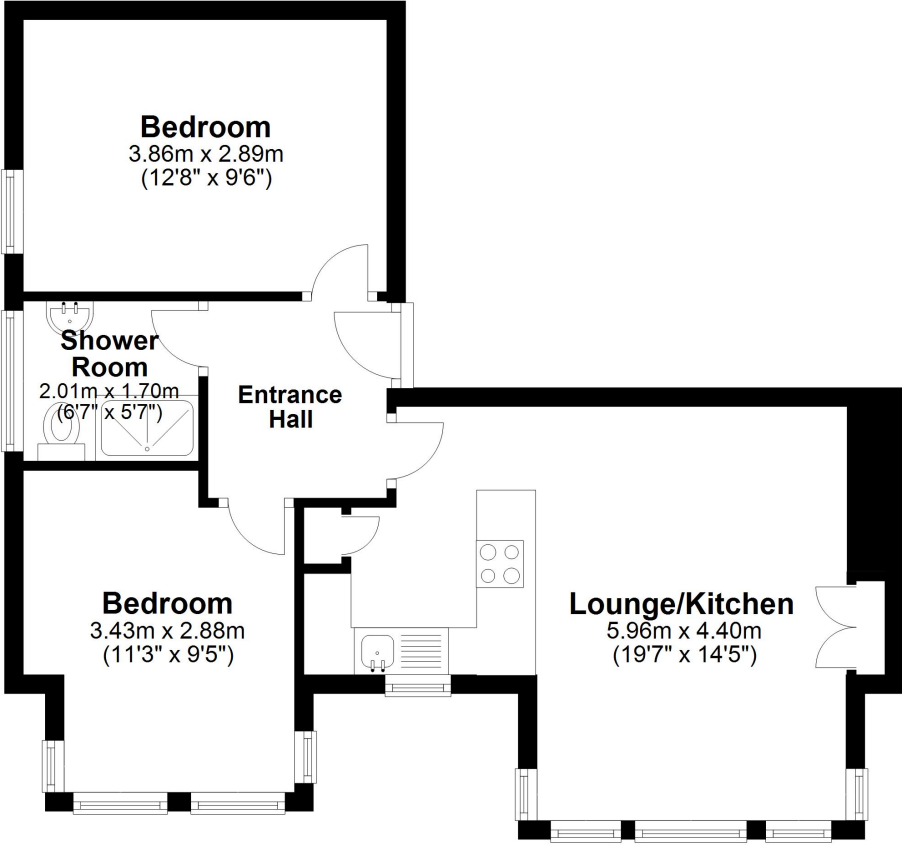
Allocated Off Road Parking Bay

Lease + Service Charge Information

The property has a lease of 143 years remaining.

The Ground Rent is £245 Per Annum and the Service Charge is £1128 Per Annum.

First Floor
Approx. 51.0 sq. metres (549.4 sq. feet)



Whilst every attempt has been made to ensure the accuracy of the floor plan contained here, measurements of doors, windows, rooms and any other items are approximate and no responsibility is taken for any error, omission or mis-statement. This plan is for illustrative purposes only and should be used as such by any prospective purchaser.
Plan produced using PlanUp.

