



22, Douglas Close
Northwich CW8 1SH

£850

www.westates.co.uk
01606 331784



- Entrance Hall
- Open Plan Living Area
- Lounge, Dining Area
- Luxury Fitted Kitchen
- Two Bedrooms
- Luxury Bathroom
- Communal Gardens
- Allocated Parking

Description

A luxury, two bedroom first floor apartment, built in 2011 and forming part of an exclusive development of mainly large detached houses close to Hartford village centre. The property is offered in excellent decorative condition with electric central heating and PVCu double glazed windows. The accommodation comprises: Entrance hall, open plan living area with lounge, dining area and luxury fitted kitchen, two double bedrooms and a luxury bathroom. Outside there are communal gardens, allocated parking and visitor parking.



Location
NEW INSTRUCTION

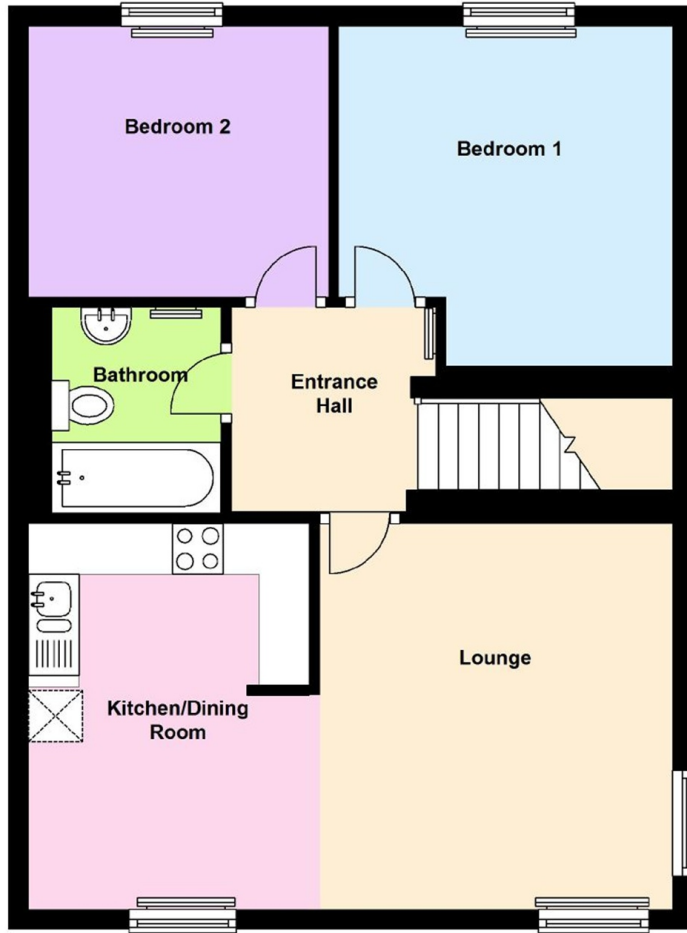
Tenure

EPC Rating:

Important Notes
Type Here



First Floor
Approx. 55.2 sq. metres (594.5 sq. feet)



Total area: approx. 55.2 sq. metres (594.5 sq. feet)



Boomin

These particulars, whilst believed to be accurate are set out as a general outline only for guidance and do not constitute any part of an offer or contract. Intending purchasers should not rely on them as statements of representation of fact, but must satisfy themselves by inspection or otherwise as to their accuracy. All measurements quoted are approximate. We are unable to confirm the working order of any fixtures and fittings including appliances that are included in these particulars. No person in this firm's employment has the authority to make or give any representation or warranty in respect of the property.