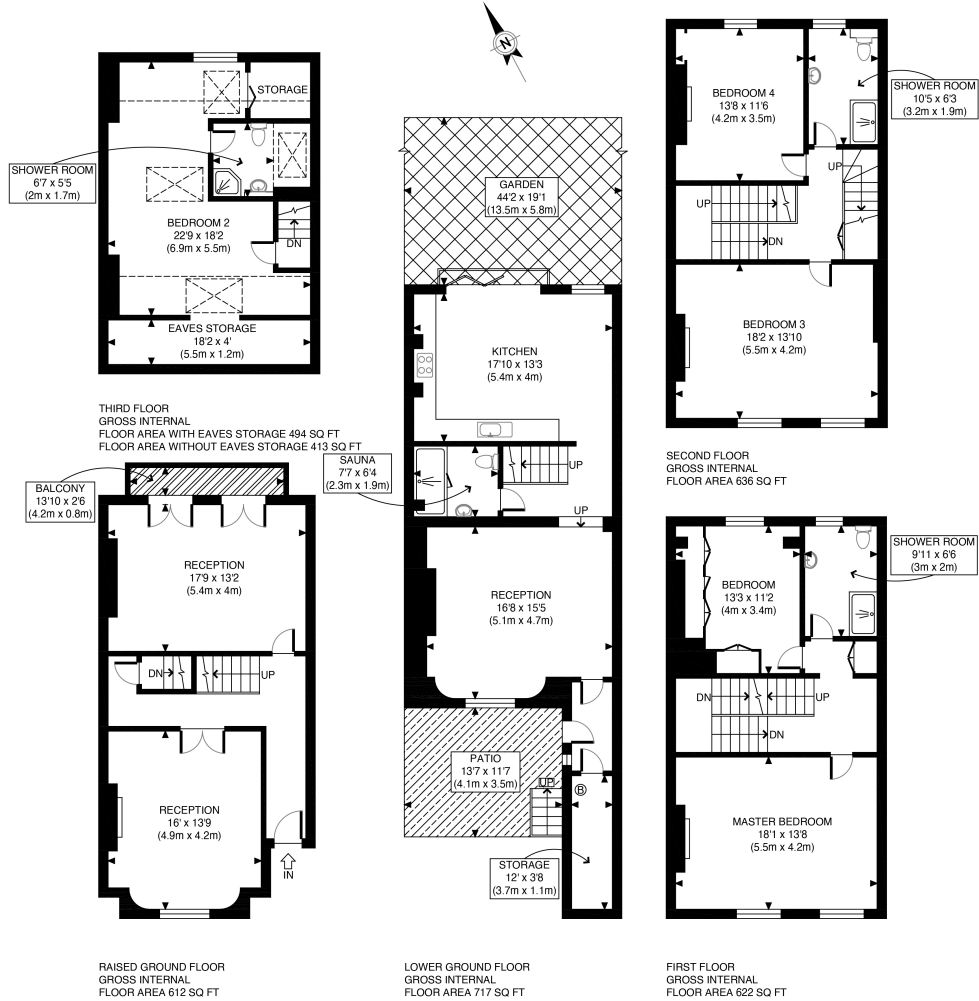




10 Lanhill Road, London, W9 2BP

£2,500 p/w

- Five Bedroom House
- Three Reception Rooms
- Private Garden
- Three Bathrooms
- Sauna
- Available 1st September 2024



APPROX. GROSS INTERNAL FLOOR AREA WITH EAVES STORAGE 3081 SQ FT / 286 SQM	Lanhill Road
APPROX. GROSS INTERNAL FLOOR AREA WITHOUT EAVES STORAGE 3000 SQ FT / 279 SQM	date 27/05/24
Disclaimer: Floor plan measurements are approximate and are for illustrative purposes only.	
While we do not doubt the floor plan accuracy and completeness, you or your advisors should conduct a careful, independent investigation of the property in respect of monetary valuation	
	photoplan

