

FOR SALE

£750,000

Tavistock Avenue, Perivale, Greenford, Greater London. UB6

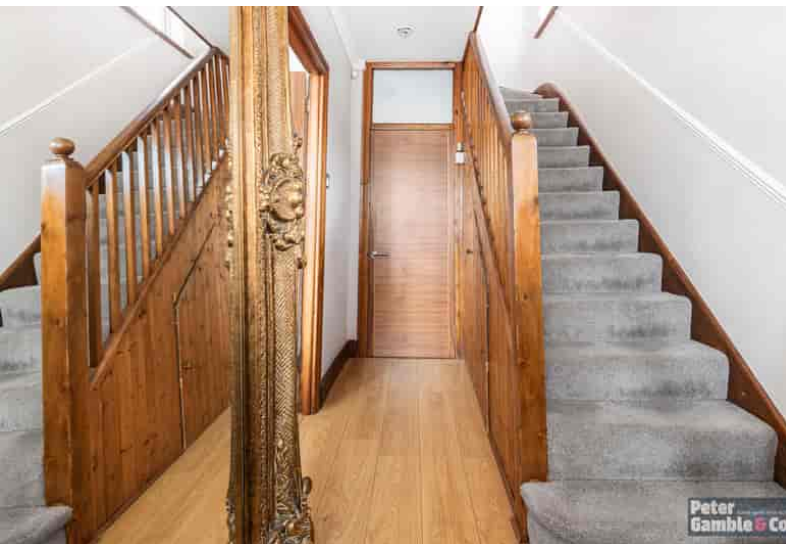


Peter Gamble & Co. offer to the market this superbly presented 4 bedroom 3 bathroom end of terrace home.

This property has been finished to the highest standard throughout, offering a high quality modern finish with a flexible layout.

Situated on this most sought-after crescent the property is just 3 minutes walk to Perivales' central line tube station, whilst also providing quick access to the A40 and the Tesco Hoover building.

To the ground floor the property comprises: large front reception room, ground floor bathroom with





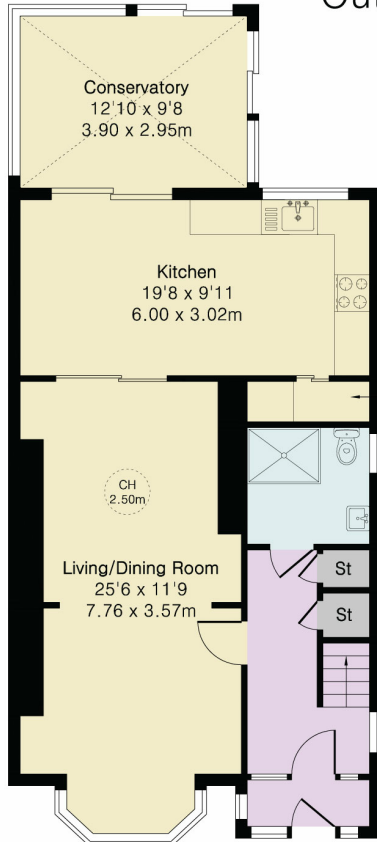
Approximate Gross Internal Area 1721 sq ft - 159 sq m

Ground Floor Area 811 sq ft – 75 sq m

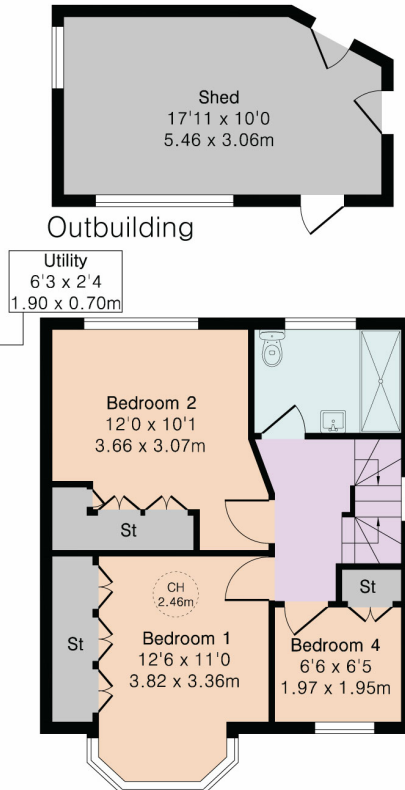
First Floor Area 457 sq ft – 42 sq m

Second Floor Area 281 sq ft – 26 sq m

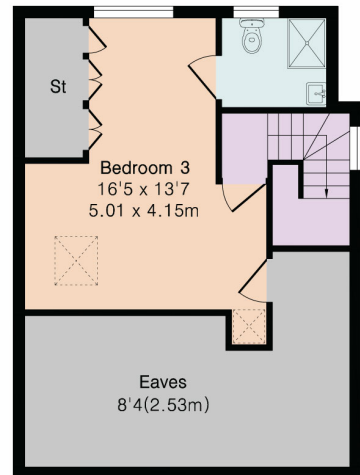
Outbuilding Area 172 sq ft – 16 sq m



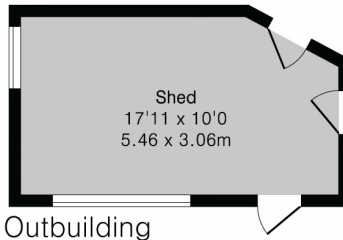
Ground Floor



First Floor



Second Floor



Outbuilding



Although Pink Plan Ltd ensures the highest level of accuracy, measurements of doors, windows and rooms are approximate and no responsibility is taken for error, omission or misstatement. These plans are for representation purposes only as defined by RICS code of measuring practise. No guarantee is given on total square footage of the property within this plan. The figure icon is for initial guidance only and should not be relied on as a basis of valuation.

