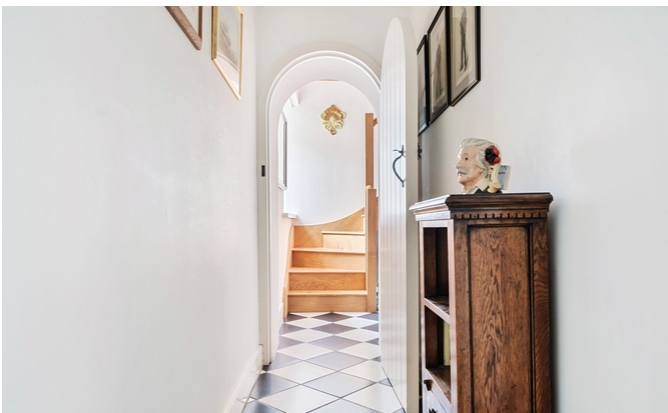


Heytesbury Park

Warminster, BA12 0HG

COOPER
AND
TANNER



£685,000 Freehold

An exceptional Grade II residence located in the former stables of this historic Georgian country home known as 'Heytesbury House'. This was once the home of the late Siegfried Sassoon, who was a First World War poet and biographer. This beautiful conversion offers many period features and throughout. Outside are private tended gardens along with a double garage.

Heytesbury Park

Warminster

BA12 0HG

 4  3  3 EPC D

£685,000 Freehold

DESCRIPTION

This charming home forms part of a very special country house conversion that was completed in 2004. Heytesbury House was once the home of the late Siegfried Sassoon, who was a First World War poet and biographer. This beautiful conversion offers many period features including fire places, stone walls, Oak beams and original wood doors and iron work and latches. This beautiful residence provides a tranquil place to live and also enjoys manicured grounds and its own private gardens. The accommodation in brief comprises a grand entrance dining hall, kitchen / breakfast room with a good range of units and space for appliances, study, dining room with stone walling and arched window, lounge with wood burner and Oak beams, first floor landing, four bedrooms, en-suite, family shower room.

OUTSIDE

Outside you will find tended private lawned gardens with pleasing planting and enclosed with Beech hedging. There is also a double garage that is situated in a block opposite. Heytesbury Park is approached via a long private tree lined driveway.

HISTORY

The history of Heytesbury House is believed to go back some 950 years to William the Conqueror and was once known as East Court. and changed hands to various influential family's over the next few hundred years. The last owner, George Sassoon sold the the estate in 1996 for redevelopment into the current arrangement of apartments and houses you see today. The house is featured in Pevsners Architectural Guide on important buildings of England. Wiltshire edition.

SERVICE CHARGES

Approx. £700pa.

TAX BAND

G





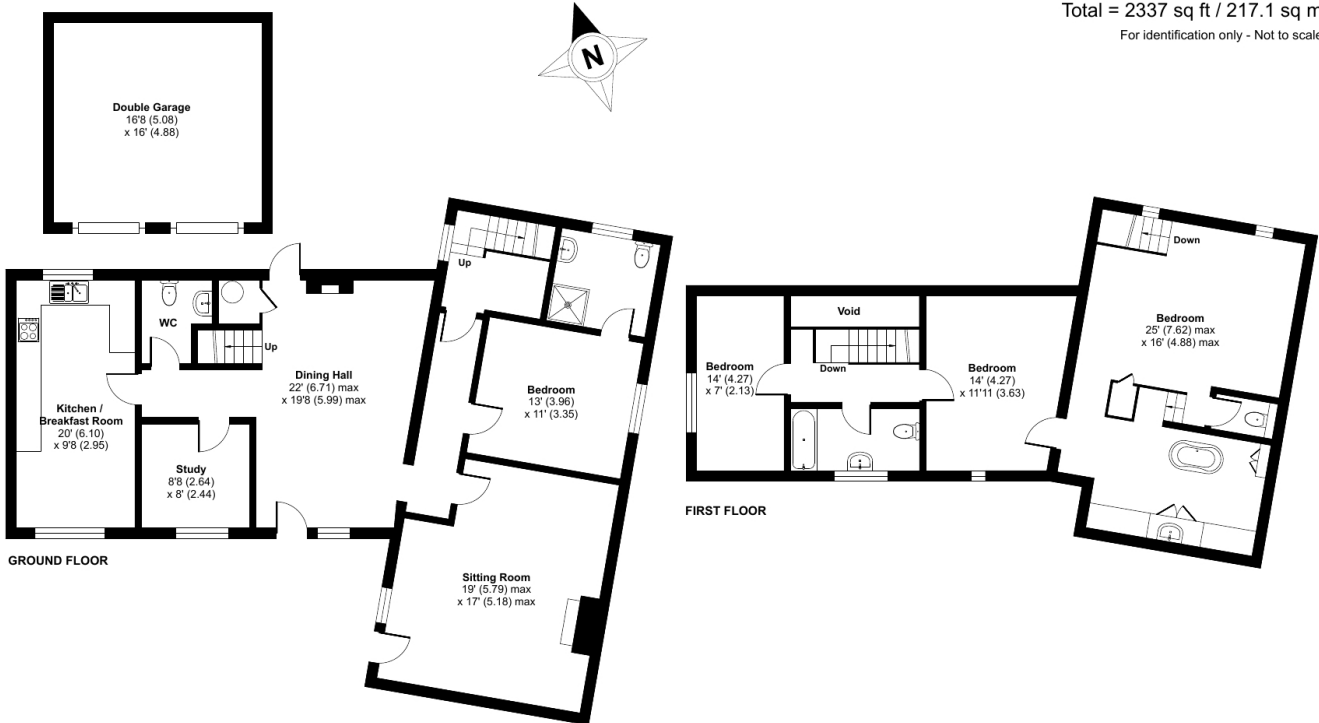
Heytesbury Park, Heytesbury, Warminster, BA12

Approximate Area = 2070 sq ft / 192.3 sq m (excludes void)

Garage = 267 sq ft / 24.8 sq m

Total = 2337 sq ft / 217.1 sq m

For identification only - Not to scale



Floor plan produced in accordance with RICS Property Measurement Standards incorporating International Property Measurement Standards (IPMS2 Residential). © nctechcom 2024. Produced for Cooper and Tanner. REF: 1087321

WARMINSTER OFFICE

Telephone 01985 215579

48-50, Market Place, Warminster, Wiltshire BA12 9AN

warminster@cooperandtanner.co.uk

**COOPER
AND
TANNER**

Important Notice: These particulars are set out as a general outline only for the guidance of intended purchasers and do not constitute, nor constitute part of, an offer or contract. All descriptions, dimensions, reference to condition and necessary permissions for use and occupation, warranties and other details are given without responsibility and any intending purchasers should not rely on the m as statements or representations of fact but must satisfy themselves by inspection or otherwise as to the correctness of each of them.

