

# LEADON BANK

£225,000

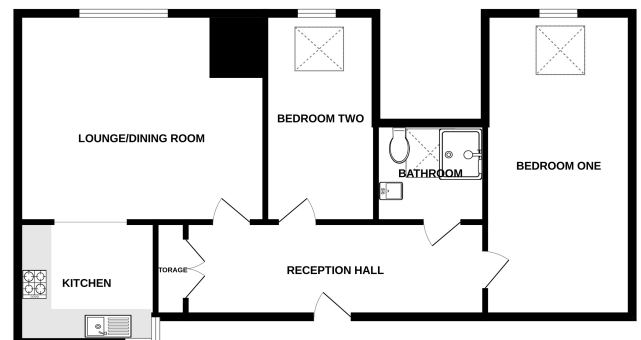


## Key Features

- ✔ Set within easy access to Ledbury town centre.
- ✔ A spacious second floor retirement apartment.
- ✔ Two Bedrooms.
- ✔ Many onsite facilities.



GROUND FLOOR  
798 sq.ft. (74.1 sq.m.) approx.



TOTAL FLOOR AREA: 798 sq.ft. (74.1 sq.m.) approx.  
Made with Merge ©2008