



Altenburg Gardens
Clapham SW11

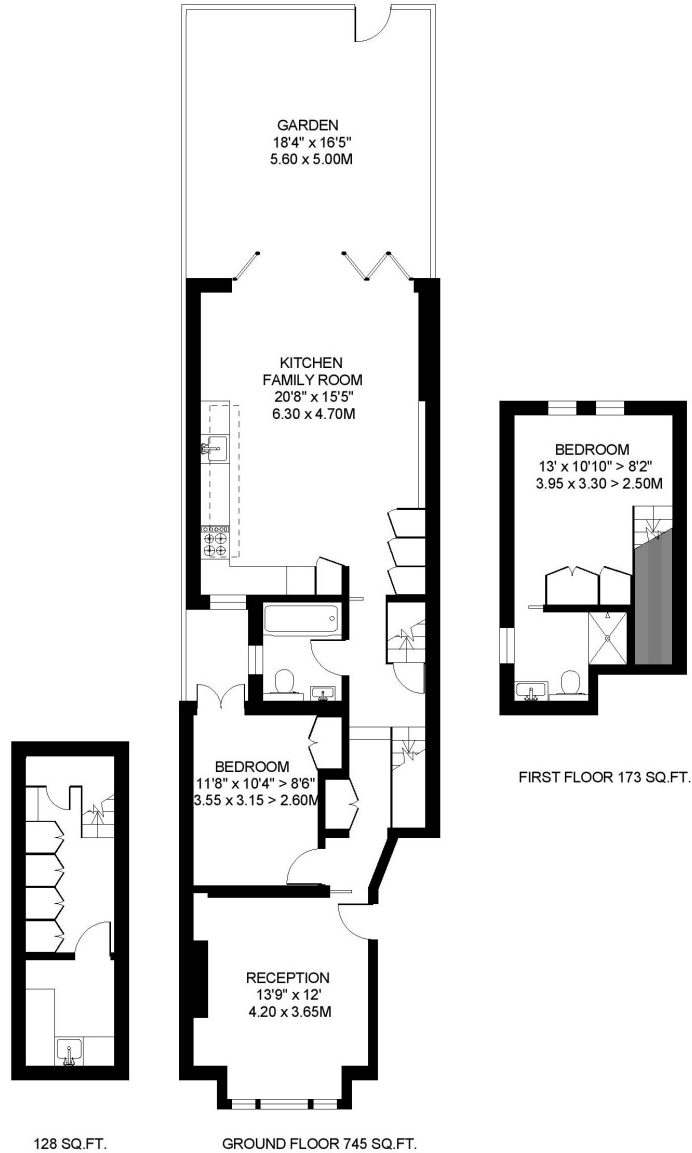
TO LET

This wonderful and spacious split-level garden maisonette (c.1100 sq. ft.) has been beautifully refurbished to an exceptional standard and provides excellent and versatile accommodation with a wealth of living space and a sunny southwest-facing garden with rear access. Situated in one of Battersea's prime streets, close to Northcote Road, directly off Clapham Common North Side and about a quarter mile from Clapham Junction's superb transport links.

ALTENBURG GARDENS
BATTERSEA
LONDON SW11



APPROXIMATE INTERNAL FLOOR (LIVING) AREA
1046 SQ.FT / 97.2 SQ.M.



COPYRIGHT FLOORPLAN PRODUCED FOR
" JOHN THOROGOOD "
BY FLOORPLANNERS 07801 228850



PROPERTY FEATURES

- Rear Access
- Entrance Hall
- SW-facing Garden
- Cellar/Utility Room
- Kitchen/Family Room
- En-suite Shower Room/WC
- Reception Room
- 2 Double Bedrooms
- Bath/Shower Room/WC
- 1046 SQ.FT 97 SQ.M

VIEWING BY APPOINTMENT ONLY

The particulars do not constitute part of an offer or contract: the particulars including text descriptions, photographs and plans are only for the guidance of prospective purchasers and must not be relied on as statements of fact: nothing in the particulars shall be deemed as a statement that the property is in good condition nor that any services or facilities are in good working order: measurements given are approximate: prior to viewing we recommend that you discuss particular points of interest with a staff member to avoid a wasted journey

