



Offers Over £244,000
22 Jennie Lee Road, Cowdenbeath, Fife, KY4 9FB

22 Jennie Lee Road, Cowdenbeath, Fife, KY4 9FB

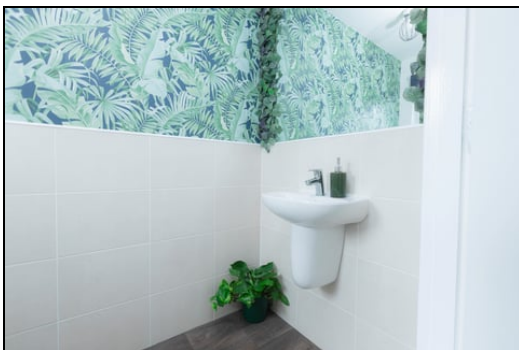
Delmor are delighted to be marketing this well presented detached villa set within a private residential estate close to all local amenities. Cowdenbeath has a great range of amenities including shopping, schooling and leisure facilities. There is a train station and close links to the A92 for the commuter. The property briefly comprises of - Entrance hallway with downstairs WC. Spacious lounge/dining room with stairs leading to the first floor. Ample space for dining table and chairs. French doors leading to the rear gardens. Modern kitchen fitted with floor and wall mounted units incorporating gas hob with electric oven below and overhead extractor fan. Integrated fridge/freezer, washing machine and dishwasher. Storage cupboard. Top hallway. Master bedroom with mirrored fitted wardrobes and ensuite shower room. Two further bedrooms one of which has fitted mirrored wardrobes. Family bathroom. The property also benefits from gas central heating and double glazing. The front gardens are open with drive leading to the garage. The rear gardens are enclosed and all easily maintained with chipped, astro turf and patio areas. Early viewing is highly recommended on this desirable move in condition property.

Ground Floor

Entrance Hallway

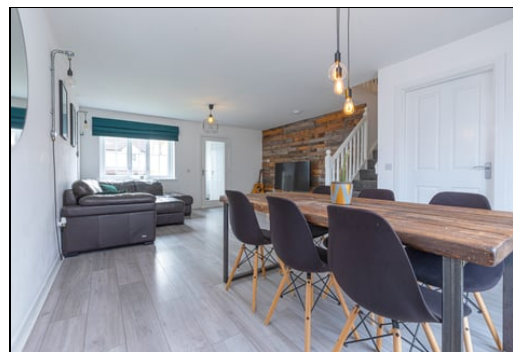


Downstairs WC



0.9m x 1.6m (2' 11" x 5' 3")

Lounge/Dining Room



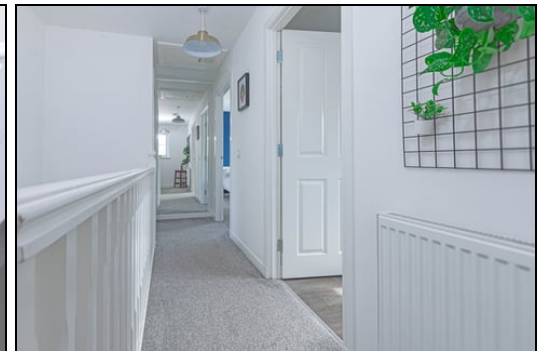
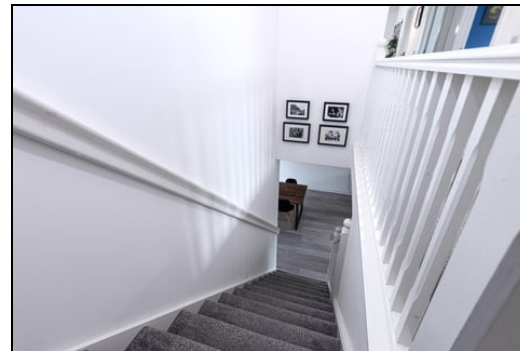
7.9m x 4.1m (25' 11" x 13' 5")



Kitchen



Top Hallway



3.8m x 3.5m (12' 6" x 11' 6")

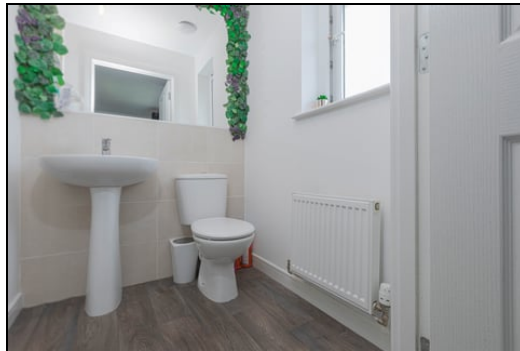
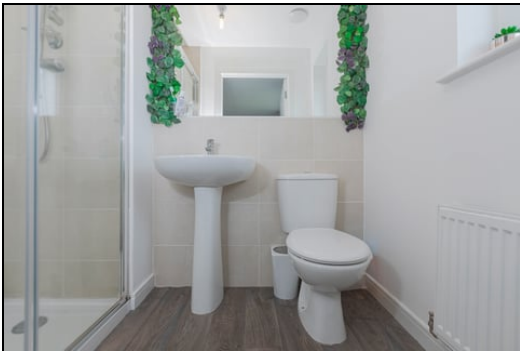
First Floor

Master Bedroom



3.8m x 3.2m (12' 6" x 10' 6")

EnSuite



2.3m x 1.6m (7' 7" x 5' 3")

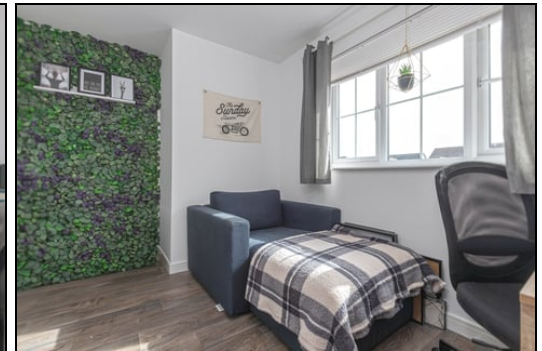
Bedroom



3.3m x 3.1m (10' 10" x 10' 2")



Bedroom



3.0m x 3.2m (9' 10" x 10' 6")



Bathroom



2.6m x 2.0m (8' 6" x 6' 7")

Gardens



Extras

All floor coverings. Gas hob, electric oven and extractor fan. Integrated washing machine, dishwasher and fridge/freezer.



SONIC TAPE

All measurements have been taken using a sonic tape measure and therefore, may be subject to a small margin of error.

MEASUREMENTS

All measurements are approximate.



MORTGAGE & FINANCIAL ADVICE

Qualified Mortgage and Financial Consultants can provide you with up to the minute information on many of the rates available. To arrange an appointment telephone this office. **YOUR HOME IS AT RISK IF YOU DO NOT KEEP UP REPAYMENTS ON A MORTGAGE OR OTHER LOANS SECURED ON IT.** Full written quotation available on request. A suitable life policy may be required. Loans are subject to status. Minimum age 18.

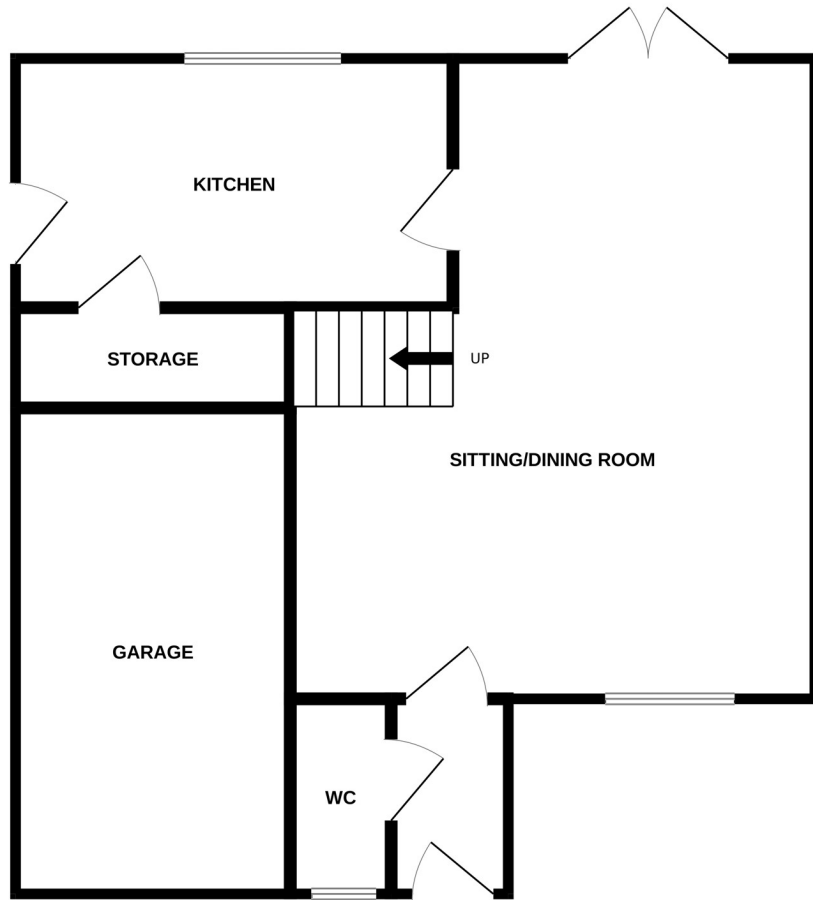
FREE VALUATION

How much is your property worth?. We can provide you with the answer. We offer a free valuation service without cost or obligation. Please call this office for an appointment.

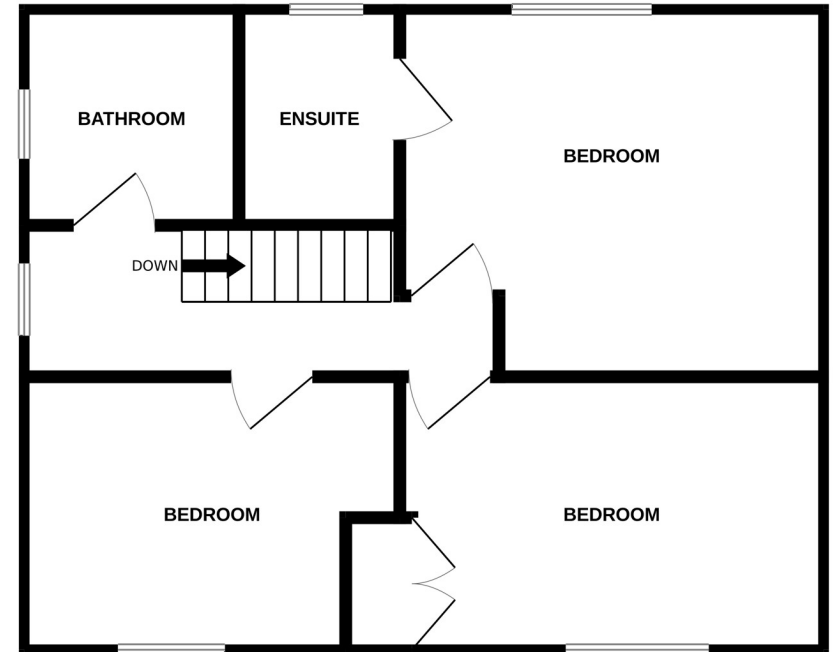
APPLIANCES/SERVICES

The mention of any appliances and/or services within these Sales Particulars does not imply they are in fully working order.

GROUND FLOOR



1ST FLOOR



Whilst every attempt has been made to ensure the accuracy of the floorplan contained here, measurements of doors, windows, rooms and any other items are approximate and no responsibility is taken for any error, omission or mis-statement. This plan is for illustrative purposes only and should be used as such by any prospective purchaser. The services, systems and appliances shown have not been tested and no guarantee as to their operability or efficiency can be given.
Made with Metropix ©2024