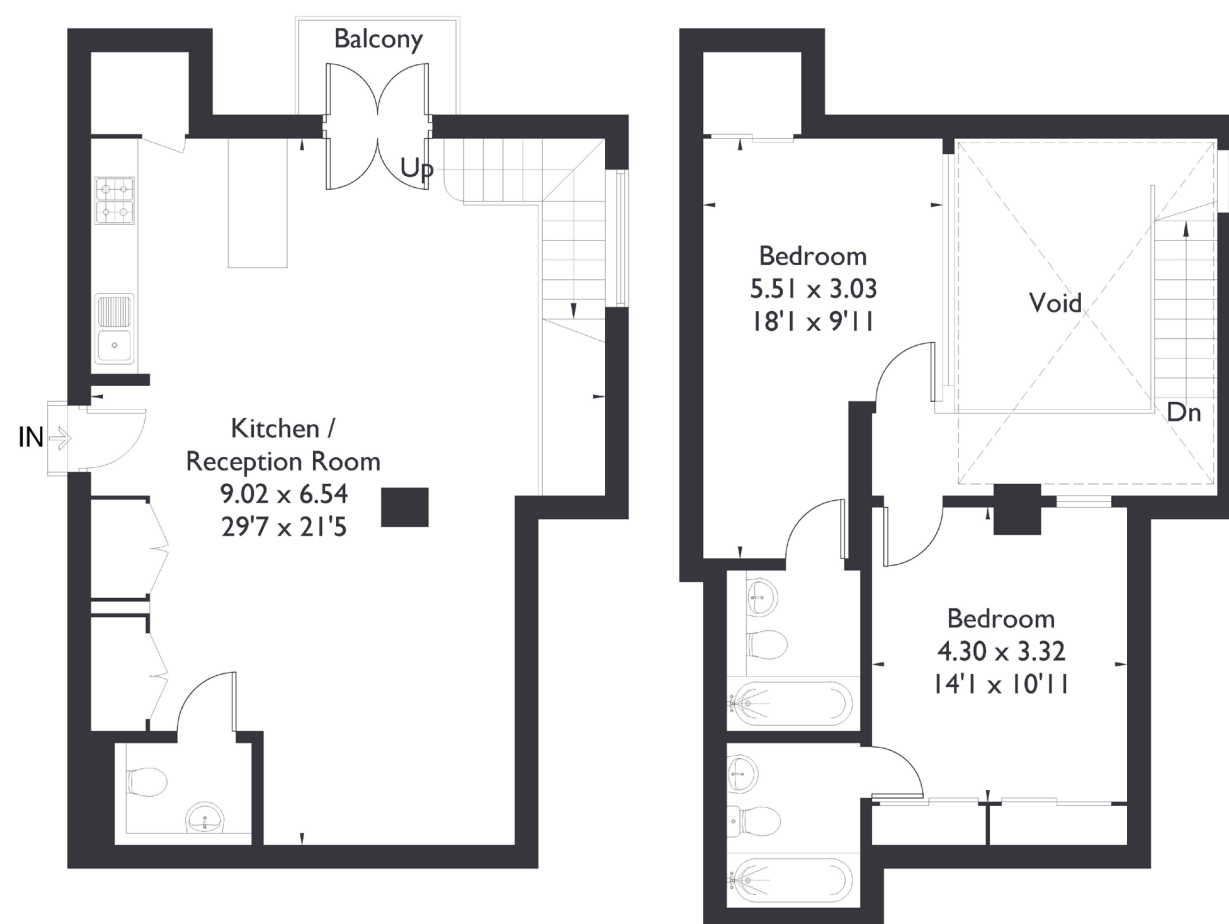


Hoover Buildings

Approximate Floor Area = 103.4 sq m / 1113 sq ft (Excluding Void)



Ground Floor

First Floor



2 BEDROOM FLAT

Hoover Building, UB6 £599,950

Experience the allure of the historic Hoover Building, now transformed into 66 luxurious apartments, seamlessly blending modern elegance with the timeless charm of art deco architecture. Located in Perivale, West London, this Grade II listed national treasure offers unparalleled convenience, mere moments from Perivale station (Central line) and the A40, ensuring swift connections to central London and beyond.

FEATURES

- Two Bedrooms
- Two Bathrooms
- Open Plan Kitchen/Living
- Private Balcony
- Perivale Station (Elizabeth Line)
- Private Parking Available (not included in price of this sale)
- EPC Rating C



2 BEDROOM FLAT

Hoover Building, UB6

£599,950

The allure of this property lies in its captivating modern charm and impeccably clean interior, drawing in prospective residents with its irresistible appeal.

This stunning two-bedroom, 2.5-bathroom duplex apartment spans two floors, boasting skylights, two ensuite bedrooms, a guest toilet, and a private balcony, all designed to evoke the essence of art deco style. Residents enjoy access to internal and external communal spaces, with the option of securing a parking space in the residents' car park (price to be confirmed, not included in the sale price).

Within easy reach of Perivale station, connecting swiftly to Oxford Circus and Westfield shopping centre, this property offers both convenience and luxury living. Nearby attractions include Wembley Stadium/Box Park, Ealing Golf Club, and the vibrant Pitshanger Lane, offering a plethora of bars, restaurants, and cafes for your enjoyment. Indulge in the epitome of modern-day living within the historic splendour of the Hoover Building. Book your viewing 24/7 and immerse yourself in this contemporary masterpiece steeped in rich history.

EPC Rating C.