

17 Printworks Road, Frome, BA11 1GN

COOPER
AND
TANNER



£450,000 Freehold

A beautifully presented three-storey home on the award-winning Old Printworks development, offering three double bedrooms, a bold navy kitchen and a landscaped garden complete with pergola and patio seating – perfect for stylish, low-maintenance living.

17 Printworks Road, Frome, BA11 1GN

 3  1  2 EPC B

£450,000 Freehold

DESCRIPTION

Positioned along a quiet road within the sought-after Old Printworks development, this stylish semi-detached home offers a practical three-storey layout with a warmer, more homely interior. With thoughtful decorative finishes, a bespoke navy kitchen and a beautifully landscaped garden, the property blends modern energy efficiency with inviting character.

The entrance hall provides a welcoming first impression, complete with cloakroom and built-in storage. To the rear, the open-plan sitting and dining room forms the heart of the home, with full-width glazed doors opening directly onto the garden. The kitchen has been designed with a bold navy finish, paired with quartz worktops and integrated Bosch appliances, giving a smart contemporary edge.

The first floor is home to two generous double bedrooms along with a well-appointed bathroom featuring rainfall shower over the bath, tiled walls and chrome fittings. The second floor is entirely given over to the main bedroom suite, offering a peaceful retreat with its own dressing area, a versatile space also used here as an office, and private en suite shower room. Generous windows ensure the space feels bright and airy. This home has been styled with a cosier, more

personal touch, with panelling and painted finishes adding character throughout. Engineered flooring and triple-glazed windows and doors ensure a comfortable and sustainable environment.

The rear garden is a real highlight, designed for both style and low maintenance. A slate shingle pathway leads through a section of lawn to a smart patio and pergola seating area – the perfect spot for entertaining or quiet evenings outdoors. The property also benefits from a large single garage, driveway parking for two vehicles. Residents have access to communal EV charging points and a range of on-site amenities, including a Spar shop.

ADDITIONAL INFORMATION

All mains services connected.

LOCATION

Frome is a historic market town with many notable buildings and features the highest number of listed buildings in Somerset. Frome offers a range of shopping facilities, a sports centre, several cafés, a choice of pubs, local junior, middle and senior schools, several theatres, and a cinema. Bath and Bristol are within commuting distance, and the local railway station connects at Westbury for London Paddington.







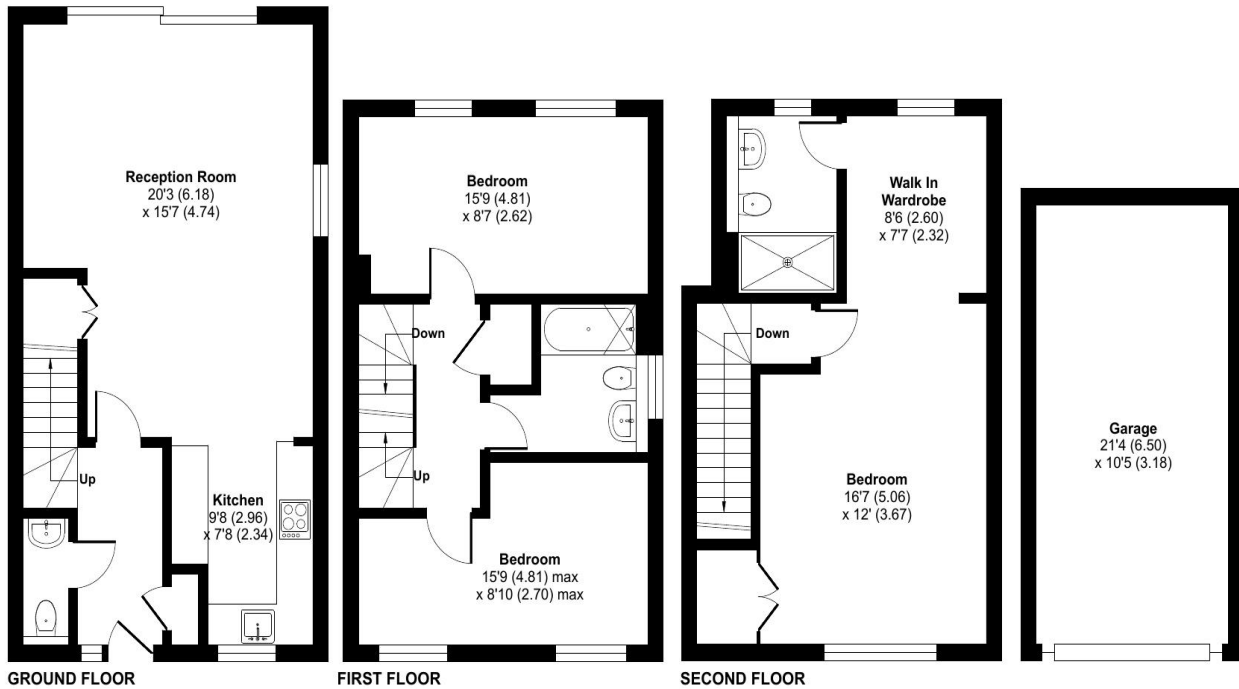
Printworks Road, Frome, BA11

Approximate Area = 1266 sq ft / 117.6 sq m

Garage = 222 sq ft / 20.6 sq m

Total = 1488 sq ft / 138.2 sq m

For identification only - Not to scale



Floor plan produced in accordance with RICS Property Measurement 2nd Edition, Incorporating International Property Measurement Standards (IPMS2 Residential). © nichecom 2025. Produced for Cooper and Tanner. REF: 1345550



FROME OFFICE

Telephone 01373 455060

6 The Bridge, Frome, Somerset, BA11 1AR

frome@cooperandtanner.co.uk

**COOPER
AND
TANNER**

Important Notice: These particulars are set out as a general outline only for the guidance of intended purchasers and do not constitute, nor constitute part of, an offer or contract. All descriptions, dimensions, reference to condition and necessary permissions for use and occupation, warranties and other details are given without responsibility and any intending purchasers should not rely on them as statements or representations of fact but must satisfy themselves by inspection or otherwise as to the correctness of each of them.



RICS



OnTheMarket