



1 The Railway, Henlow, Bedfordshire, SG16 6FN

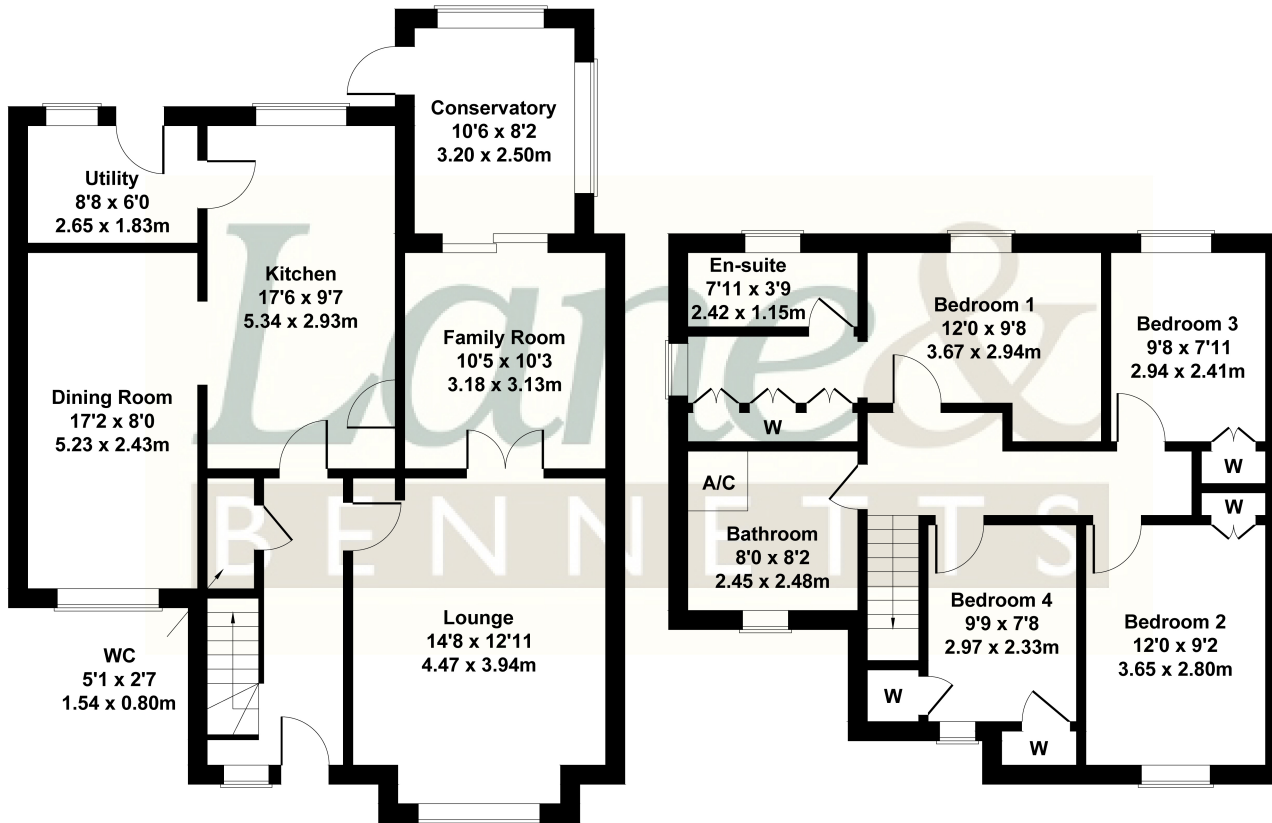
£575,000

DETACHED FAMILY HOME in small courtyard setting. Great accommodation including spacious lounge, family room with conservatory, large re-fitted kitchen/breakfast room with built in appliances and utility room plus an adjoining dining room. Upstairs are four good sized bedrooms all with built in wardrobes and the main bedroom has a dressing area plus en-suite. Outside is a private enclosed rear garden and off-road parking is provided by the driveway.



1 The Railway Lower Stondon Beds SG16 6FN

Approximate Gross Internal Area
1615 sq ft - 150 sq m



Not to Scale. Produced by The Plan Portal 2024
For Illustrative Purposes Only.

- DETACHED FAMILY HOME
- COURTYARD SETTING
- THREE RECEPTION ROOMS + CONSERVATORY
- KITCHEN/BREAKFAST ROOM WITH BUILT IN APPLIANCES + UTILITY
- FOUR GOOD SIZED BEDROOMS ALL WITH BUILT IN WARDROBES
- BEDROOM 1 WITH DRESSING AREA + EN-SUITE
- ENCLOSED REAR GARDEN
- DRIVEWAY PROVIDING OFF ROAD PARKING

